



MONARCH™ 60" x 31" INTEGRAL APRON BATHING POOL

HIGH GLOSS ACRYLIC

MONARCH 60" x 31" INTEGRAL APRON BATHING POOL

- ☐ 1713 102 Bath only, Right Hand Outlet
- ☐ 1713 202 Bath only, Left Hand Outlet (Illustrated)

Product Features:

- High Gloss Acrylic with fiberglass reinforcement
- Integral apron with removable access panel
- Integral three-sided, double tiling/water retention flange
- Safety-textured tub bottom pattern
- Dual accessory deck area



Actual Dimensions:

1524 x 857 x 533mm
(60" x 33-3/4" x 21")

To Be Specified - Required:

- ☐ Colour: (specify colour)
- ☐ Bath Faucet* (specify finish)
- ☐ Universal Drain: 1583 470 (specify finish)

* See faucet section for models available

Compliance Certifications -

Meets or Exceeds the Following Specifications:

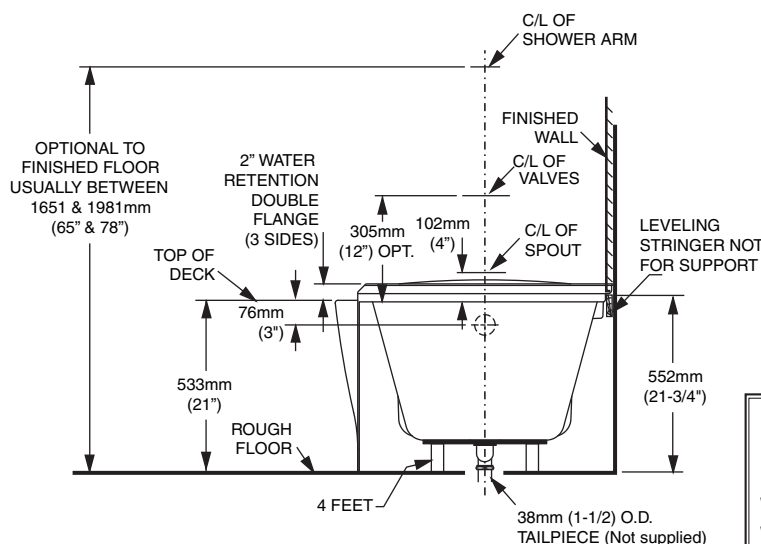
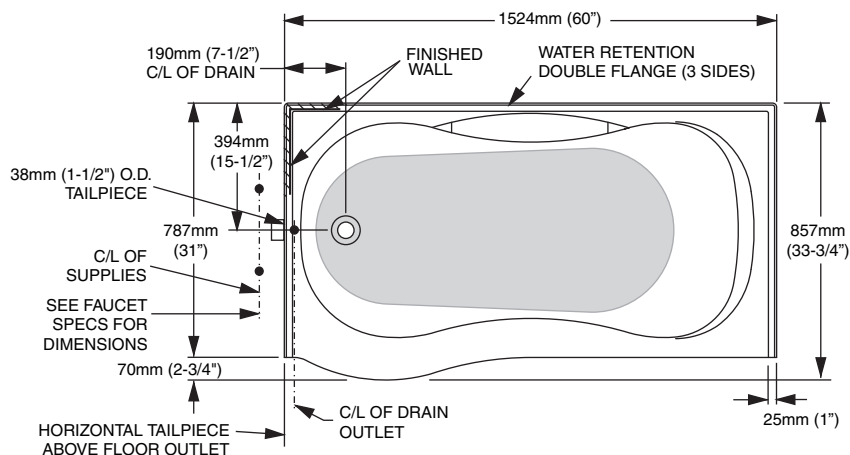
- CAN/CSA B45 Series
- CAN/ULC-S102 Flame Spread and Smoke Developed

NOTE: Roughing-in dimensions and product specifications shown on reverse side of page.

American Standard

MONARCH™ 60" x 31" INTEGRAL APRON BATHING POOL

HIGH GLOSS ACRYLIC



GENERAL SPECIFICATIONS FOR 1713 202 BATHING POOL

INSTALLED SIZE	1524 x 787 x 533 mm (60 x 31 x 21 In.)
WEIGHT	56 Lbs. (25 Kg.)
WEIGHT w/WATER	483 Lbs. (219 Kg.)
GALLONS TO OVERFLOW	51 Gal. (232 L.)
BATHING WELL AT SUMP	1105 x 483 mm (43-1/2 x 19 In.)
BATHING WELL AT RIM	1372 x 546 mm (54 x 21-1/2 In.)
WATER DEPTH TO OVERFLOW	324 mm (12-3/4 In.)
FLOOR LOADING	37 Lbs./Sq.Ft. (182 Kg./Sq. m)
(PROJECTED AREA)	
PTS.	16.7
CUBE (Ft ³)	33

* ALL DIMENSIONS MAY VARY $\pm 1/4"$ (6mm)

NOTES:

BATH CAN BE INSTALLED ABOVE FLOOR LINE AS A RECESS INSTALLATION.

LEFT HAND OUTLET SHOWN, RIGHT HAND REVERSE DIMENSIONS. (1713 102). SHOWN WITH DRAIN AND OVERFLOW.

REFER TO INSTALLATION INSTRUCTIONS SUPPLIED WITH FAUCET FOR ADDITIONAL INFORMATION.

FAUCETS NOT INCLUDED AND MUST BE ORDERED SEPARATELY.

PROVIDE SUITABLE REINFORCEMENT FOR ALL SUPPORTS.

CONCEALED PIPING NOT INCLUDED.

IMPORTANT:

Dimensions of fixtures are nominal and may vary within the range of tolerances established by ANSI Standard Z124.1

These measurements are subject to change or cancellation. No responsibility is assumed for use of superseded or voided leaflet.