

# HTLHD SERIES TAPE LIGHT

## 24V DC High Output (HD) High Density

High Density (HD) tape light features highly efficient and compact LED chip sets that allow for tighter spacing without sacrificing lumen loss and more precise cutting increments for greater customization with run lengths up to 27 feet.

- High Density (HD) LED spacing in High Output performance
- Available in 2700K, 3000K, 3500K, 4000K, and 5000K
- 90+ color rendering index
- Lumen output ranging from 310Lm to 385Lm per foot
- Cuttable every 1.51" with 27ft max run
- Easy installation featuring 3M VHB adhesive backing
- Available in IP54 coated and IP65 Jacketed
- Dimmable (5-100%) with most ELV, TRIAC dimmers
- cULus Listed for indoor dry/damp locations
- 50,000 hours rated life
- Suitable for use in closets when used in an enclosed extrusion based on NFPA 70, NEC section 410.16 (A)(3) and 410.16 (C)(5)



PROJECT: \_\_\_\_\_

TYPE: \_\_\_\_\_

LOCATION: \_\_\_\_\_

CATALOG NUMBER: \_\_\_\_\_



HTLHD SERIES QUICK SPECS	
VOLTAGE	24V
WATTAGE	3.65W / ft
LUMENS	Up to 385Lm / ft
CCT OPTIONS	2700K / 3000K / 3500K / 4000K / 5000K
CRI	90+
MAX RUN	27ft
CUTTING POINTS	1.51" (38.4mm)
IP RATING	IP54 - Coated
DIMMING	TRIAC / ELV (5-100%)
DIMENSIONS	0.39" (10mm) W x 0.06" (1.65mm) H
BEAM ANGLE	120°
OPERATING TEMP	5°C (41°F) to 70°C (158°F)
CERTIFICATIONS	cULus Listed - Dry / Damp Location
RATED LIFE	50,000 Hours

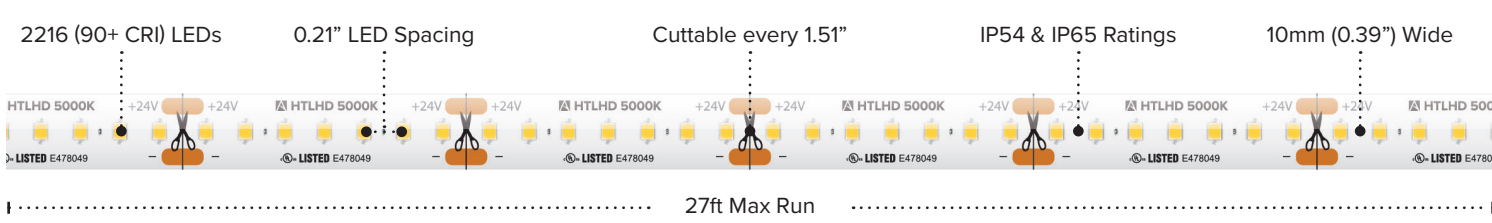
### HTLHD SERIES IP RATINGS

**IP54 (Coated)**  
 Features a light nano-coating applied to the tape light and LED's that protects from moisture and dust.  
**Best suited:** Indoor dry & damp locations

**IP65 (Jacketed)\***  
 Features a clear protective silicone jacketing that protects the tape light from sprayed water and dust.  
**Best suited:** Indoor & Outdoor damp & wet locations

\*Not suitable for exposure to chemicals or salt.

### HTLHD SERIES QUICK LOOK



**HTLHD SERIES ORDERING INFORMATION** \*Custom Cut Orders - Please Allow Up To 2-4 Weeks Order Processing & Delivery\*

ITEM NUMBER	VOLTAGE	CCT	LENGTH	LUMENS / FT	WATTAGE / FT	IP RATING	CRI	CUTTING	MAX RUN
HTLHD-UWW-16	24V	2700K	16.4 ft	310Lm / ft	3.65W / ft	IP54	90+	1.51" (38.4mm)	27 ft
HTLHD65-UWW-16	24V	2700K	16.4 ft	295Lm / ft	3.65W / ft	IP65	90+	1.51" (38.4mm)	27 ft
HTLHD-UWW-100	24V	2700K	100 ft	310Lm / ft	3.65W / ft	IP54	90+	1.51" (38.4mm)	27 ft
HTLHD-UWW-CC	24V	2700K	Custom Cut*	310Lm / ft	3.65W / ft	IP54	90+	1.51" (38.4mm)	27 ft
HTLHD65-UWW-CC	24V	2700K	Custom Cut*	295Lm / ft	3.65W / ft	IP65	90+	1.51" (38.4mm)	27 ft
HTLHD-WW-16	24V	3000K	16.4 ft	335Lm / ft	3.65W / ft	IP54	90+	1.51" (38.4mm)	27 ft
HTLHD65-WW-16	24V	3000K	16.4 ft	320Lm / ft	3.65W / ft	IP65	90+	1.51" (38.4mm)	27 ft
HTLHD-WW-100	24V	3000K	100 ft	335Lm / ft	3.65W / ft	IP54	90+	1.51" (38.4mm)	27 ft
HTLHD-WW-CC	24V	3000K	Custom Cut*	335Lm / ft	3.65W / ft	IP54	90+	1.51" (38.4mm)	27 ft
HTLHD65-WW-CC	24V	3000K	Custom Cut*	320Lm / ft	3.65W / ft	IP65	90+	1.51" (38.4mm)	27 ft
HTLHD-NW-16	24V	3500K	16.4 ft	355Lm / ft	3.65W / ft	IP54	90+	1.51" (38.4mm)	27 ft
HTLHD65-NW-16	24V	3500K	16.4 ft	335Lm / ft	3.65W / ft	IP65	90+	1.51" (38.4mm)	27 ft
HTLHD-NW-100	24V	3500K	100 ft	355Lm / ft	3.65W / ft	IP54	90+	1.51" (38.4mm)	27 ft
HTLHD-NW-CC	24V	3500K	Custom Cut*	355Lm / ft	3.65W / ft	IP54	90+	1.51" (38.4mm)	27 ft
HTLHD65-NW-CC	24V	3500K	Custom Cut*	335Lm / ft	3.65W / ft	IP65	90+	1.51" (38.4mm)	27 ft
HTLHD-WH-16	24V	4000K	16.4 ft	385Lm / ft	3.65W / ft	IP54	90+	1.51" (38.4mm)	27 ft
HTLHD65-WH-16	24V	4000K	16.4 ft	365Lm / ft	3.65W / ft	IP65	90+	1.51" (38.4mm)	27 ft
HTLHD-WH-100	24V	4000K	100 ft	385Lm / ft	3.65W / ft	IP54	90+	1.51" (38.4mm)	27 ft
HTLHD-WH-CC	24V	4000K	Custom Cut*	385Lm / ft	3.65W / ft	IP54	90+	1.51" (38.4mm)	27 ft
HTLHD65-WH-CC	24V	4000K	Custom Cut*	365Lm / ft	3.65W / ft	IP65	90+	1.51" (38.4mm)	27 ft
HTLHD-CW-16	24V	5000K	16.4 ft	370Lm / ft	3.65W / ft	IP54	90+	1.51" (38.4mm)	27 ft
HTLHD65-CW-16	24V	5000K	16.4 ft	350Lm / ft	3.65W / ft	IP65	90+	1.51" (38.4mm)	27 ft
HTLHD-CW-100	24V	5000K	100 ft	370Lm / ft	3.65W / ft	IP54	90+	1.51" (38.4mm)	27 ft
HTLHD-CW-CC	24V	5000K	Custom Cut*	370Lm / ft	3.65W / ft	IP54	90+	1.51" (38.4mm)	27 ft
HTLHD65-CW-CC	24V	5000K	Custom Cut*	350Lm / ft	3.65W / ft	IP65	90+	1.51" (38.4mm)	27 ft

**16.4ft Reels (IP54) Include:** Attached 3ft Lead Wire / (3) TL-CONKIT / (3) TL-BLKS / (3) TL-2PWR-HD  
**16.4ft Reels (IP65) Include:** Attached 3ft IP65 Lead Wire Connection / (3) HD Power Feeds (IP20)  
**100ft Reels (IP54) Include:** Attached 3ft Lead Wire / (5) TL-CONKIT / (5) TL-BLKS / (5) TL-2PWR-HD  
**Custom Cut:** Order (1) **CONKIT-CC** Assembly Fee per length of tape; includes 3ft soldered lead wire and shrink tube cover; for additional wire, add (1) TL-WIRE per ft; IP65 includes 2ft IP65 Lead Wire +6" Conkit (no additional wire available for IP65 cuts)

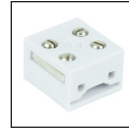
\*Custom Cut Lengths must be calculated in 1.51" increments (Min 1ft / Max. 27ft). See page 3 for cut increment guide.

**HTLHD SERIES ACCESSORIES**

ITEM NUMBER	DESCRIPTION
<b>TL-CONKIT</b>	6' Trulink 4-in-1 Connection Kit
<b>TL-BLKS</b>	Trulink 4-in-1 Connector Block (QTY 10)
<b>TL-2PWR-HD</b>	6' HD Power Feed (IP54)
<b>TL-2JUMP6-HD</b>	6" HD Linking Cable
<b>TL-2JUMP24-HD</b>	24" HD Linking Cable
<b>TL-2SPL-HD</b>	HD Tape to Tape Splice Connector
<b>TL-2SPL-L-HD</b>	90° "L" HD Tape to Tape Splice Connector (IP54)
<b>WIRE-15-2PIN</b>	15ft (20/2) Wire Spool
<b>WIRE-CMP-100-3PIN</b>	100ft (16/3) In-wall Rated Wire Spool
<b>INLINE-SC-CTRL</b>	Simple Select In-line Controller (Single Color)
<b>LVSB-2PIN</b>	In-Line Splice Terminal Block
<b>RCWY-PVC-1M</b>	1m Plastic Wire Cover Raceway (White)



**TL-CONKIT**



**TL-BLKS**



**TL-2PWR-HD**



**TL-2JUMP6-HD  
TL-2JUMP24-HD**



**TL-2SPL-HD**



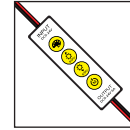
**TL-2SPL-L-HD**



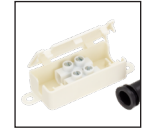
**WIRE-15-2PIN**



**WIRE-CMP-100-3PIN**



**INLINE-SC-CTRL**



**LVSB-2PIN**



**RCWY-PVC-1M**

**RECOMMENDED POWER SUPPLIES** \*Phase Dimming Compatible With Most MLV, ELV, and TRIAC Dimmers\*

ITEM NUMBER	DESCRIPTION	MAX / MIN LOAD	INPUT VOLTAGE	OUTPUT VOLTAGE	DIMMABLE	DIMENSIONS
<b>PZM-ADPT-DRJ-30-24</b>	Adaptive Series 30W	30W / 3W	100-277V AC	24V	Yes*	6.49"L x 3.6"W x 1.02"H
<b>PZM-ADPT-DRJ-60-24</b>	Adaptive Series 60W	60W / 6W	100-277V AC	24V	Yes*	7.4"L x 3.6"W x 1.02"H
<b>PZM-ADPT-DRJ-96-24</b>	Adaptive Series 96W	96W / 9.6W	100-277V AC	24V	Yes*	8.66"L x 3.6"W x 1.61"H
<b>PZM-ADPT-DRJ-192-24</b>	Adaptive Series 192W (2 x 96W)	192W / 19.2W	100-277V AC	24V	Yes*	10.94"L x 4.25"W x 1.8"H
<b>PZM-ADPT-DRJ-288-24</b>	Adaptive Series 288W (3 x 96W)	288W / 28.8W	100-277V AC	24V	Yes*	11.85"L x 4.25"W x 1.8"H





# AMERICAN LIGHTING WARRANTY

## LIMITED WARRANTY FOR LED PRODUCTS: 5 YEARS

### LIMITED PRODUCT WARRANTY

Our products are warranted to be free from defects in material and workmanship for the warranty period listed. Warranty periods begin from the date of shipment from American Lighting Inc's warehouse to the original purchaser. Products that prove to be defective during their specific warranty period will be either repaired or replaced, at the sole discretion of American Lighting Inc. Claims for defective products must be submitted in writing to American Lighting Inc's RGA Department within the warranty period. Upon approval of such return, American Lighting Inc reserves the right to inspect the product for misuse or abuse. Claims for indirect or consequential damages or for product that, in American Lighting Inc's opinion, has been misused will be denied. This is a warranty of product reliability only and not a warranty of merchantability or fitness for a particular purpose. American Lighting Inc shall have no liability whatsoever in any event for payment of incidental or consequential damages, including, without limitations, installation costs and/or damages for personal injury and/or property. These products may represent a possible shock or fire hazard if improperly installed or altered in any way. This warranty does not apply to any product that has not been properly installed in accordance with current local codes and/or the National Electrical Code. Products that require a transformer, driver, or power supply must be used in conjunction with American Lighting Inc's recommended power supply to ensure safety and retain product warranty.

### PRODUCT SPECIFICATIONS

For the latest product information, updates, instructions and details concerning specifications, colors, finishes, performance, installation and design, visit [www.americanlighting.com](http://www.americanlighting.com). Color may vary from the color printed herein due to limitations in photographic and printing processes. American Lighting Inc. reserves the right to change product specifications without notice. Other product specifications such as color temperature, wavelength characteristics and lumen output are subject to production limitations and may vary.

LED technology is changing rapidly, and not all color temperatures and performance levels can be duplicated at a later time. Best practices include purchasing 10-15% more for a particular project on the same initial order where white LED color temperatures must be maintained over project and product life. Eventual product replacement should be considered at layout and design stages. Best practices also include testing connections and product performance prior to mounting and/or installing.

### AVERAGE LIFE

Average incandescent lamp life, rated life and average life are terms used to describe the number of hours at which half of the lamps have failed. For LEDs, the hours of rated life specify the point where 70% of original lumen output is reached. Below this point, the effective life is over, however, the LED may still emit light. Individual results may vary with actual environmental conditions including, but not limited to, proper installation, ambient temperature and/or input voltage fluctuations.