



INSTALLATION INSTRUCTIONS

SPKPL-OUTLETW-2S-WH

**⚠ WARNING**

These products may represent a possible shock or fire hazard if improperly installed or attached in any way. Products should be installed in accordance with these instructions, current electrical codes, and/or the current National Electric Code (NEC).

⚠ WARNING

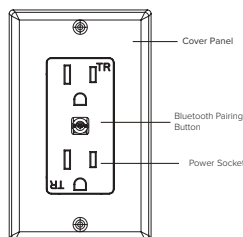
Do not exceed maximum recommended loads! 10A total.

⚠ WARNING: RISK OF ELECTRIC SHOCK

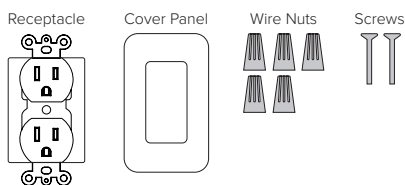
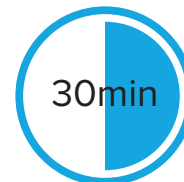
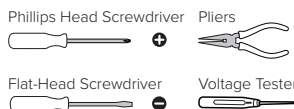
Electricity can cause personal injury and property damage if handled improperly. If you are not sure about any part of these instructions, please seek professional assistance from a qualified electrician. Ensure all work meets applicable local and national codes.

SAFETY INFORMATION

- Read all installation instructions before beginning; if not qualified, do not attempt installation. Contact a qualified electrician.
- To reduce the risk of fire, electric shock, or injury to persons, pay close attention to this manual and stay within its guidelines when using this product. Save these instructions for future use.
- This product is suitable for indoor use in dry locations only.
- Do not submerge in liquids nor use the product in the vicinity of standing water or other liquids, or where water can accumulate.
- Do not use if there is any damage to the product; inspect periodically.
- Do not install in tanks or enclosures of any kinds.
- This product utilizes Bluetooth® 2.4Ghz wireless technology.
- The rated input power for this unit is 100-120V AC 60Hz.
- The maximum rated current for this unit is 10A.
- The standby power consumption of this unit is ≤0.5W.
- This unit is not intended to be used in conjunction with a any dimmer.



Light Color	Light Status	Switch Status	Remarks
Blue	ON	Power ON(Default)	
	OFF	Power OFF(Default)	
	Blink Quickly (0.5s)	Ready for easy configuration mode	
	Blink Slowly (1s)	Ready for AP (Access Point) configuration mode	

CONTENTS:**CONSIDERATIONS:****Tools Needed:**

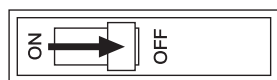
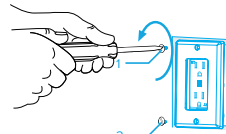
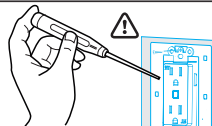
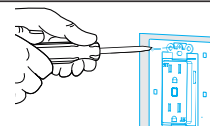
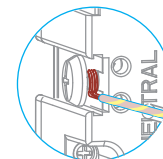
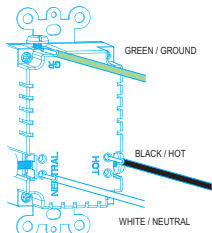
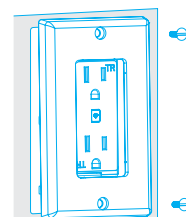
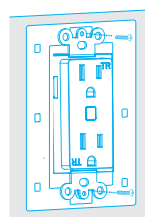
Approximately
30 minutes to install
and setup receptacle

INSTALLATION:

Disconnect power from source prior to attempting installation.

Make all connections and mount in place prior to providing power to system. This product is designed to be installed in a single gang junction box.

1. Locate the circuit breaker panel and turn off the power to each switch being replaced/installed. More than one circuit breaker may need to be turned off. See Figure 1.
2. Remove the existing faceplate by unscrewing the mounting screws and pull it away from the wall. See Figure 2.
3. Verify power is off. Once the faceplate is removed from the existing receptacle, use an electrical voltage tester to test all wires connected to the switch to ensure there is no voltage in the circuit. See Figure 3.
4. Unscrew the mounting screws from the junction box and pull out the existing receptacle. See Figure 4.
5. Connect Smart Receptacle to wires from home wiring. Note which wire goes to which terminal (Green/Ground, White/Neutral, Black/Hot) See Figure 5.
- Note: The color of your wire may be different from the color shown in Figures.
6. Use two long screws to connect Smart Receptacle to junction box. See Figure 6.
7. Use two short screws to connect faceplate to Smart Receptacle. See figure 6.
8. To set up device once installed, press the bluetooth connectivity button in the middle of the receptacle for 8 seconds. A blinking light will indicate the device is in pairing mode.
9. Open the Spektrum+ Smart App and click the "+" button to add a device.
10. Add the Smart Plug device from the auto-add menu. If the device does not show up automatically, use the "add manually" option to add the device manually.
11. Follow the pairing instructions on screen.
12. Once device is paired, utilize the Spektrum+ App to configure settings for device.

FIGURE 1**FIGURE 2****FIGURE 3****FIGURE 4****FIGURE 5****FIGURE 6**



INSTALLATION INSTRUCTIONS

SPKPL-OUTLETW-2S-WH



CONTROLLING THE SMART SWITCH: The Spektrum+ smart power receptacle utilizes Bluetooth Wireless Technology and can be controlled via the Spektrum+ Smart Lighting App. It is not intended to be used in conjunction with any dimmer.

DISTANCE OF REMOTE CONTROL CAPABILITY: 25 meters (approx. 80ft)

RESET THE DEVICE: For Easy Mode reset, press the bluetooth pairing button in the middle of the receptacle 3 times. A fast blinking light indicates easy mode. For AP Mode reset, press the bluetooth pairing button in the middle of the receptacle 3 additional times. A slow blinking light indicates AP Mode.

USING THE SPEKTRUM+ SMART LIGHTING APP: Please follow the Spektrum+ Smart Lighting App guide.

FCC Compliance Statement

This device complies with part 15 of the FCC Rules. Operation is subject to the following two conditions:

1. This device may not cause harmful interference, and
2. This device must accept any interference received, including interference that may cause undesired operation.

FCC WARNING

This equipment has been tested and found to comply with the limits for a Class B digital device, pursuant to Part 15 of the FCC Rules. These limits are designed to provide reasonable protection against harmful interference in a residential installation. This equipment generates, uses and can radiate radio frequency energy and, if not installed and used in accordance with the instructions, may cause harmful interference to radio communications. However, there is no guarantee that interference will not occur in a particular installation. If this equipment does cause harmful interference to radio or television reception, which can be determined by turning the equipment off and on, the user is encouraged to try to correct the interference by one or more of the following measures:

- Reorient or relocate the receiving antenna.
- Increase the separation between the equipment and the receiver.
- Connect the equipment into an outlet different from that to which the receiver is connected.
- Consult the dealer or an experienced radio/TV technician for help.

Changes or modifications not expressly approved by the party responsible for compliance could void the user's authority to operate the equipment.

FCC Radiation Exposure Statement

This equipment complies with FCC radiation exposure limits set forth for an uncontrolled environment. This equipment should be installed and operated with minimum distance 20cm between the radiator and your body.