



Features

- Excellent color rendering (90+ CRI)
- Color temperatures from 2700K to 5000K
- 310-385 lumens per foot performance
- Consumes only 3.65 watts per foot
- Dimmable with ELV dimmers
- Cuttable every 1.51 inches
- 27 foot max run
- (IP54) unjacketed
- 50,000 hours rated life

Available CCT



Control Options

- Trulux Single Color Controls
Requires Adaptive Driver + Trulux Receiver
- Primary Side Dimming
Requires Standard Dimmer + Adaptive Driver
- Single Color In-line Controller

Listing / Ratings

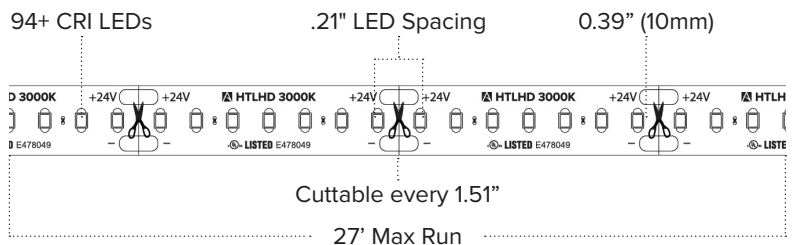


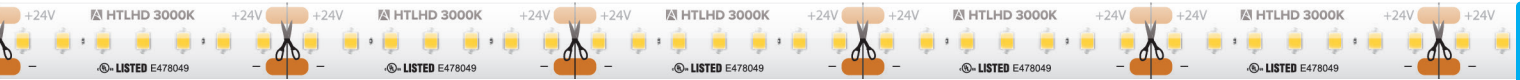
TRULUX™ High Output HD - 24V

High Output HD tape light utilizes a powerful new type of LED to achieve substantially more lumens per foot while using less watts per foot than our original High Output tape light. Tightly spaced LEDs also allow High Output HD tape light to be cut every 1.51 inches – making for an ideal fit in any application.

Technical Information

| | |
|---------------|---------------------------------------|
| Series | HTLHD |
| Input Voltage | 24V |
| CCT | 2700K / 3000K / 3500K / 4000K / 5000K |
| CRI | 90+ |
| Wattage | 3.65W per ft |
| Lumens | Up to 385Lm per ft |
| Max Run | 27 ft |
| Cuttable | Every 1.51 in |
| IP Rating | IP54 (unjacketed) |
| Dimmable | 5-100% |
| Rating | cULus Listed |
| Rated Life | 50,000 hrs |





HTLHD SERIES ORDERING INFORMATION

Custom Cut Orders - Please Allow Up To 2-4 Weeks Order Processing & Delivery

| ITEM NUMBER | VOLTAGE | CCT | LENGTH | LUMENS / FT | WATTAGE / FT | IP RATING | CRI | CUTTING |
|---------------|---------|-------|------------|-------------|--------------|-----------|-----|----------------|
| HTLHD-UWW-16 | 24V | 2700K | 16.4 ft | 310Lm / ft | 3.65W / ft | IP54 | 90+ | 1.51" (38.4mm) |
| HTLHD-UWW-100 | 24V | 2700K | 100 ft | 310Lm / ft | 3.65W / ft | IP54 | 90+ | 1.51" (38.4mm) |
| HTLHD-UWW-CC | 24V | 2700K | Custom Cut | 310Lm / ft | 3.65W / ft | IP54 | 90+ | 1.51" (38.4mm) |
| HTLHD-WW-16 | 24V | 3000K | 16.4 ft | 335Lm / ft | 3.65W / ft | IP54 | 90+ | 1.51" (38.4mm) |
| HTLHD-WW-100 | 24V | 3000K | 100 ft | 335Lm / ft | 3.65W / ft | IP54 | 90+ | 1.51" (38.4mm) |
| HTLHD-WW-CC | 24V | 3000K | Custom Cut | 335Lm / ft | 3.65W / ft | IP54 | 90+ | 1.51" (38.4mm) |
| HTLHD-NW-16 | 24V | 3500K | 16.4 ft | 355Lm / ft | 3.65W / ft | IP54 | 90+ | 1.51" (38.4mm) |
| HTLHD-NW-100 | 24V | 3500K | 100 ft | 355Lm / ft | 3.65W / ft | IP54 | 90+ | 1.51" (38.4mm) |
| HTLHD-NW-CC | 24V | 3500K | Custom Cut | 355Lm / ft | 3.65W / ft | IP54 | 90+ | 1.51" (38.4mm) |
| HTLHD-WH-16 | 24V | 4000K | 16.4 ft | 385Lm / ft | 3.65W / ft | IP54 | 90+ | 1.51" (38.4mm) |
| HTLHD-WH-100 | 24V | 4000K | 100 ft | 385Lm / ft | 3.65W / ft | IP54 | 90+ | 1.51" (38.4mm) |
| HTLHD-WH-CC | 24V | 4000K | Custom Cut | 385Lm / ft | 3.65W / ft | IP54 | 90+ | 1.51" (38.4mm) |
| HTLHD-CW-16 | 24V | 5000K | 16.4 ft | 370Lm / ft | 3.65W / ft | IP54 | 90+ | 1.51" (38.4mm) |
| HTLHD-CW-100 | 24V | 5000K | 100 ft | 370Lm / ft | 3.65W / ft | IP54 | 90+ | 1.51" (38.4mm) |
| HTLHD-CW-CC | 24V | 5000K | Custom Cut | 370Lm / ft | 3.65W / ft | IP54 | 90+ | 1.51" (38.4mm) |

HTLHD (IP54) 16.4ft Reels include: Attached 3ft Lead Wire / (3) TL-CONKIT / (3) TL-BLKS / (3) HD Power Feeds / (3) HD Splice Connectors

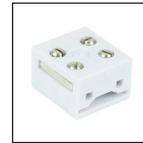
HTLHD (IP54) 100ft Reels include: Attached 3ft Lead Wire / (5) TL-CONKIT / (5) TL-BLKS / (5) HD Power Feeds / (5) HD Splice Connectors

SINGLE COLOR ACCESSORIES

| ITEM NUMBER | DESCRIPTION |
|----------------|---|
| TL-CONKIT | Trulink 4-in-1 Connection Kit |
| TL-BLKS | Trulink 4-in-1 Connector Block (QTY 10) |
| TL-2PWR-HD | 6" HD Power Feed |
| TL-2JUMP6-HD | 6" HD Linking Cable |
| TL-2JUMP24-HD | 24" HD Linking Cable |
| TL-2SPL-HD | HD Tape to Tape Splice Connector |
| WIRE-15-2PIN | 15ft (20/2) Wire Spool |
| INLINE-SC-CTRL | Simple Select In-line Controller (Single Color) |
| SPK-REC-5CH | Spektrum Smart Receiver (App Controlled) |
| LVS-2PIN | In-line Terminal Block |
| RCWY-PVC-1M | 1m Plastic Wire Cover Raceway |



TL-CONKIT



TL-BLKS



TL-2PWR-HD



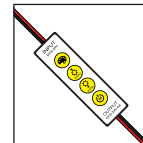
TL-2JUMP6-HD
TL-2JUMP24-HD



TL-2SPL-HD



WIRE-15-2PIN



INLINE-SC-CTRL



SPK-REC-5CH

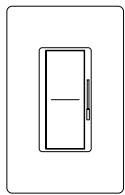


LVS-2PIN



RCWY-PVC-1M

Primary Side Dimming Set-up



Standard Dimmer



Adaptive Series Power Supply
(30W / 60W / 96W / 192W / 288W)



Trulux Tape Light