

# SPTL-TW SERIES TAPE LIGHT

24V Tunable CCT 2700K to 6000K

Need custom color temperature lighting at the turn of a dial? Tunable CCT series is a great option when on the fly color adjustment is a must, or when single CCT options just wont cut it. Adjust color temps from 2700K to 6000K and everything in between to create elegant lighting catered to times of day or application setting.

- Dynamic white color tuning from 2700K up to 6000K
- Alternating 2700K and 6000K LED's for smooth color blending
- 90+ color rendering index
- Up to 510 Lumen output performance
- Consumes up to 7W per foot
- Cuttable every 3.94" with maximum runs up to 13.1ft
- 5-100% Dimmable with most secondary side controls
- Control color temperature via DMX or secondary side controls
- cULus Listed for indoor dry/damp locations
- 50,000 hours rated life

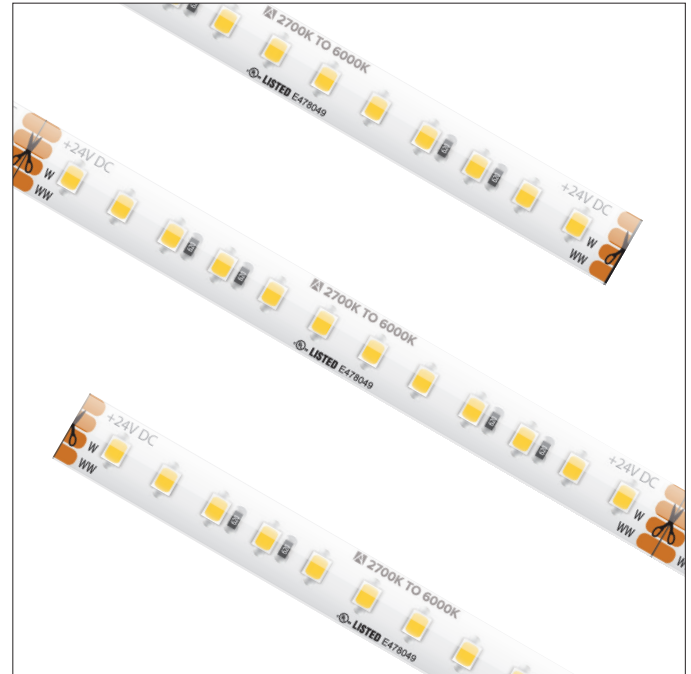


PROJECT: \_\_\_\_\_

TYPE: \_\_\_\_\_

LOCATION: \_\_\_\_\_

CATALOG NUMBER: \_\_\_\_\_



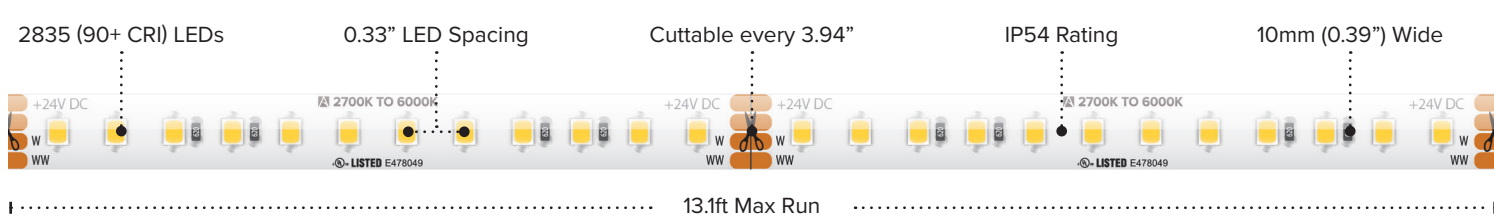
## SPTL-TW SERIES QUICK SPECS

VOLTAGE	24V DC
WATTAGE	7W / ft
LUMENS	Up to 510Lm / ft
CCT	2700K-6000K
CRI	90+
MAX RUN	13.1ft
CUTTING POINTS	3.94" (100mm)
IP RATING	IP54 - Coated
DIMMING	5-100% (Requires Secondary Side Controller)
DIMENSIONS	10mm (0.39") W x 1.65mm (0.06") H
BEAM ANGLE	120°
OPERATING TEMP	5°C (41°F) to 70°C (158°F)
CERTIFICATIONS	cULus Listed - Dry / Damp Location
RATED LIFE	50,000 Hours

## SPTL-TW SERIES IP RATINGS

**IP54 (Coated)**  
 Features a light nano-coating applied to the tape light and LED's that protects from moisture and dust.  
**Best suited:** Indoor dry & damp locations

## SPTL-TW SERIES QUICK LOOK



**SPTL-TW SERIES ORDERING INFORMATION** \*Custom Cut Orders - Please Allow Up To 2-4 Weeks Order Processing & Delivery\*

ITEM NUMBER	VOLTAGE	CCT	LENGTH	LUMENS / FT	WATTAGE / FT	IP RATING	CRI	CUTTING	MAX RUN
SPTL-TW	24V	2700K-6000K	13.1 ft	510Lm / ft	7W / ft	IP54	90+	3.94" (100mm)	13.1 ft
SPTL-TW-CC	24V	2700K-6000K	Custom Cut	510Lm / ft	7W / ft	IP54	90+	3.94" (100mm)	13.1 ft

13.1ft Reels (IP54) Include: Attached 3ft Lead Wire / (3) TL-4PWR-HD / (3) TL-4SPL-HD

**SPTL-TW SERIES ACCESSORIES**

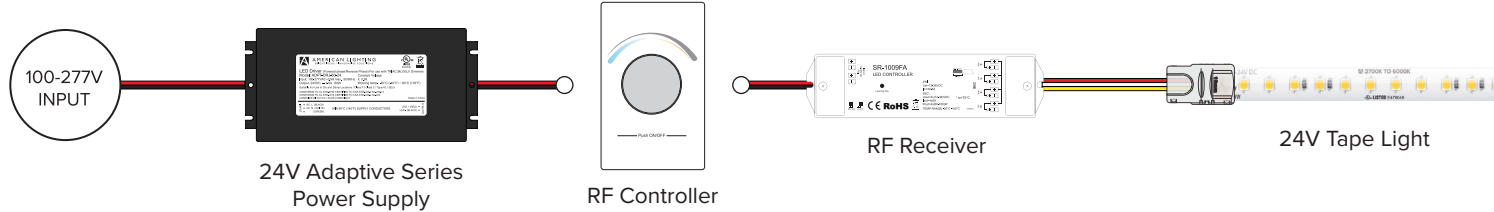
ITEM NUMBER	DESCRIPTION
TL-4PWR-HD	6" HD Power Feed (IP54)
TL-4SPL-HD	HD Splice (IP54)
TL-4JUMP6-HD	6" HD Linking Cable (IP54)
TL-4JUMP24-HD	24" HD Linking Cable (IP54)
WIRE-15-4PIN	15ft (20/4) Wire Spool
WIRE-CMP-100-6PIN	100ft (16/6) In-wall Rated Wire Spool
INLINE-TW-CTRL	Simple Select In-line Controller (Tunable CCT)
RCWY-PVC-1M	1m Plastic Wire Cover Raceway



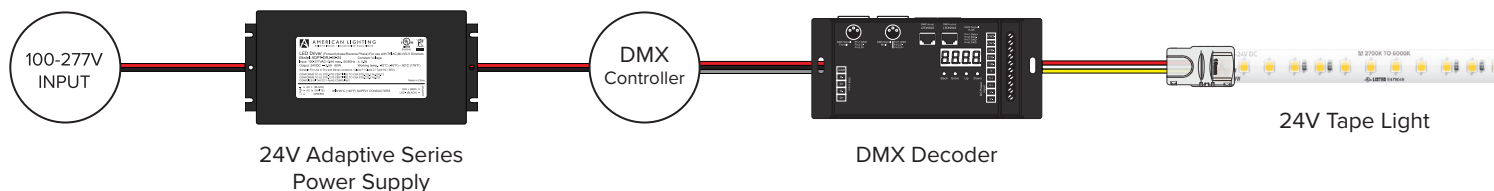
**SPTL-TW SERIES SIMPLE SELECT QUICK SET-UP**



**SPTL-TW SERIES RF QUICK SET-UP**



**SPTL-TW SERIES DMX QUICK SET-UP**



**RECOMMENDED POWER SUPPLIES**

ITEM NUMBER	DESCRIPTION	MAX / MIN LOAD	INPUT VOLTAGE	OUTPUT VOLTAGE	DIMMABLE	DIMENSIONS
ADPT-DRJ-30-24	Adaptive Series 30W	30W / 3W	100-277V AC	24V	Yes*	6.49"L x 3.6"W x 1.02"H
ADPT-DRJ-60-24	Adaptive Series 60W	60W / 6W	100-277V AC	24V	Yes*	7.4"L x 3.6"W x 1.02"H
ADPT-DRJ-96-24	Adaptive Series 96W	96W / 9.6W	100-277V AC	24V	Yes*	8.66"L x 3.6"W x 1.61"H
ADPT-DRJ-192-24	Adaptive Series 192W (2 x 96W)	192W / 19.2W	100-277V AC	24V	Yes*	10.94"L x 4.25"W x 1.8"H
ADPT-DRJ-288-24	Adaptive Series 288W (3 x 96W)	288W / 28.8W	100-277V AC	24V	Yes*	11.85"L x 4.25"W x 1.8"H

\*Phase Dimming Compatible With Most MLV, ELV, and TRIAC Dimmers\*