

INSTALLATION INSTRUCTIONS

CR3-24VDC, CR4-24VDC, & CR3-12VDC



⚠ WARNING

These products may represent a possible shock or fire hazard if improperly installed or attached in any way. Products should be installed in accordance with these instructions, current electrical codes, and/or the current National Electric Code (NEC).

⚠ WARNING

Use only with 12V DC or 24V DC constant voltage LED drivers with a wattage capacity that can handle the total load. Factory warranty will be void if used with a non-recommended power supply, transformer, or driver.

⚠ WARNING

To reduce the risk of fire, electric shock or injury to persons, make sure that the electrical power to the system is disconnected at the source prior to installation or any servicing.

SAFETY INFORMATION

- Read all installation instructions before beginning; if not qualified, do not attempt installation. Contact a qualified electrician.
- To reduce the risk of fire, electric shock, or injury to persons, pay close attention to this manual and stay within its guidelines when using this product. Save these instructions for future use.
- Do not cover this product with paper surface coverings, fabrics, streamers, or other similar combustible materials.
- Do not install near flammable liquids or other flammable materials.
- Modules CR3-24VDC-XX-5-20 & CR4-24VDC-XX-5-20 are rated IP66 and CR3-12VDC-RGBW-5-20 & CR3-12VDC-PXLRGB-5-20 are rated IP65; suitable for indoor use in dry and damp locations, but not for direct contact with water or moisture. It is not recommended to use modules in places directly exposed to atmospheric conditions such as rainfall, UV radiation, etc.
- Do not submerge light in liquids, or use the product in the vicinity of standing water or other liquids, or where water can accumulate.
- Do not route LED modules or wiring through walls, ceilings, doors, windows, or any similar part of the building structure.
- Secure LED modules using only the adhesive backing provided.
- Do not secure this product or its cord with staples, nails, or like means that may damage the outer jacket or cord insulation.
- Do not use if there is any damage to the LED module housing, diodes, or wiring insulation; inspect periodically.
- Do not attempt to open or service the fixture. No parts are serviceable.
- This product and its packaging are for decorative use only and are not intended to be used as a toy. Keep away from small children. Assembly should not be done in the company of small children.
- Ensure all wire connections are made properly and sealed with wire cover.
- The rated operating temperature range is -25°C (-13°F) to 60°C (140°F).
- Do not exceed 20 LED modules connected in series to one power supply.
- Size your 12V DC or 24V DC driver appropriately for your run distance. Be sure not to load a driver to 100% as this will reduce its efficiency; a 90% maximum load is recommended.

LAYOUT CONSIDERATIONS

- Prior to installation, this product should be checked according to order (model, color temperature, quantity, etc) and tested to ensure that it is free from any defects.
- Determine desired mounting locations for each LED module and mark with a pencil. Ensure the distance from the first LED module to the power supply/driver does not cause tension or tugging on the power cable or pose a tripping/hooks hazard.
- Product assembly is recommended on surfaces that provide heat dissipation, e.g. aluminum profiles. The type of substrate and air flow around modules (cooling conditions) may directly impact the declared longevity of the product.

SKU	Voltage	Wattage (Per Module)	Modules (Per String)	Module Spacing	LEDs per Module	Type
CR3-24VDC-XX-5-20	24V DC	1.08W	20	5" (130mm)	3	Static White
CR4-24VDC-XX-5-20	24V DC	1.2W	20	5.9" (150mm)	4	Static White
CR3-12VDC-RGBW-5-20	12V DC	0.96W	20	3.39" (86mm)	3	RGBW
CR3-12VDC-PXLRGB-5-20	12V DC	0.76W	20	3.3" (83mm)	3	Dynamic Pixel RGB SPI

PRODUCT INFORMATION

LED Channel Rays come with pre-attached bare wire leads and 3M™ VHB adhesive backing.

CARE AND MAINTENANCE:

1. For cleaning, use a soft, dry or damp cloth. Do not use harsh chemicals or abrasives.

INSTALLATION INSTRUCTIONS

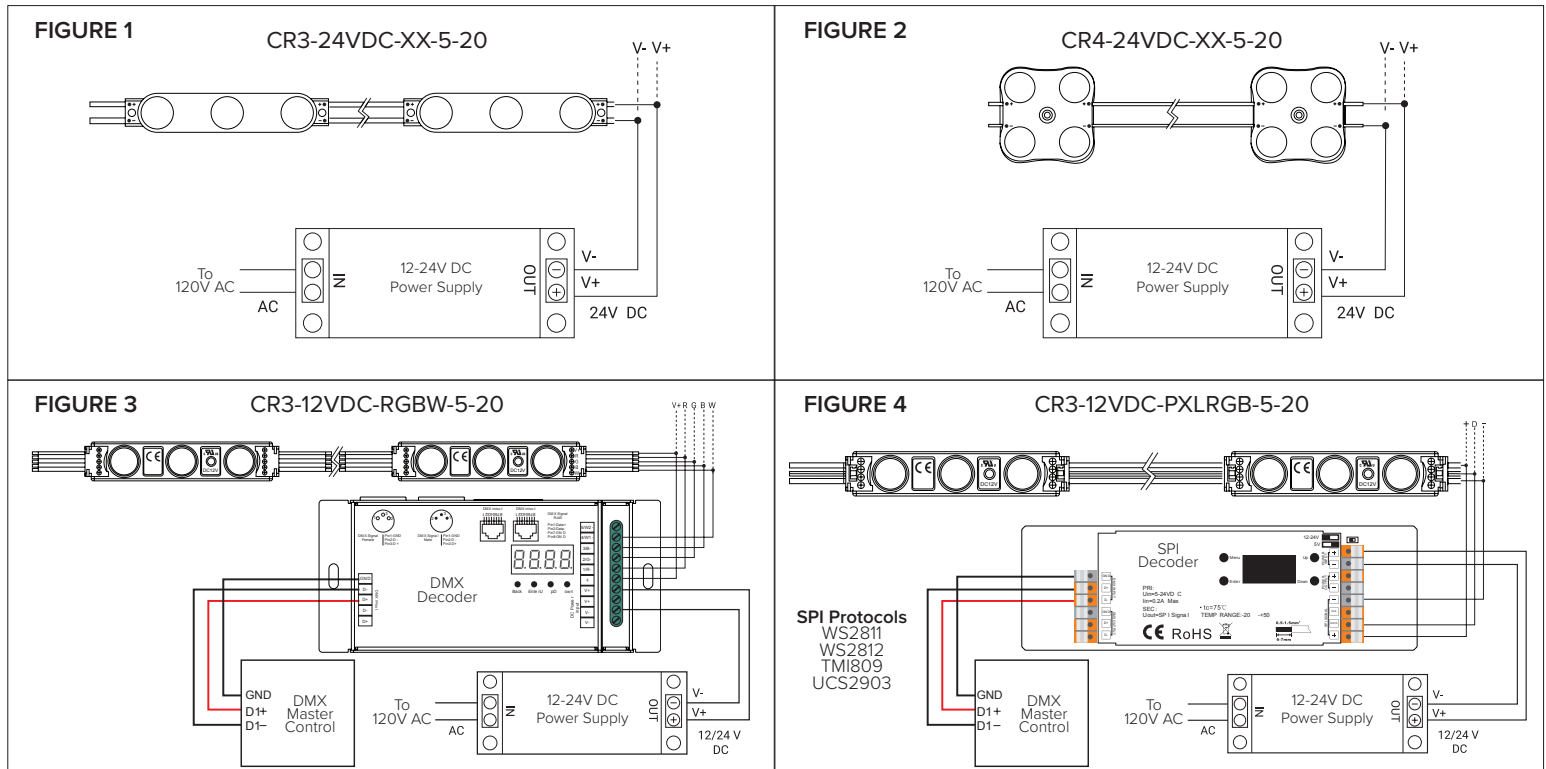
CR3-24VDC, CR4-24VDC, & CR3-12VDC



INSTALLING CHANNEL RAYS (Figures 1-4):

Disconnect power at the source prior to attempting installation or service of product.

1. Determine the desired locations for each channel ray. Mark each location. Ensure there is slack (no tension) from the lead wire to the driver/ power supply.
2. Clean the surface thoroughly with a degreaser and wipe clean. Let dry.
3. Peel the protective backing from the adhesive on the back of the channel ray, then press the channel ray in place. For best results, once the VHB protective sheet is removed, the channel ray should not be repositioned, removed, or reused.
4. Wire the channel ray to a driver and/or controller as applicable. See Figures 1-4 for reference.



5-YEAR LIMITED PRODUCT WARRANTY

This product is warranted to be free from defects in material and workmanship for a period of five (5) years from the date of purchase. Products that prove to be defective during this period will be either repaired (i.e. replacement of defective electronics, defective parts of the fixture housing, lens, wiring, switching or lamp sockets; excluding the lamp) or replaced, at the discretion of American Lighting, Inc. Claims for defective products must be submitted to the retail location from which the product was purchased within the warranty period. Upon submission of proper return claim documentation and product to American Lighting, Inc by the retailer, American Lighting, Inc reserves the right to inspect the product for misuse or abuse. Claims for indirect or consequential damages or for product that, in American Lighting, Inc's opinion has been misused, will be denied. This is a warranty of product reliability only and not a warranty of merchantability or fitness for a particular purpose. American Lighting, Inc shall have no liability whatsoever in any event for payment of incidental or consequential damages, including, without limitations, installation costs and damages for personal injury and property. These products may represent a possible shock or fire hazard if improperly installed or altered in any way. This warranty applied only to product that has been properly installed in accordance with instruction sheet and current local codes and/or the National Electrical Code. Warranty does not apply to any product that has been improperly installed or in situation where components have been altered in any way. This warranty: (1) excludes expendable parts including but not limited to light bulbs, batteries; (2) carries a 1-year finish warranty protecting finish against tarnishing, flaking, and discolorations; (3) shall be void if this lighting fixture is not installed in the U.S.A.; and (4) does not cover any losses, labor, injuries to persons/property or costs. This warranty does give you specific legal rights and you may have other rights, which vary from state to state. Be careful, it is recommended that installation be done by a qualified professional; the purchaser has sole responsibility for proper installation in compliance with all state and local code requirements. Seller's employees are not qualified to advise you on the use of this Merchandise. Any oral representation(s) made will not be binding on seller or its employees. The rights under this limited warranty are to the original purchaser of the Merchandise and may not be transferred to any subsequent owner. This limited warranty is in lieu of all warranties, expressed or implied including warranties or merchantability and fitness for a particular purpose. Seller shall not be liable for any special, incidental, or consequential damages. The sold exclusive remedy against the seller will be for the replacement of any defects as provided herein, as long as the seller is willing or able to replace this product or is willing to refund the purchase price as provided above.

For questions/comments, technical assistance, or repair parts - Please call toll free at 1-800-285-8051 (M-F 8am-5pm), CST)