

MODELLO i PURCHASING & PLANNING GUIDE

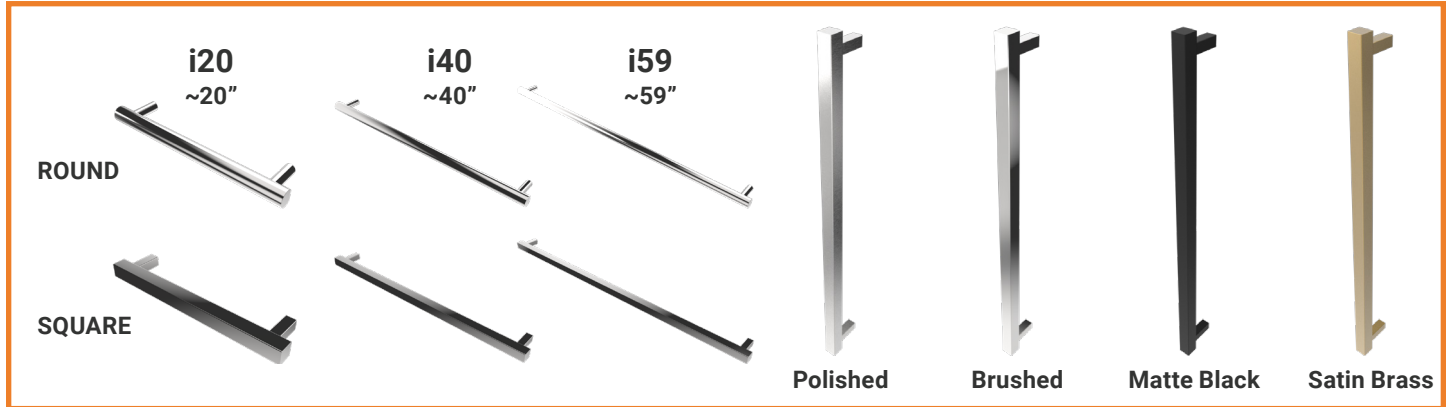
STEP 1: SELECT YOUR BAR STYLE AND SIZE

Bar Styles: Choose between Round (RO) or Square (SQ) bars.

Sizes: Available in three lengths—i20, i40, and i59, in both Round and Square styles.

Finishes: Choose from Polished Stainless Steel (P), Brushed Stainless Steel (B), Matte Black (MB), and Satin Brass (SB).

Installation: Bars can be installed horizontally or vertically, offering design flexibility to fit your space.



STEP 2: CHOOSE YOUR HEAT CONTROLLER + FINISH

A Touch Digital Heat Controller (TDHC or TDHCR) is required to operate your Modello i system.

IMPORTANT: WITHOUT A CONTROLLER YOUR TOWEL BAR WILL NOT FUNCTION.

TOUCH DIGITAL HEAT CONTROLLER



FOR SINGLE BAR INSTALLATIONS:

Use the **ATW-TDHC** for installations with single bars for easy wiring.

When using the TDHC, a concealed wall box (ATW-CWB) *sold separately* is required to connect each bar to the wall.

FOR MULTIPLE BARS:

Use the **ATW-TDHC** for installations where the control panel is placed elsewhere (e.g., near a light switch)

One Concealed Wall Box (ATW-CWB) is required per bar.

REMOTELY-WIRED CONTROLLER



Power Limit: Both TDHC models support up to 1200 watts of power. For example, the i59 bar is rated at 30 watts each, so you can connect multiple bars to a single TDHC.

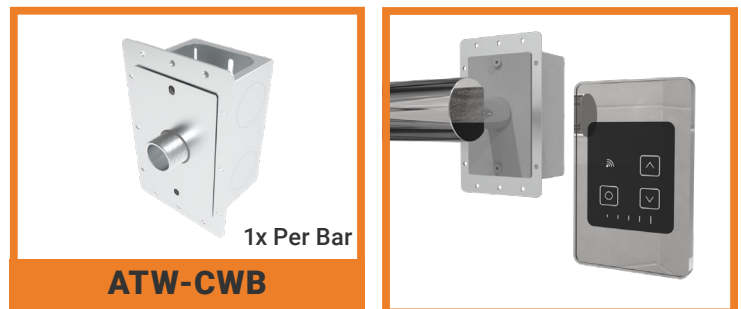
FOR 3-BAR SETUP

	WALL BOXES
	3x ATW-CWB
	BARS
	3x i20RO
	TOUCH CONTROL
	1x ATW-TDHC

Typical 3-Bar Setup with Remotely-Wired Touch Digital Heat Controller

See planning guide on next page for more details.

CONCEALED WALL BOX



The concealed wall box allows each Modello i bar to be wired into a wall for a clean, seamless installation when paired with the ATW-TDHC. The ATW-TDHC does NOT require it's own Concealed Wall Box.

The ATW-TDHC/ATW-TDHC are compatible with most hardwired timers or smart switches, allowing added programming and scheduling functionality.

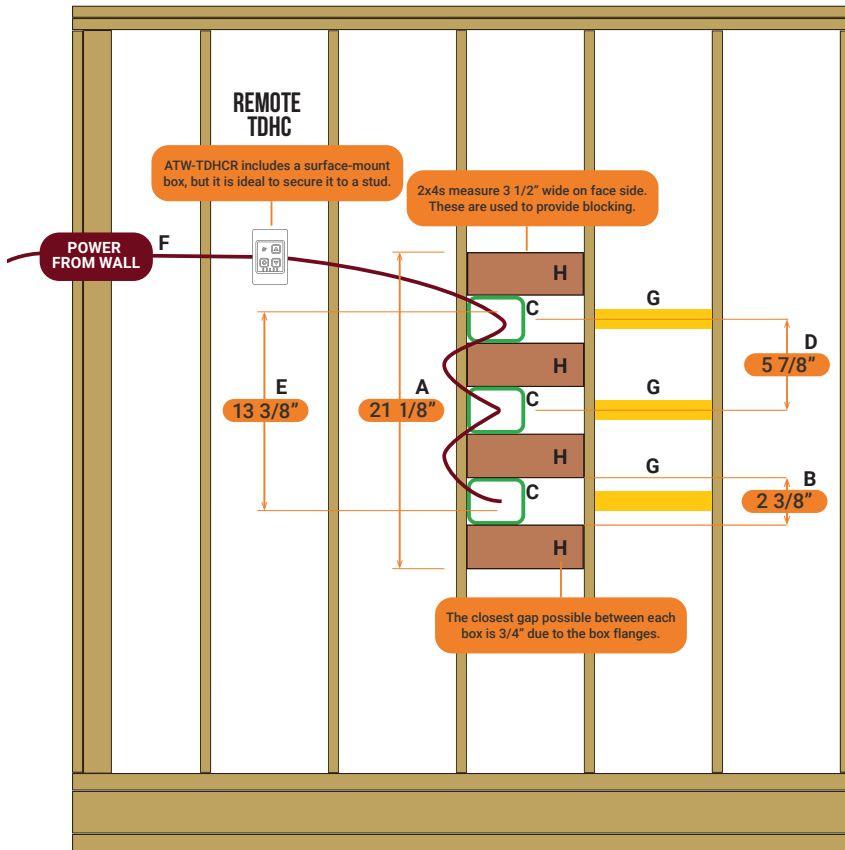
ATW-T24: Programmable Timer | ATW-SS: Smart Switch | ATW-CDT: Countdown Timer

MODELLO i

PLANNING GUIDE

3-Bar Horizontal Setup

This layout shows a standard 3-bar configuration. If desired, you can modify the spacing or add additional bars to suit your specific needs and preferences.



- A - Top of blocking to bottom
- B - Gap between blocking where concealed wall box will go
- C - Concealed wall box placement (ATW-CWB)
- D - Center-to-center between boxes
- E - Distance from top of 1st bar to bottom of 3rd bar
- F - Wires from wall to the ATW-TDHC and to each ATW-CWB in series
- G - Blocking for non-electrical mounting point on wall
- H - Blocking for concealed wall box (ATW-CWB)



A standard bath towel is approximately 30" W x 60" H. Fold it in half lengthwise and widthwise - it is now approximately 15" W x 30" H. Place the towel over the top bar so that half of the 30" length hangs over either side, covering all three bars.

EXAMPLE PRICING BREAKDOWN

ITEMS	QTY	LIST PRICE	COST
i20RO	3	US\$310 / CAD \$620	\$930 / CAD \$1,860
ATW-CWB	3	US\$90 / CAD \$140	\$270 / CAD \$420
ATW-TDHC	1	US\$340 / CAD \$525	\$340 / CAD \$525
TOTAL:			US\$1540 / CAD \$2,805



SCAN FOR
MODELLO i
INSTALLATION
GUIDE



www.ambaproducts.com | +1(404) 350-9738

SCAN FOR
MODELLO i
TECHNICAL
DRAWINGS

