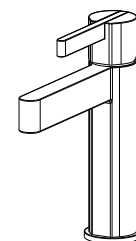


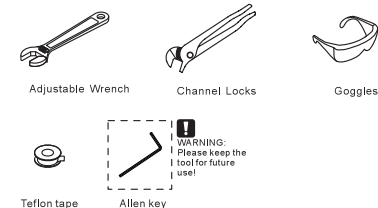
NO.	Description
1	Button
2	Screw
3	Handle
4	Handle Cup
5	Screw
6	Cup
7	Bonnet
8	Cartridge
9	O-Ring
10	Cartridge Seat
11	Body
12	Aerator
13	Lower Ring
14	O-Ring
15	Coop
16	Ring
17	Gasket
18	Lock Nut
19	O-Ring
20	Copper tube
21	Copper tube
22	Supply Hose



### Single Handle Basin Faucet

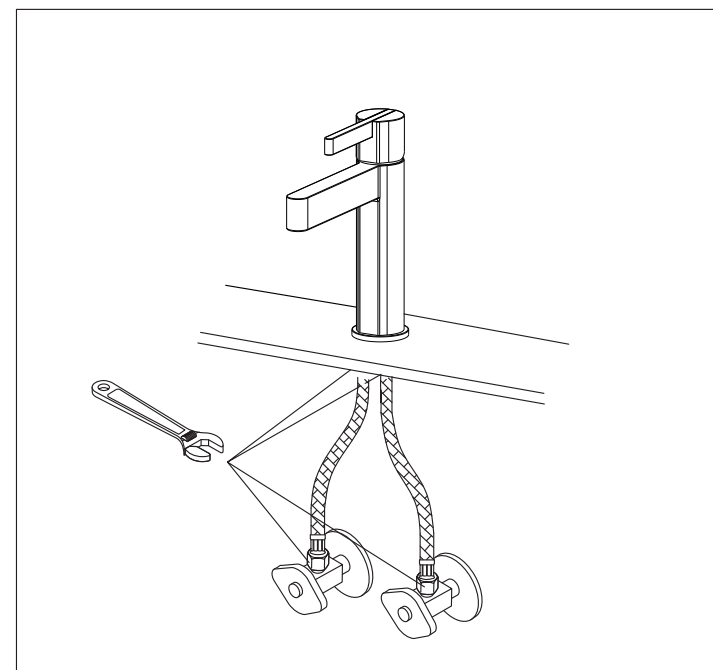
product is cUPC, NSF-61, NSF 372, AB1953, CEC,  
WaterSense certified by IAPMO R&T.  
ASMEA112.18.1/CSAB125.1

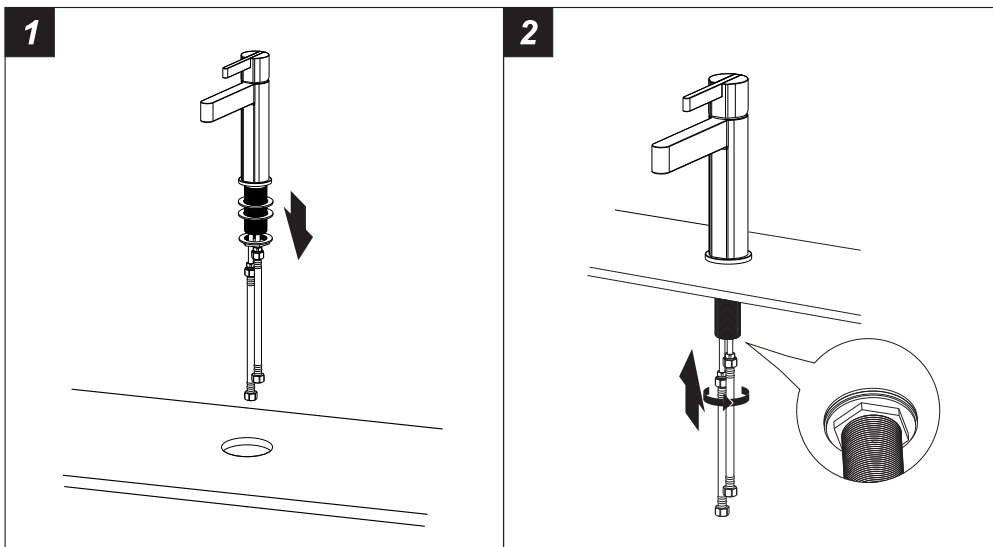
#### RECOMMENDED TOOLS



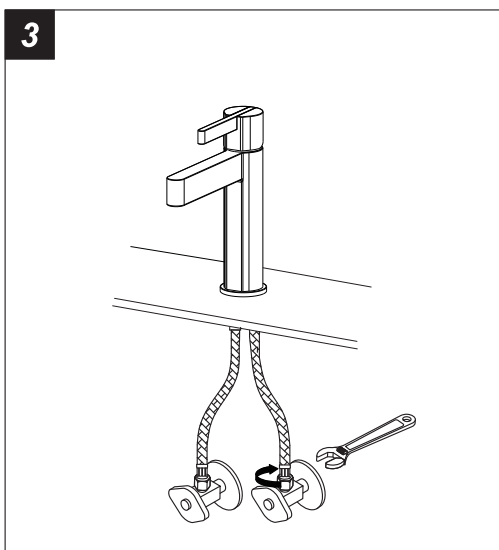
**Attention:**  
for easy installation, you will need:  
1.To read all the installation instruction completely before beginning.  
2.To read all the warning, attention and maintenance information.

The tools might be applied to the following places:

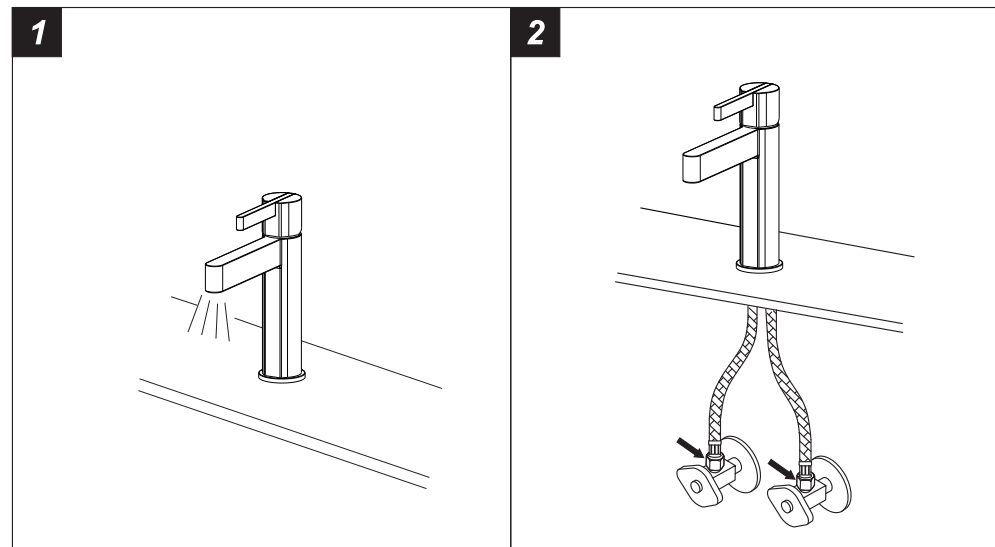


**Step 1 Faucet installation**

1. Unscrew the pre-assembled washers & lock nut.
2. Screw rubber washer, metal washer onto the pipe under sink and screw with lock nut.



3. Connect the flexible hoses to water supply valve (not included) and copper tubes, and tighten it with adjustable wrench. **DON'T OVER TIGHTEN!**  
Caution: make sure connect the hot and cold flexible hose to supply valves correctly.

**Step 2 Checking and testing**

1. Turn the faucet handle all the way on, turn on hot and cold water supply and flush water lines for one minute.
2. Check all connections at arrows for leaks, re-tighten it if necessary.



**BUT DON'T OVERTIGHTEN**

**Step 3 Cleaning and care**

Daily cleaning and care are required in order to keep the product shining and properly working.

- 1 Clean it with water and dry it with soft cloth.
- 2 Clean the product with gentle liquid or glass cleaner.
- 3 Don't use acid cleaner.
- 4 Don't clean with abrasive material, abrasive paper or knife.