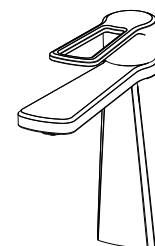


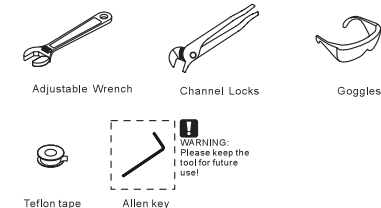
NO.	Description
1	Button
2	Screw
3	Handle
4	Cup
5	Bonnet
6	O-Ring
7	Cartridge
8	Body
9	Aerator
10	O-Ring
11	Cartridge Seat
12	Screw
13	O-Ring
14	Coop
15	Ring
16	Gasket
17	Lock Nut
18	Supply Hose



### Single Handle Basin Faucet

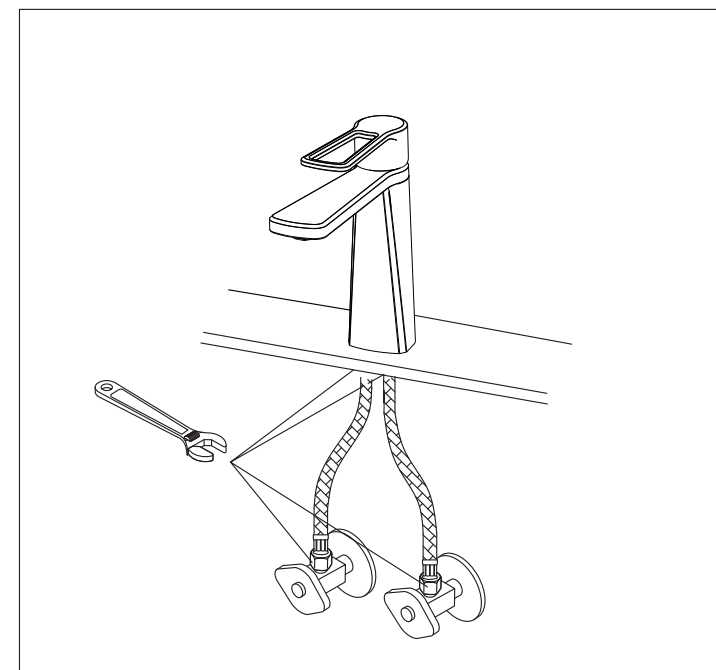
product is cUPC, NSF-61, NSF 372, AB1953, CEC,  
WaterSense certified by IAPMO R&T.  
ASME A112.18.1/CSA B125.1

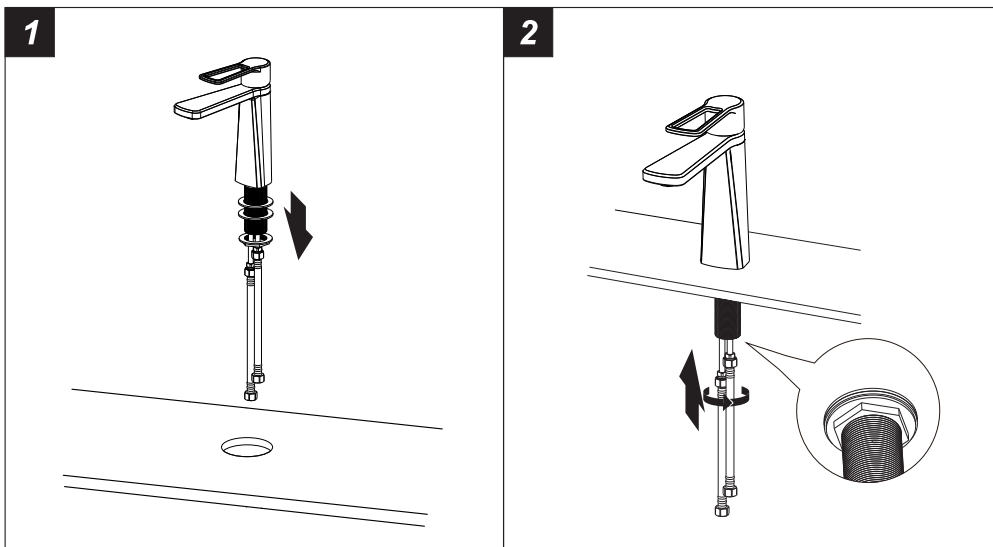
#### RECOMMENDED TOOLS



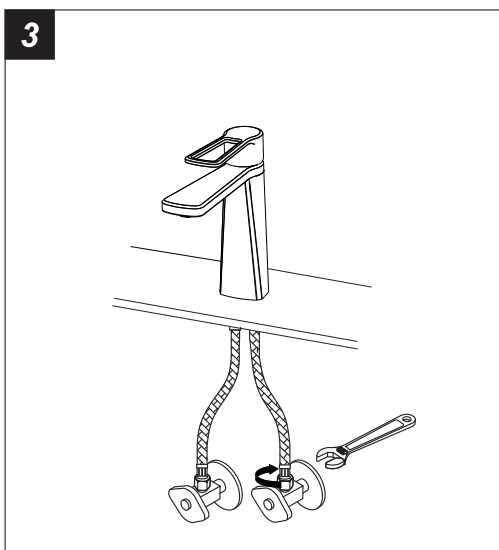
**Attention:**  
for easy installation, you will need:  
1.To read all the installation instruction completely before  
beginning.  
2.To read all the warning, attention and maintenance  
information.

The tools might be applied to the following places:

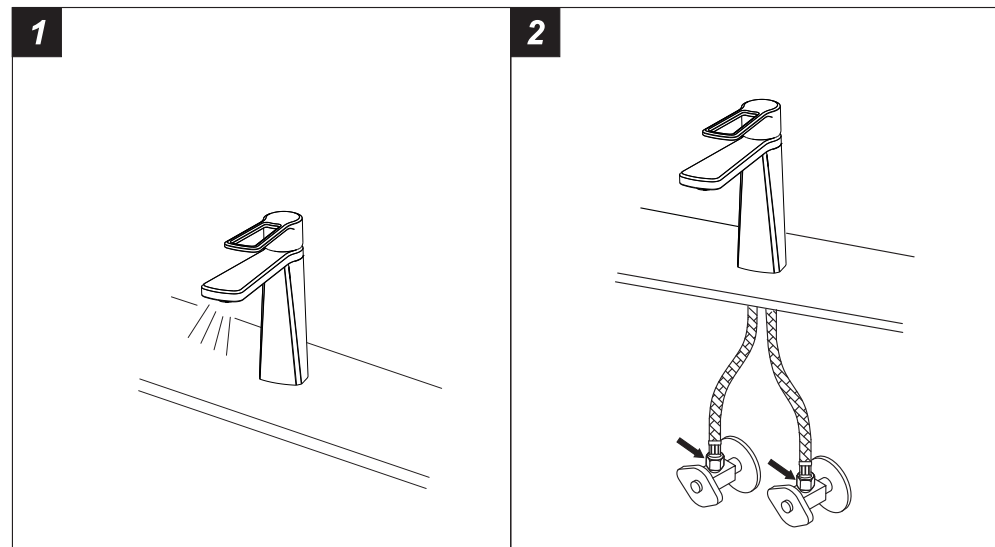


**Step 1 Faucet installation**

1. Unscrew the pre-assembled washers & lock nut.
2. Screw rubber washer, metal washer onto the pipe under sink and screw with lock nut.



3. Connect the flexible hoses to water supply valve (not included) and copper tubes, and tighten it with adjustable wrench. **DON'T OVER TIGHTEN!**  
Caution: make sure connect the hot and cold flexible hose to supply valves correctly.

**Step 2 Checking and testing**

1. Turn the faucet handle all the way on, turn on hot and cold water supply and flush water lines for one minute.
2. Check all connections at arrows for leaks, re-tighten it if necessary.



**BUT DON'T OVERTIGHTEN**

**Step 3 Cleaning and care**

Daily cleaning and care are required in order to keep the product shining and properly working.

- 1 Clean it with water and dry it with soft cloth.
- 2 Clean the product with gentle liquid or glass cleaner.
- 3 Don't use acid cleaner.
- 4 Don't clean with abrasive material, abrasive paper or knife.