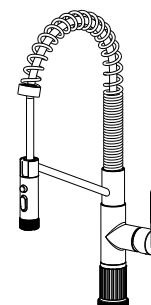


NO.	Description	NO.	Description
1	Shower head	28	Screw
2	Check Valve	29	Button
3	Shower head card	30	Extension set
4	Rubber cover for shower seat	31	Base
5	Gauze rubber ring	32	Bottom ring
6	Hose connector	33	Rubber ring
7	Nozzle connector	34	Plastic base gasket
8	Spring tube	35	Bottom sleeve
9	Tubes	36	Inner hole primer
10	Bracket	37	Inner hole negative
11	Swing center	38	Nut
12	Anti-wear rubber ring	39	Rubber cover
13	Split clasp	40	Rubber ring
14	Rubber ring	41	Outlet Pipe
15	Open clasp with hole	42	Copper pipe
16	Screw	43	Outlet pipe
17	Body	44	Check valve
18	Screw	45	Rubber ring
19	Spool seat	46	Quick adapter sleeve
20	Pin spool	47	Quickly connect the clasp
21	Gland	48	Braided tube
22	Cup	49	Braided tube
23	Screw	50	Hose
24	Handle decorative fittings	51	Rubber ring
25	Handle lever	52	Key
26	Handle lever	53	Quick Shot Put
27	Handle cup		



Pull Down Kitchen Faucet

product is cUPC, NSF -61, NSF 372, AB1953, CEC,
certified by IAPMO R&T.

ASME A112.18.1/CSA B125.1

RECOMMENDED TOOLS



Adjustable Wrench



Channel Locks



Goggles



Teflon tape



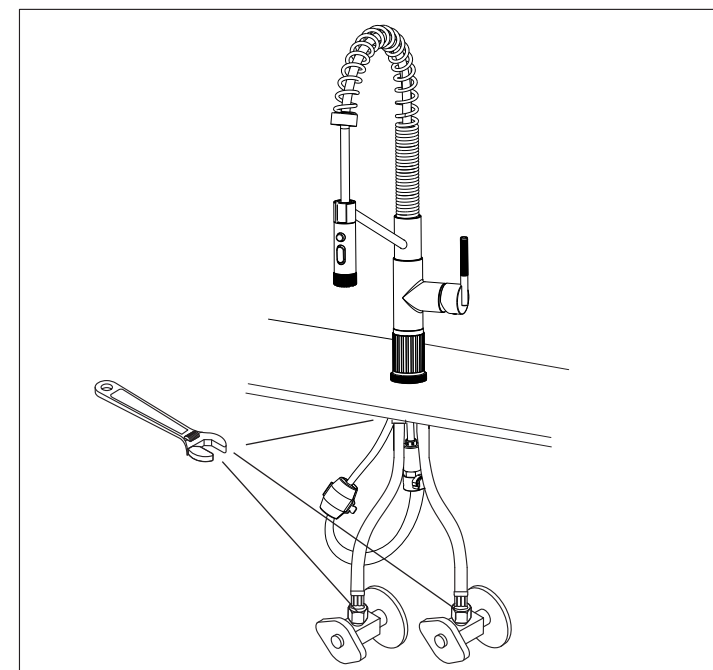
Allen key

WARNING:
Please keep the
tool for future
use!

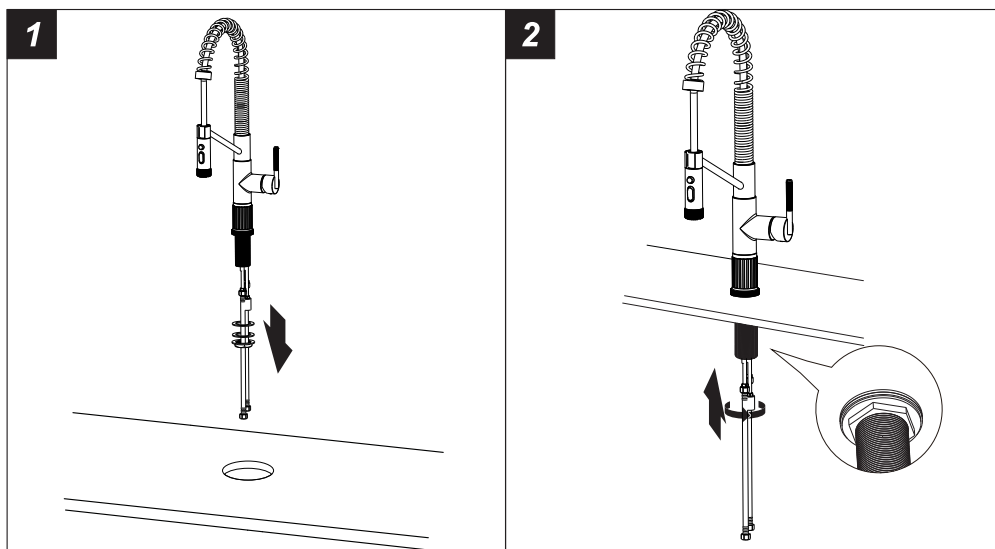


Attention:
for easy installation, you will need:
1.To read all the installation instruction completely before
beginning.
2.To read all the warning, attention and maintenance
information.

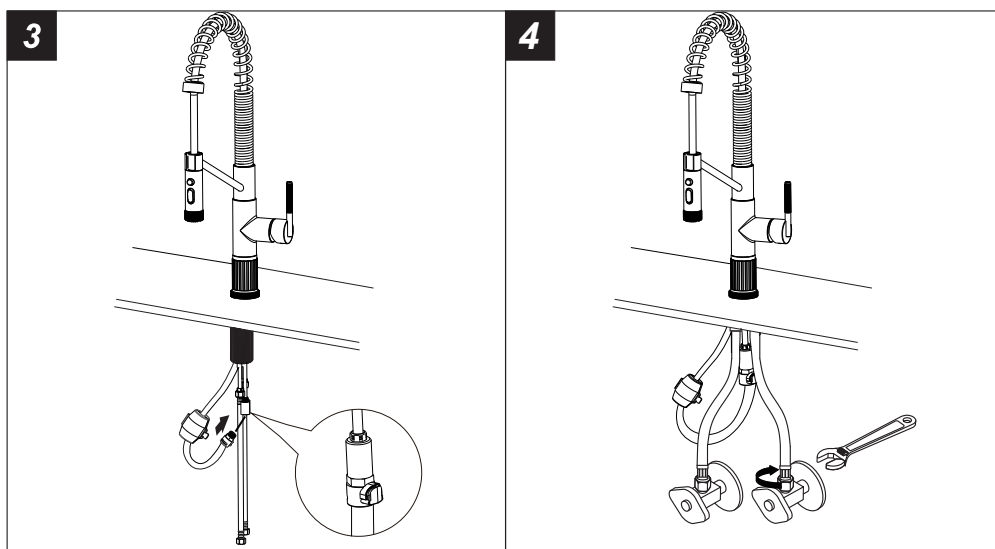
The tools might be applied to the following places:



Step 1 Faucet installation

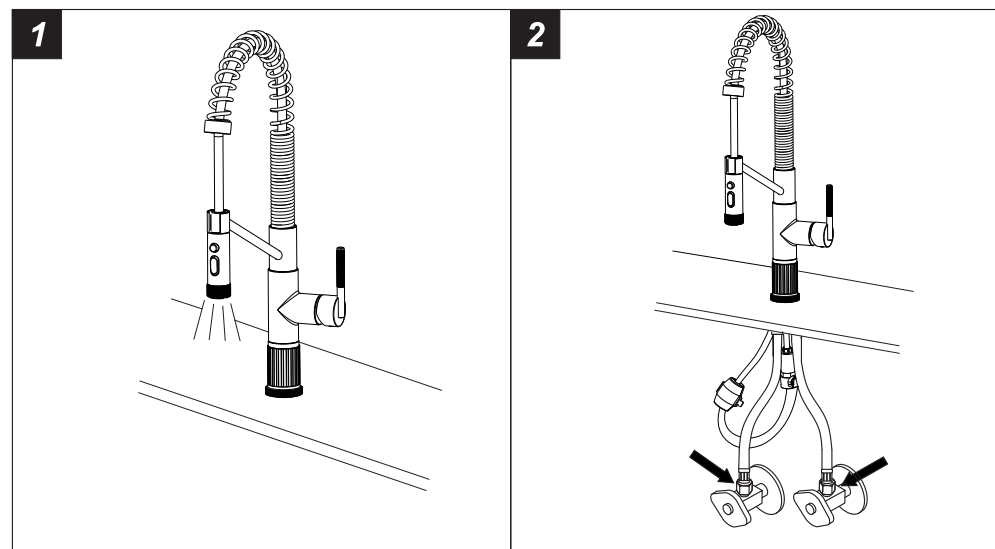


1. Unscrew the pre-assembled washers & lock nut.
2. Screw rubber washer, metal washer onto the pipe under sink and screw with lock nut.



3. Screw spray hose to the copper pin (the longest pin). Make sure to have a tight seal using adjustable wrench. Attach supplied counter-weight to the hose.
 4. Connect the flexible hoses to water supply valve (not included) and copper tubes, and tighten it with adjustable wrench. **DON'T OVER TIGHTEN!**
- Caution: make sure connect the hot and cold flexible hose to supply valves correctly.

Step 2 Checking and testing



1. Turn the faucet handle all the way on, turn on hot and cold water supply and flush water lines for one minute.
2. Check all connections at arrows for leaks, re-tighten it if necessary.



BUT DON'T OVERTIGHTEN

Step 3 Cleaning and care

Daily cleaning and care are required in order to keep the product shining and properly working.

1. Clean it with water and dry it with soft cloth.
2. Clean the product with gentle liquid or glass cleaner.
3. Don't use acid cleaner.
4. Don't clean with abrasive material, abrasive paper or knife.