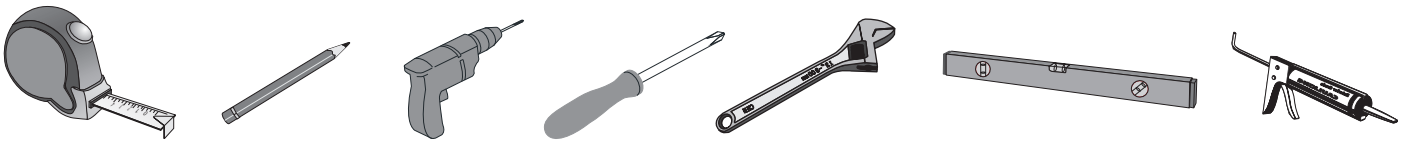
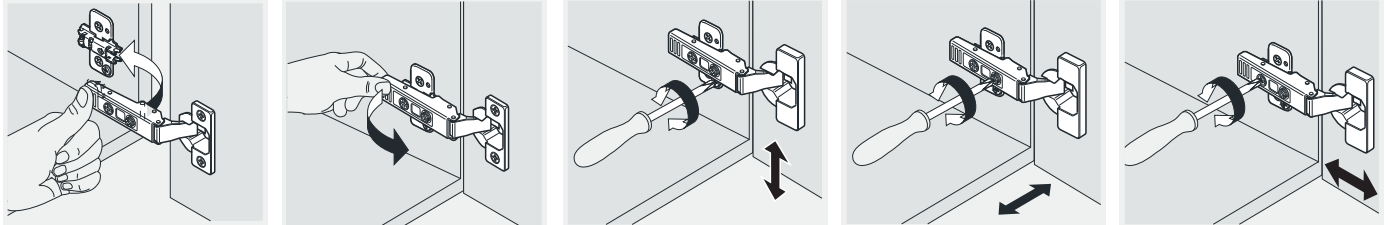




## Erecting Tool/Outils d'assemblage



### Install, Remove, Adjust Of Top Fast Loading Hinge / Montage, démontage et réglage de la charnière de chargement rapide



Install/l'installation

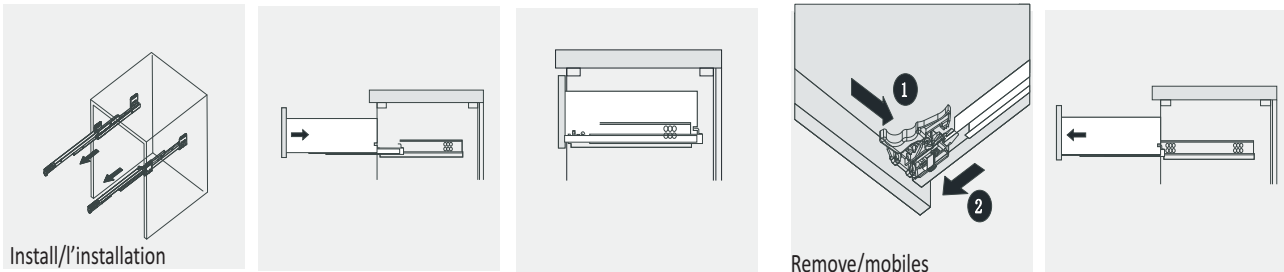
Remove/mobiles

Adjust the height/Hauteur de réglage

adjust the lateral/Réglage latéral

Adjust the depth/Profondeur de réglage

### Installation Instruction/Instructions d'installation



Install/l'installation

Remove/mobiles

### Drawer Adjust/ tiroir ajuster

② Place ALTAIR vanity top onto the cabinet, making sure vanity is seated properly.

① Apply a bead of adhesive or silicone onto each edge of cabinet top. You can leave the EVA buffer strip or tear it off, before glue the top.

24H

Do not use the vanity for at least 24 hour, in order to allow the glue to cure fully.

1. Sticky Ceramic Basin/Bassin en céramique collant

2. Install pop-up, faucet and basin / Installer des éventails, des robinets et des lavabos

3. Fix the mirror/Miroirs de réparation

4. Hang the Mirror/Suspendus Miroirs