

# Model/Le modèle: 558060

- Please check your product packaging to make sure the included accessories are in the "list of standard accessories". If any parts are missing, please contact your local dealer immediately.

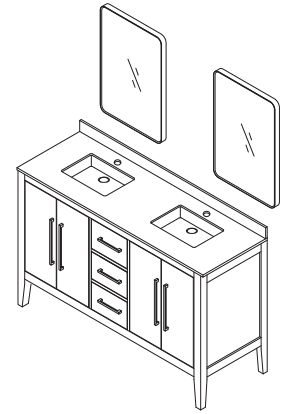
- Do not allow any sharp objects to come in contact with the cabinet, as it will scratch the surface.

- Continuous and prolonged exposure to direct sunlight may cause discoloration to the wood.

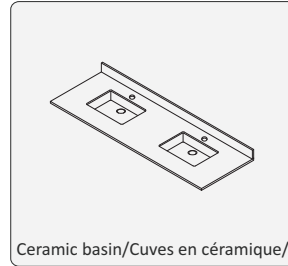
- Do not put any hot appliances directly on or near the cabinet.

- Please avoid using cleaning products that contain bleach or ammonia.

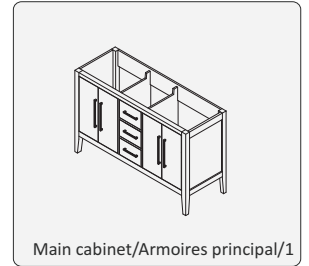
- Wood surfaces should only be cleaned with wood care products such as soapy water or furniture polish.



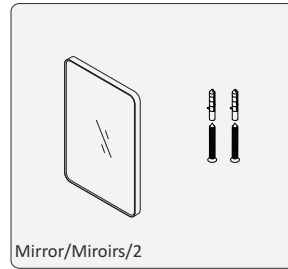
## Main Body Parts/La partie principale du corps



Ceramic basin/Cuves en céramique/1

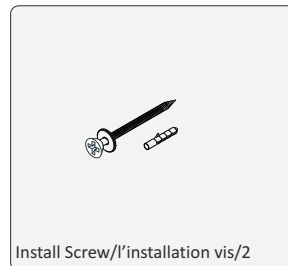


Main cabinet/Armoires principal/1



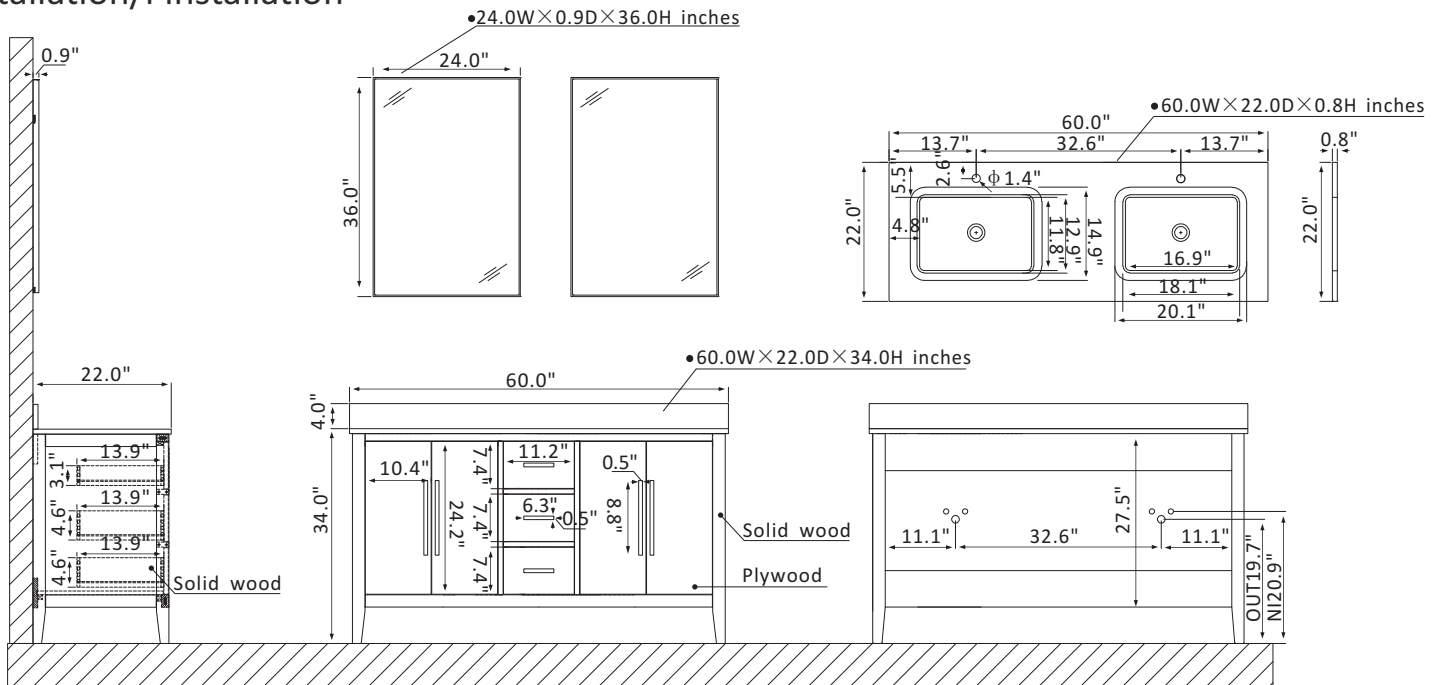
Mirror/Miroirs/2

## Installation Parts/Partie d'installation

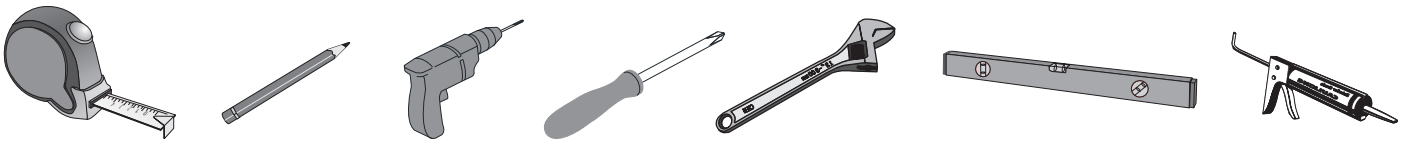


Install Screw/l'installation vis/2

## Installation/l'installation



## Erecting Tool/Outils d'assemblage



### Install, Remove, Adjust Of Top Fast Loading Hinge / Montage, démontage et réglage de la charnière de chargement rapide



Install/l'installation

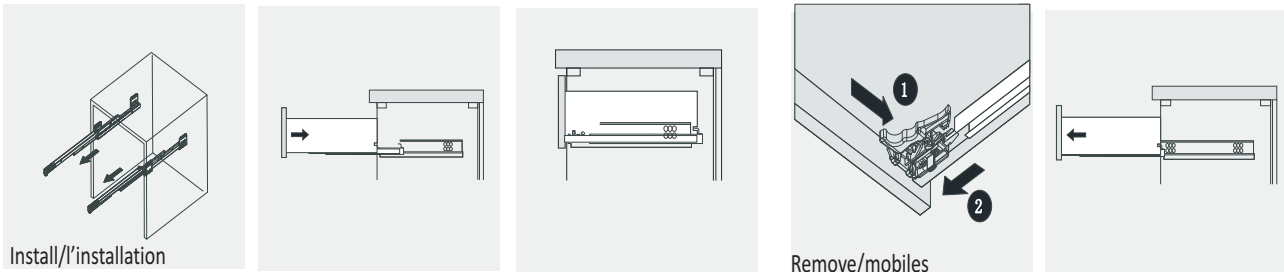
Remove/mobiles

Adjust the height/Hauteur de réglage

adjust the lateral/Réglage latéral

Adjust the depth/Profondeur de réglage

### Installation Instruction/Instructions d'installation



Install/l'installation

Remove/mobiles

### Drawer Adjust/ tiroir ajuster

① Apply a bead of adhesive or silicone onto each edge of cabinet top.

② Place ALTAIR vanity top onto the cabinet, making sure vanity is seated properly.

**24H**  
Don't use the vanity for at least 24 hour, in order to allow the glue to cure fully.

1. Sticky Ceramic Basin/Bassin en céramique collant

2. Install pop-up, faucet and basin / Installer des éventails, des robinets et des lavabos

3. Hang the Mirror/Suspendus Miroirs