

# "Creations"®

by  
ALNO, INC.

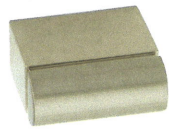


CABINET  
HARDWARE

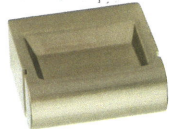
07/16/18



VOGUE / TEMPO / REDONDO / SIMPLICITY



**A430-SN**  
1" Knob



**A430-SN**  
1" Knob Underside  
With Recessed Lip



**A430-3-SB**  
3" Pull



**A430-35-PC**  
3 1/2" Pull



**A430-4-SN**  
4" Pull

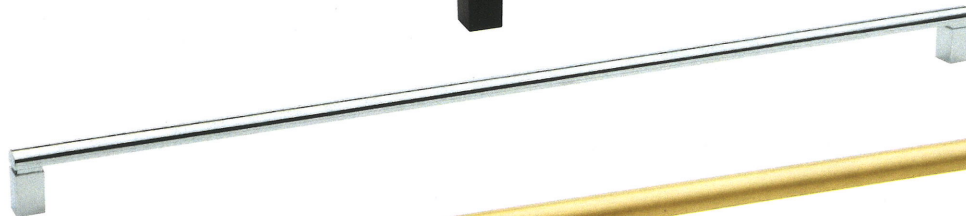
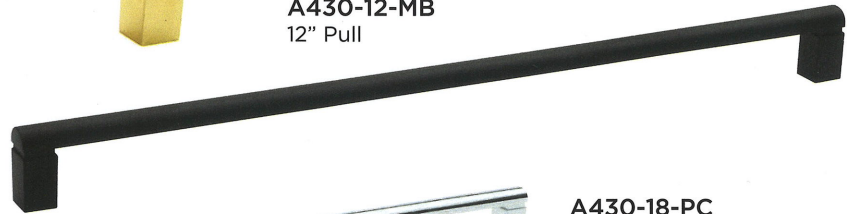


**A430-6-PN**  
6" Pull



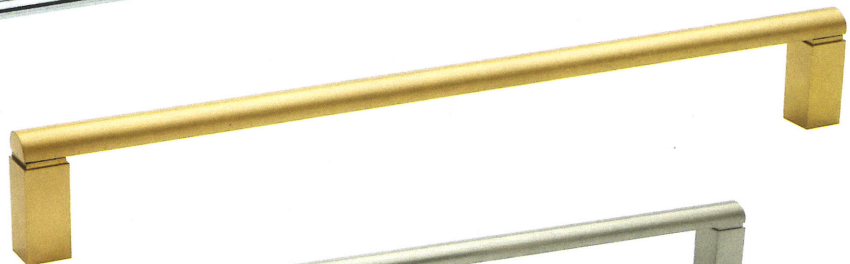
**A430-8-PB**  
8" Pull

**A430-12-MB**  
12" Pull

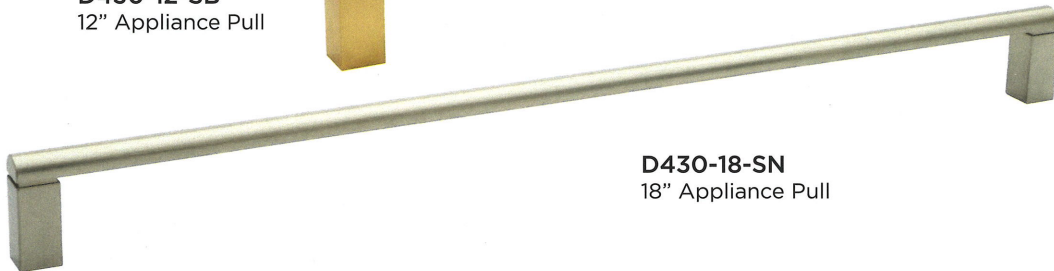


**A430-18-PC**  
18" Pull

**D430-12-SB**  
12" Appliance Pull



**D430-18-SN**  
18" Appliance Pull



**AVAILABLE FINISHES**



**MB**  
Matte Black



**PB**  
Polished Brass



**PB/NL**  
Polished Brass / No Lacquer



**PC**  
Polished Chrome



**PN**  
Polished Nickel



**SB**  
Satin Brass



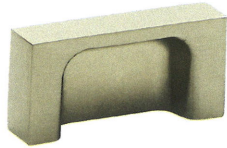
**SN**  
Satin Nickel

VOGUE												
Stock No.	Weight	Description	Material Base	CC	Length	Width	Proj.	Base Width	List Price Group 1 (PB, PB/NL, PC)	List Price Group 2 (PN)	List Price Group 3 (MB, SB, SN)	List Price Group 4 *SPECIAL FINISHES
A430	2.5 oz	1" Knob	Brass		1 1/16"	1/2"	1 1/16"	1 1/16"	\$13.95	\$14.95	\$15.95	\$18.00
A430-3	3.5 oz	3" Pull	Brass	3"	3 1/2"	1/2"	1 1/16"	1/2"	\$20.95	\$23.95	\$24.95	\$30.00
A430-35	3.8 oz	3 1/2" Pull	Brass	3 1/2"	4"	1/2"	1 1/16"	1/2"	\$22.95	\$24.95	\$26.95	\$32.00
A430-4	4 oz	4" Pull	Brass	4"	4 1/2"	1/2"	1 1/16"	1/2"	\$24.95	\$26.95	\$28.95	\$34.00
A430-6	5 oz	6" Pull	Brass	6"	6 1/2"	1/2"	1 1/16"	1/2"	\$38.95	\$44.95	\$46.95	\$52.00
A430-8	6 oz	8" Pull	Brass	8"	8 1/2"	1/2"	1 1/16"	1/2"	\$46.95	\$52.95	\$54.95	\$64.00
A430-12	8 oz	12" Pull	Brass	12"	12 1/2"	1/2"	1 1/16"	1/2"	\$64.95	\$69.95	\$74.95	\$85.00
A430-18	11 oz	18" Pull	Brass	18"	18 1/2"	1/2"	1 1/16"	1/2"	\$94.95	\$104.95	\$109.95	\$125.00
D430-12	1 lb	12" Appliance Pull	Brass	12"	12 5/8"	5/8"	1 3/4"	5/8"	\$129.95	\$139.95	\$144.95	\$160.00
D430-18	1.25 lb	18" Appliance Pull	Brass	18"	18 5/8"	5/8"	1 3/4"	5/8"	\$159.95	\$169.95	\$174.95	\$195.00

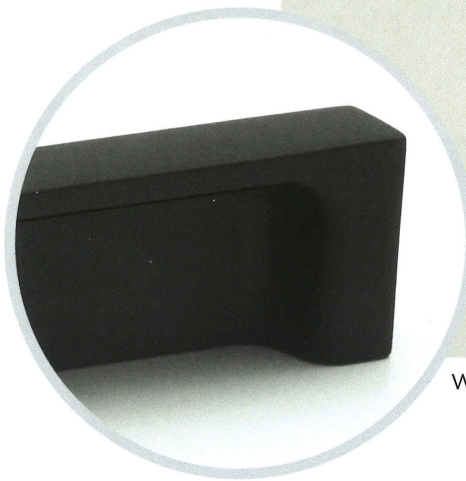
\* If your desired Alno, Inc. finish is not listed in Group 1, 2, or 3 please use Group 4 for Special finish pricing and see page #A for its special order form. Group 4 products are non-cancelable and non-returnable. Please allow 4-6 weeks for all special order finishes. Gold, Pewter, and Antique Nickel are custom finishes. Please contact customer service for pricing and lead-time for these (3) custom finishes.



**A440-15-SN**  
1 1/2" Pull



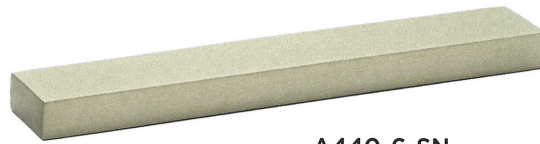
**A440-15-SN**  
1 1/2" Pull Underside



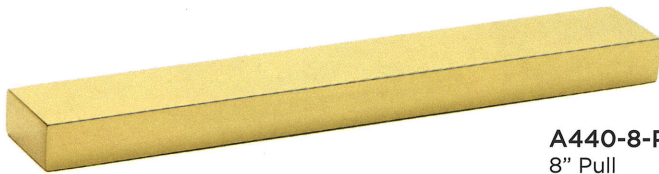
With Recessed Lip for Easy Gripping



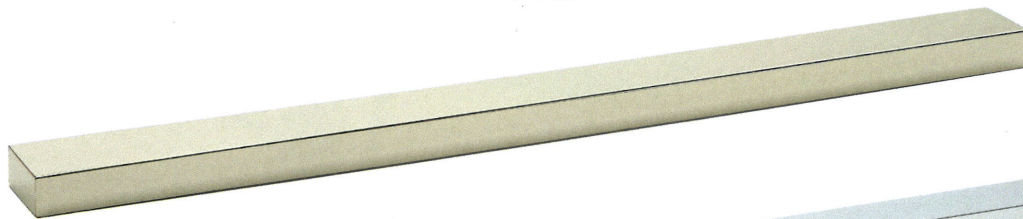
**A440-4-MB**  
4" Pull



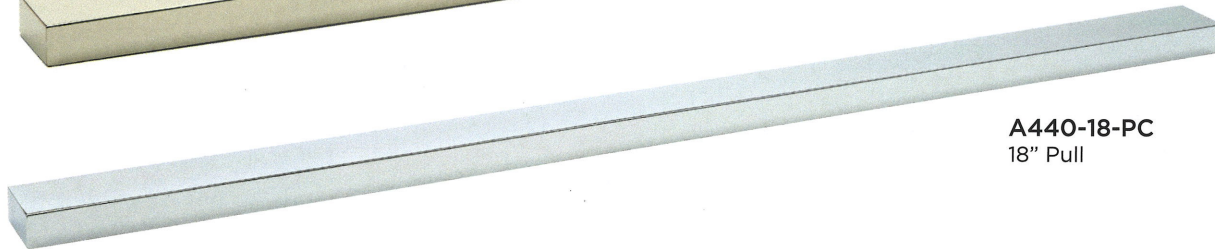
**A440-6-SN**  
6" Pull



**A440-8-PB**  
8" Pull



**A440-12-PN**  
12" Pull



**A440-18-PC**  
18" Pull

**AVAILABLE FINISHES**



TEMPO										List Price Group 1	List Price Group 2	List Price Group 3	List Price Group 4
Stock No.	Weight	Description	Material Base	CC	Length	Width	Proj.	Base Width		(PB, PB/NL, PC)	(PN)	(MB, SB, SN)	*SPECIAL FINISHES
A440-15	3 oz	1 1/2" Pull	Brass	1 1/2"	2"	1/2"	1"	1/2"		\$14.95	\$15.95	\$16.95	\$18.00
A440-4	5.5 oz	4" Pull	Brass	4"	4 1/2"	1/2"	1"	1/2"		\$22.95	\$24.95	\$25.95	\$29.00
A440-6	6.5 oz	6" Pull	Brass	6"	6 1/2"	1/2"	1"	1/2"		\$36.95	\$39.95	\$44.95	\$50.00
A440-8	8.5 oz	8" Pull	Brass	8"	8 1/2"	1/2"	1"	1/2"		\$46.95	\$49.95	\$54.95	\$60.00
A440-12	11.5 oz	12" Pull	Brass	12"	12 1/2"	1/2"	1"	1/2"		\$74.95	\$79.95	\$84.95	\$100.00
A440-18	1.1 lb	18" Pull	Brass	18"	18 1/2"	1/2"	1"	1/2"		\$129.95	\$139.95	\$144.95	\$160.00

\* If your desired Alno, Inc. finish is not listed in Group 1, 2, or 3 please use Group 4 for Special finish pricing and see page #A for its special order form. Group 4 products are non-cancelable and non-returnable. Please allow 4-6 weeks for all special order finishes. Gold, Pewter, and Antique Nickel are custom finishes. Please contact customer service for pricing and lead-time for these (3) custom finishes.

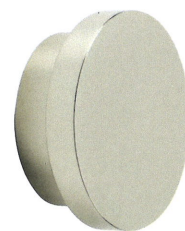
**A450-14-MB**  
1 3/8" Knob



**A450-38-SB**  
1 1/2" Knob



**A450-45-PN**  
1 3/4" Knob



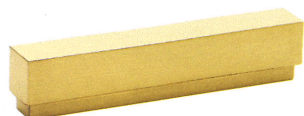
**AVAILABLE FINISHES**



REDONDO												
Stock No.	Weight	Description	Material Base	CC	Length	Width	Proj.	Base Width	List Price Group 1 (PB, PB/NL, PC)	List Price Group 2 (PN)	List Price Group 3 (MB, SB, SN)	List Price Group 4 *SPECIAL FINISHES
A450-14	3.5 oz	1 3/8" Knob	Brass		1 3/8"	1 3/8"	9/16"	1 1/8"	\$11.95	\$12.50	\$12.95	\$16.00
A450-38	4.5 oz	1 1/2" Knob	Brass		1 1/2"	1 1/2"	9/16"	1 5/16"	\$14.95	\$15.95	\$16.95	\$20.00
A450-45	6 oz	1 3/4" Knob	Brass		1 3/4"	1 3/4"	9/16"	1 1/2"	\$18.95	\$20.95	\$21.95	\$26.00



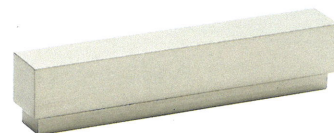
**A460-15-PC**  
1 1/2" Pull



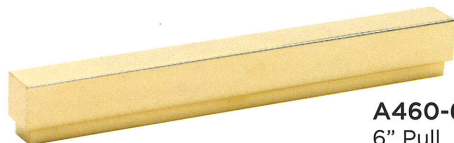
**A460-3-SB**  
3" Pull



**A460-35-MB**  
3 1/2" Pull



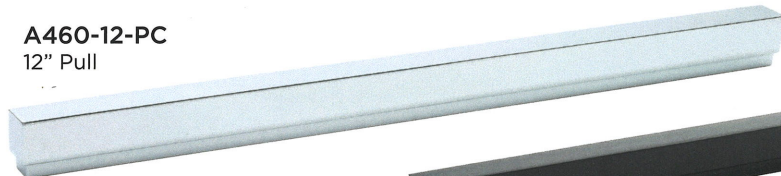
**A460-4-SN**  
4" Pull



**A460-6-PB**  
6" Pull



**A460-8-PN**  
8" Pull



**A460-12-PC**  
12" Pull



**A460-18-MB**  
18" Pull

**AVAILABLE FINISHES**



SIMPLICITY												
Stock No.	Weight	Description	Material Base	CC	Length	Width	Proj.	Base Width	List Price Group 1 (PB, PB/NL, PC)	List Price Group 2 (PN)	List Price Group 3 (MB, SB, SN)	List Price Group 4 *SPECIAL FINISHES
A460-15	5 oz	1 1/2" Pull	Brass	1 1/2"	2"	5/8"	7/8"	7/16"	\$14.95	\$15.95	\$16.95	\$20.00
A460-3	9 oz	3" Pull	Brass	3"	3 1/2"	5/8"	7/8"	7/16"	\$19.95	\$21.95	\$22.95	\$28.00
A460-35	10 oz	3 1/2" Pull	Brass	3 1/2"	4"	5/8"	7/8"	7/16"	\$24.95	\$26.95	\$27.95	\$34.00
A460-4	11 oz	4" Pull	Brass	4"	4 1/2"	5/8"	7/8"	7/16"	\$26.95	\$28.95	\$29.95	\$36.00
A460-6	1 lb	6" Pull	Brass	6"	6 1/2"	5/8"	7/8"	7/16"	\$44.95	\$48.95	\$49.95	\$58.00
A460-8	1.5 lb	8" Pull	Brass	8"	8 1/2"	5/8"	7/8"	7/16"	\$56.95	\$59.95	\$62.95	\$72.00
A460-12	2 lb	12" Pull	Brass	12"	12 1/2"	5/8"	7/8"	7/16"	\$99.95	\$112.95	\$114.95	\$134.00
A460-18	2.8 lb	18" Pull	Brass	18"	18 1/2"	5/8"	7/8"	7/16"	\$139.95	\$156.95	\$159.95	\$180.00

\* If your desired Alno, Inc. finish is not listed in Group 1, 2, or 3 please use Group 4 for Special finish pricing and see page #A for its special order form. Group 4 products are non-cancelable and non-returnable. Please allow 4-6 weeks for all special order finishes. Gold, Pewter, and Antique Nickel are custom finishes. Please contact customer service for pricing and lead-time for these (3) custom finishes.