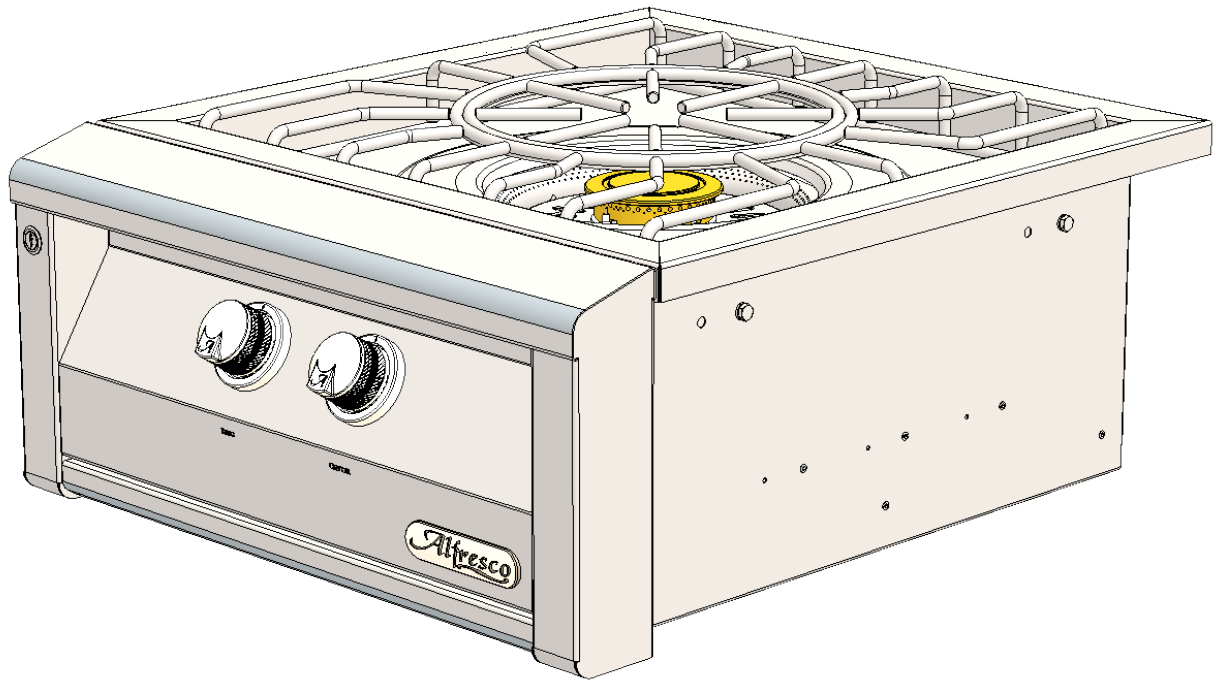


Alfresco™

Open Air Culinary Systems

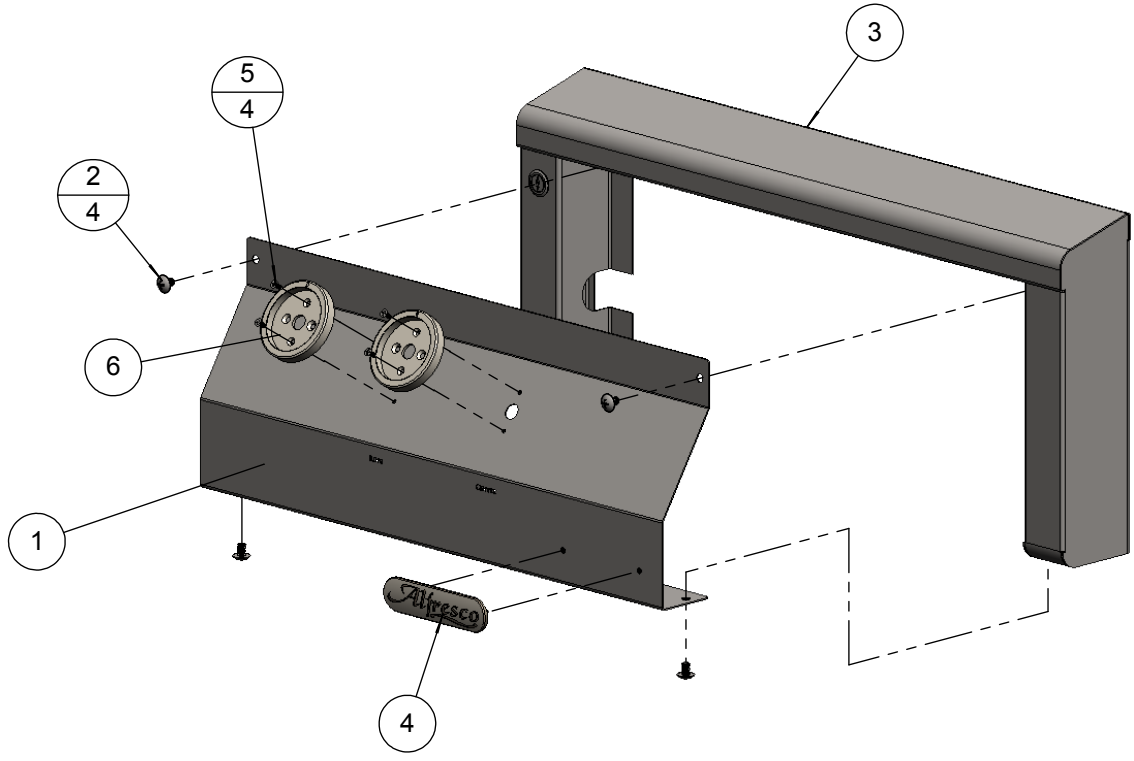


AXEVP

VERSAPOWER™ COOKING SYSTEM

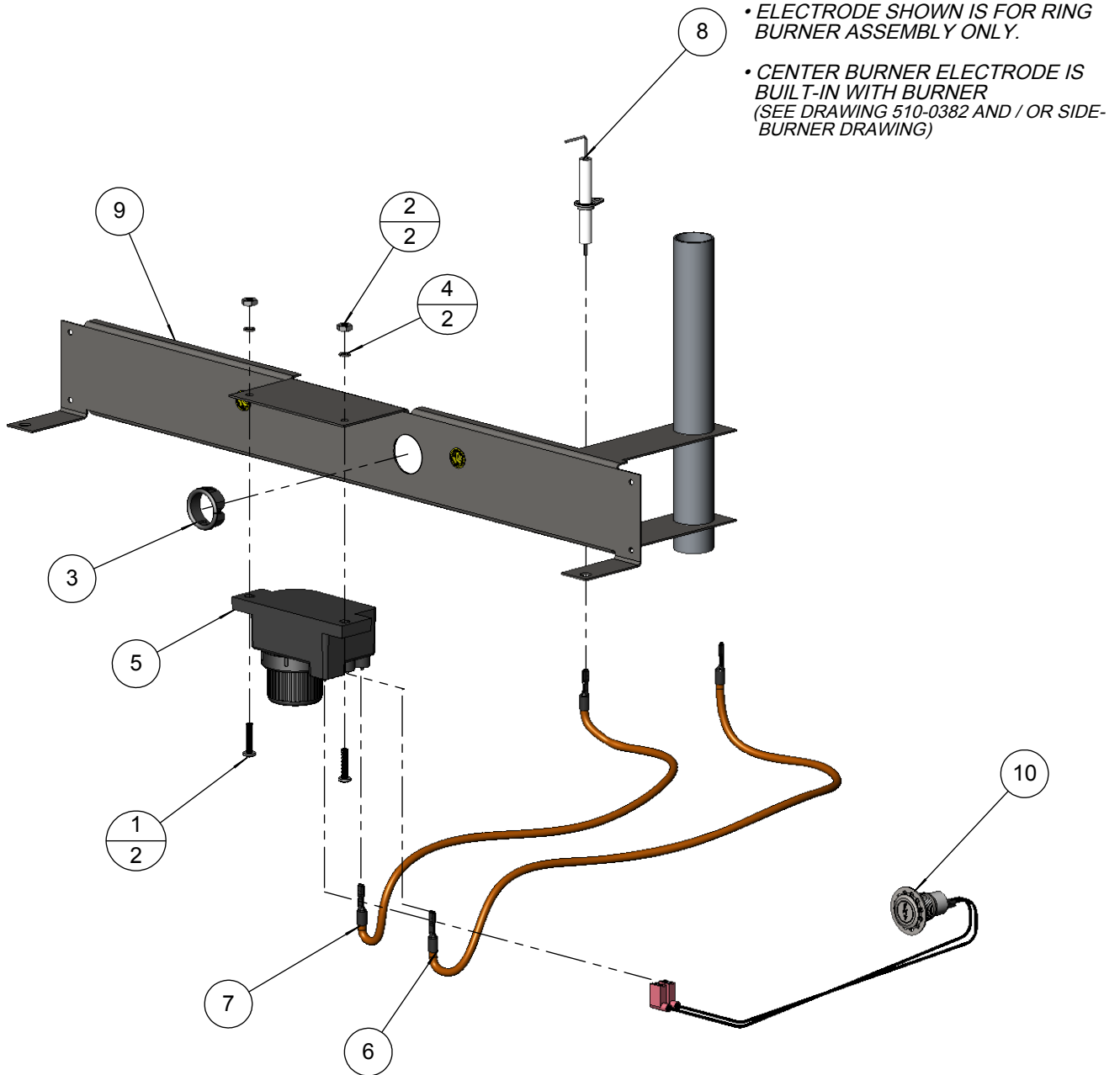
BILL OF MATERIAL

NO.	PART NUMBER	DESCRIPTION	QTY.
1	100-2627	AGVPC FRONT PANEL	1
2	200-0086	1/4-20 X 3/8 - TRUSS HEAD - PHILIPS SCREW	4
3	510-0938	AGVPC - FRONT ASSEMBLY- WELDED PARTS	1
4	290-0377	ALFRESCO RANGE LOGO	1
5	200-0348	SCREW 6-32 x 3/8 - THREAD CUTTER - FLAT HEAD PHILIPS	4
6	290-0388	ALFRESCO RANGE KNOB - BEZEL RING	2



BILL OF MATERIAL

NO.	PART NUMBER	DESCRIPTION	QTY.
1	200-0079	8-32 X 3/4 - PAN HEAD - PHILIPS SCREW	2
2	200-0080	8-32 - DOUBLE CHAMFER - HEX NUT	2
3	200-0081	BUSHING HEYCO OCB-1000 - PART # 2878	1
4	200-0200	WASHER - # 8 - LOCK SPRING - SS	2
5	210-0195	IGNITER MODULE - 2 POINTS (WITH CAP)	1
6	210-0216	AGVPC IGNITION WIRE (TO THE CENTER BURNER)	1
7	210-0216	AGVPC IGNITION WIRE (TO THE RING BURNER)	1
8	210-0498	ELECTRODE "L" SHAPED - AGVPC RING BURNER	1
9	510-0398	AGVPC - IGNITER ASSEMBLY ► WELDED PARTS	1
10	210-0586	SWITCH - IGNITION - MOMENTARY [ON]/OFF	1



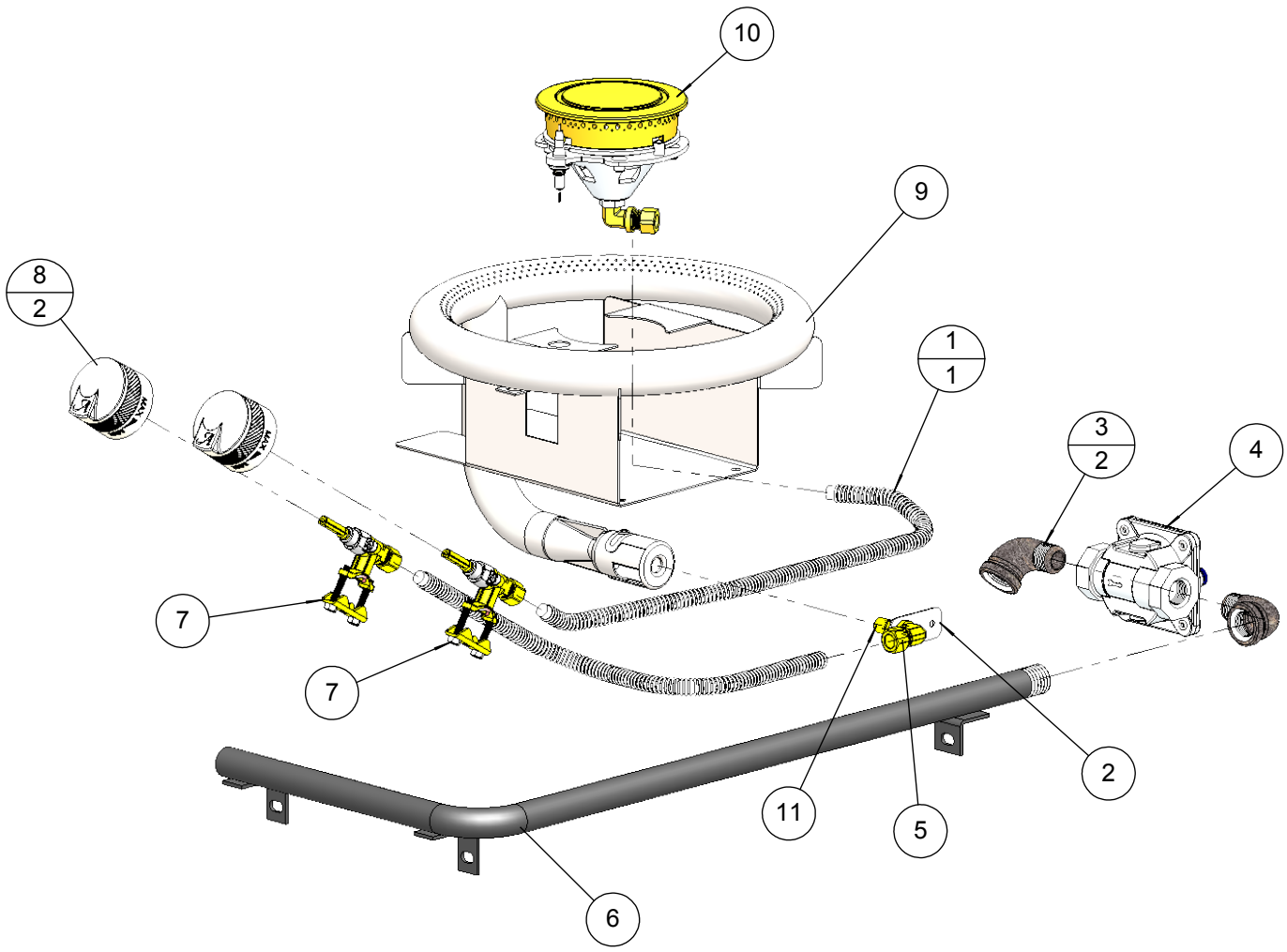
NOTE: ITEM 12 (ASSEMBLY 510-0398) IS SHOWN FOR ILLUSTRATION AND GENERAL ASSEMBLY PURPOSES ONLY. THIS ASSEMBLY IS ACTUALLY PART OF THE MAIN BODY ASSEMBLY 510-0378 SHOWN ON DRAWING 500-0175B

BILL OF MATERIAL

NO.	PART #	DESCRIPTION	QTY
1	100-0941	AGVPC - BURNER GAS LINE - 3/8" X 24" -SS	2
2	100-1067	ALX2- SMOKER & SZ™ ORIFICE BRACKET	1
3	200-0274	ELBOW 90° - CAST IRON - 1/2" FPT x 1/2" MPT	2
4	220-0280	REGULATOR GAS - MAXITROL RV48CL440002	1
5	220-0293	ELBOW 3/8-27 UNS x 3/8" COMP	1
6	220-0298	MANIFOLD - SIDE BURNER - DUAL VALVE	1
7	290-0042	GAS VALVE - SIDE BURNER - WITH INTERNAL ORIFICE	2
8	290-0433	ALFRESCO - KNOB - BBQ VALVE	2
9	510-0383	AGVPC - RING BURNER ASSEMBLY	1
10	SEE NOTE	AGVPC - CENTER BURNER ASSEMBLY	1
11	SEE NOTE	AGVPC PERIMETER BURNER NOZZLE ORIFICE	1

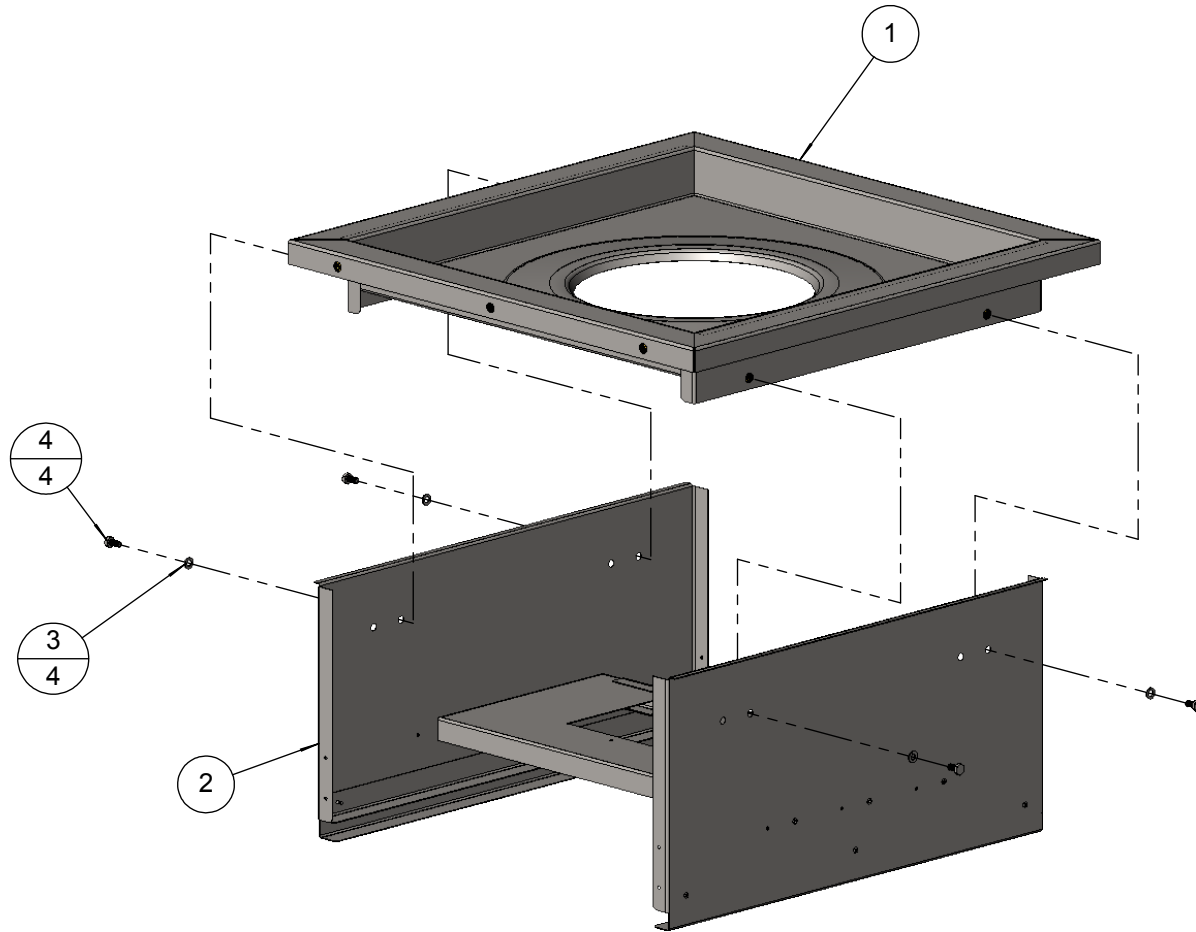
NOTE: THE FOLLOWING ITEMS WILL CHANGE PART NUMBERS DEPENDING UPON THE GAS SUPPLY, NATURAL GAS (NG) OR LIQUID PROPANE (LP)

ITEM N°	NG	LP
	PART N°	PART N°
10	290-0070	290-0071
11	220-0370	220-0290



BILL OF MATERIAL

NO.	PART NUMBER	DESCRIPTION	Default/QUANTITY.
1	510-0448	AGVPC - TOP BODY SUBASSEMBLY	1
2	510-0449	AGVPC - BOTTOM BODY SUBASSEMBLY	1
3	200-0087	WASHER - 1/4" SPRING LOCK- REGULAR - SS	4
4	200-0089	BOLT - HEX HEAD 1/4-20 x 1/2" L	4



NOTE: AGVPC UNITS BUILT AFTER 07/2009 HAVE BODIES BUILT WITH TWO ASSEMBLIES, TOP (510-0448), ITEM 1 AND BOTTOM (510-0449), ITEM 2, MAKING THE TOP OR BOTTOM ASSEMBLIES REPLACEABLE BY THEMSELVES.

FOR REPLACEMENT, VERIFY IF THE AGVPC UNIT'S BODY HAS SIDE MOUNTED BOLTS (ITEM 4) TO ORDER TOP OR BOTTOM ASSEMBLIES AS NEEDED.
 IF THE UNIT **DOES NOT** HAVE SIDE BOLTS, THEN THE ENTIRE ASSEMBLY 510-0378 MUST BE ORDERED FOR PROPER REPLACEMENT.

NOTE:

SIDE BURNER ASSEMBLIES ARE USED IN AGBQ AND ALX2 BARBEQUES, AGVPC UNIT (VERSAPOWER™) COOKING SYSTEMS AS WELL AS INDIVIDUAL UNITS (AGSB-2) BUT CAN ALSO BE ORDERED AS A WHOLE UNIT (KIT) FOR NATURAL GAS (NG) OR LIQUID PROPANE (LP).

COMPLETE KITS NUMBERS:

NATURAL GAS (NG) = 290-0070

LIQUID PROPANE (LP) = 290-0071

CAPS, ORIFICES AND ELECTRODES CAN BE INDIVIDUALLY REPLACED IF REQUIRED - SEE NUMBERS BELOW.

