

FOR OTHER DOOR THICKNESS, TEAR OFF AND PLACE ON CENTER LINE OF DOOR EDGE

THRU-BOLT HOLES
3/8" DIA.
BOTH SIDES

TECH SUPPORT: 1-800-ALA-LOCK

TOP

7 31/32"

3/4" DIA. WIRE HOLE (BOTH SIDES)
FOR NON-FIRE RATED DOORS ONLY

WIRE HOLE
3/4" DIA.
BOTH SIDES
FOR FIRE RATED DOORS

6 19/32"

1 3/4"

5 23/32"

THRU-BOLT HOLES
3/8" DIA.
BOTH SIDES

4 45/64"

CYLINDER HOLE
1 1/4" DIA.
OUTSIDE ONLY

2 3/4"
BACKSET

3 23/32"

FOR DB MODELS ONLY
TURNPIECE HOLE
1/2" DIA.
INSIDE ONLY

CENTER LINE OF LOCK

2 7/16"

clearance
for latch
3/4" deep

1 5/8"

THRU-BOLT HOLES
3/8" DIA.
BOTH SIDES

27/32"

LEVER HOLE
1 1/4" DIA.
BOTH SIDES

HORIZONTAL CENTER LINE OF LEVER

27/32"

THRU-BOLT HOLES
3/8" DIA.
BOTH SIDES

BOTTOM

VERTICAL CENTER LINE OF BACKSET

DRILL 15/16" TO
1" DIAM.
4 1/4" DEEP

USA MORTISE DOOR TEMPLATE

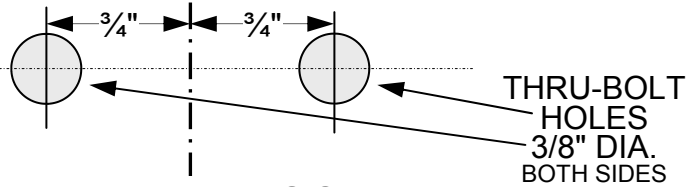
© 2008 ALARM LOCK
W11003C 8/08



TOP

7 31/32"

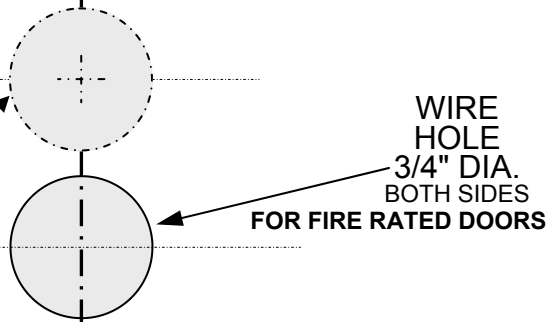
TECH SUPPORT: 1-800-ALA-LOCK



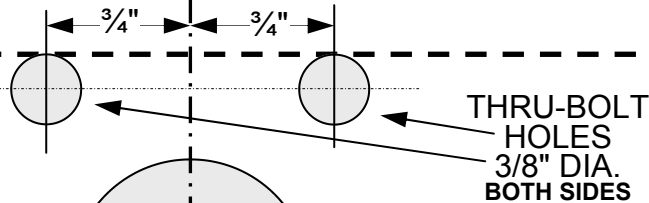
FOR OTHER DOOR THICKNESS, TEAR OFF AND PLACE ON CENTER LINE OF DOOR EDGE

3/4" DIA. WIRE HOLE (BOTH SIDES)
FOR NON-FIRE RATED DOORS ONLY

6 19/32"



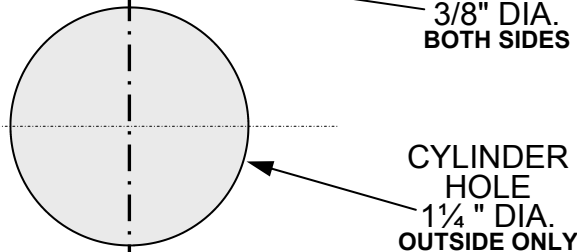
5 23/32"



4 45/64"

THRU-BOLT HOLES
3/8" DIA.
BOTH SIDES

3 23/32"



2 3/4"
BACKSET

2 7/16"

1 5/8"

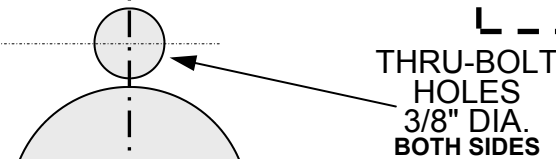
FOR DB MODELS ONLY
TURNPIECE HOLE
1/2" DIA.
INSIDE ONLY

CENTER LINE OF LOCK

VERTICAL CENTER LINE
OF DOOR EDGE

clearance
for latch
3/4" deep

27/32"



HORIZONTAL CENTER LINE OF LEVER

27/32"

LEVER HOLE
1 1/4" DIA.
BOTH SIDES

BOTTOM

THRU-BOLT HOLES
3/8" DIA.
BOTH SIDES

VERTICAL CENTER LINE OF BACKSET

DRILL 15/16" TO
1" DIAM.
4/4" DEEP

