

**MODEL  
NUMBER:**

**ALL200**



Patent #5105349 & 7410150 B1

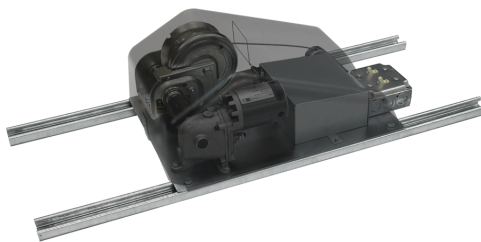
The ALL200 is a 'residential grade' motorized winch for the raising and lowering of a light fixture. This 'standard mount' lift is designed to be installed in accessible locations, directly above the fixture. Please see page 30 for 'standard mount' vs 'remote mount' diagram.

**Specifications**

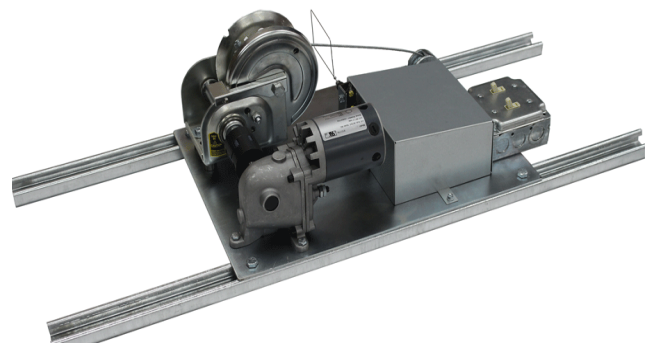
- Maximum Lifting Capacity.....200 lbs.
- Application.....Residential (Plastic dust cover and Romex)
- Voltage.....110V
- Mounting Location.....Standard Mount  
Directly above fixture only
- Winch Cable Length.....35 ft.
- Light Wattage Capacity.....1 x 15 amp circuit - 1650 watts
- Controller.....Keyswitch
- Controller Wire.....50 ft.
- Dimensions of unit.....14" wide x 19" long x 9" high  
Mounted on two 36" channel struts
- Shipping Weight.....47 lbs.

**Upgrades**

- Controller.....Smart-Lift (see page 27)
- Winch Cable Length.....65 ft.  
90 ft.  
120 ft.
- Light Wattage Capacity.....1 x 20 amp circuit - 2200 watts  
2 x 15 amp circuits - 3300 watts
- Controller Wire.....100 ft.



**ALADDIN<sup>®</sup>**



ALL200 SPEC SHEET