

**MODEL
NUMBER:**

ALL700



Patent #5105349 & 7410150 B1

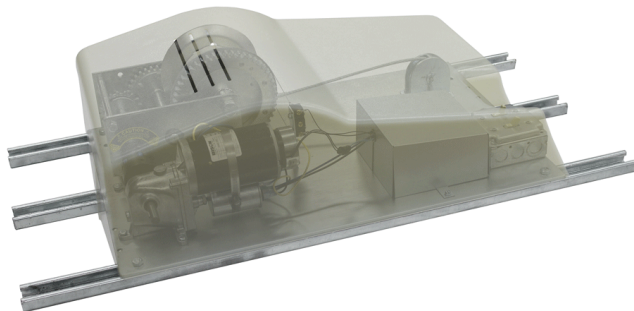
The ALL700 is a 'residential grade' motorized winch for the raising and lowering of a light fixture. This 'standard mount' lift is designed to be installed in accessible locations, directly above the fixture. Please see page 30 for 'standard mount' vs 'remote mount' diagram.

Specifications

| | |
|-------------------------------|--|
| Maximum Lifting Capacity..... | 700 lbs. |
| Application..... | Residential (Plastic dust cover and Romex) |
| Voltage..... | 110V |
| Mounting Location..... | Standard Mount Directly above fixture only |
| Winch Cable Length..... | 35 ft. |
| Light Wattage Capacity..... | 1 x 20 amp circuit - 2200 watts |
| Controller..... | Smart-Lift |
| Controller Wire..... | 50 ft. |
| Dimensions of unit..... | 18" wide x 27.5" long x 9" high Mounted on three 38" channel struts |
| Shipping Weight..... | 96 lbs. |

Upgrades

| | |
|-----------------------------|----------------------------------|
| Winch Cable Length..... | 65 ft. 90 ft. 120 ft. |
| Light Wattage Capacity..... | 2 x 15 amp circuits - 3300 watts |
| Controller Wire..... | 100 ft. |



ALADDIN[®]

