

**MODEL  
NUMBER:**

**ALL1000**



Patent #5105349 & 7410150 B1

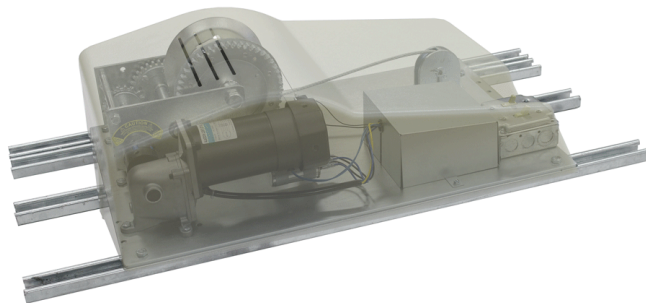
The ALL1000 is a 'residential grade' motorized winch for the raising and lowering of a light fixture. This 'standard mount' lift is designed to be installed in accessible locations, directly above the fixture. Please see page 30 for 'standard mount' vs 'remote mount' diagram.

**Specifications**

Maximum Lifting Capacity.....	1000 lbs.
Application.....	Residential (Plastic dust cover and Romex)
Voltage.....	110V
Mounting Location.....	Standard Mount Directly above fixture only
Winch Cable Length.....	35 ft.
Light Wattage Capacity.....	1 x 20 amp circuit - 2200 watts
Controller.....	Smart-Lift
Controller Wire.....	50 ft.
Dimensions of unit.....	18" wide x 27.5" long x 9" high Mounted on four 38" channel struts
Shipping Weight.....	98 lbs.

**Upgrades**

Winch Cable Length.....	65 ft. 90 ft. 120 ft.
Light Wattage Capacity.....	2 x 15 amp circuits - 3300 watts
Controller Wire.....	100 ft.



**ALADDIN®**

