

**MODEL
NUMBER:**

ALL700RM



Patent #5105349 & 7410150 B1

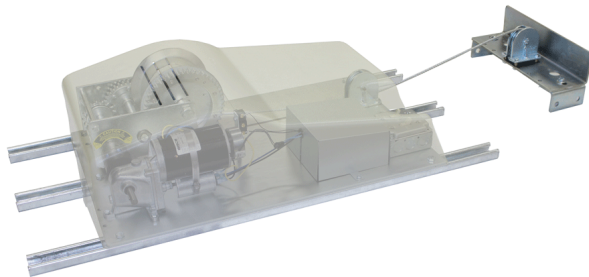
The ALL700RM is a 'residential grade' motorized winch for the raising and lowering of a light fixture. This 'remote mount' lift is designed to be installed in an offset location when there is limited access directly above the fixture. Please see page 30 for 'standard mount' vs 'remote mount' diagram.

Specifications

Maximum Lifting Capacity.....700 lbs.
 Application.....Residential (Plastic dust cover and Romex)
 Voltage.....110V
 Mounting Location.....Remote Mount
 Motor offset up to 25 ft.
 Winch Cable Length.....65 ft.
 Light Wattage Capacity.....1 x 20 amp circuit - 2200 watts
 Controller.....Smart-Lift
 Controller Wire.....50 ft.
 Dimensions of unit.....18" wide x 27.5" long x 10" high
 Mounted on three 38" channel struts
 Shipping Weight.....111 lbs.

Upgrades

Winch Cable Length.....90 ft.
 120 ft.
 Light Wattage Capacity.....2 x 15 amp circuits - 3300 watts
 Controller Wire.....100 ft.



ALADDIN®

