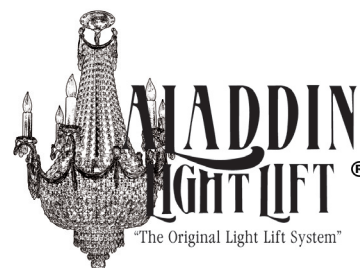


**MODEL
NUMBER:**

ALL200RM



Patent #5105349 & 7410150 B1

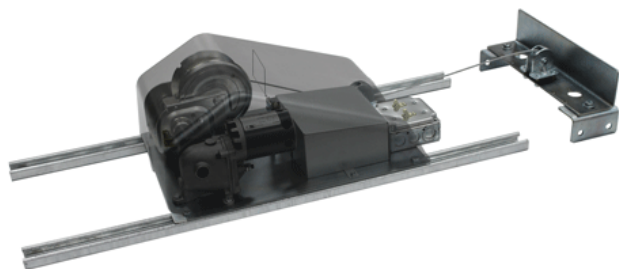
The ALL200RM is a 'residential grade' motorized winch for the raising and lowering of a light fixture. This 'remote mount' lift is designed to be installed in an offset location when there is limited access directly above the fixture. Please see page 30 for 'standard mount' vs 'remote mount' diagram.

Specifications

Maximum Lifting Capacity.....	200 lbs.
Application.....	Residential (Plastic dust cover and Romex)
Voltage.....	110V
Mounting Location.....	Remote Mount
	Motor offset up to 25 ft.
Winch Cable Length.....	65 ft.
Light Wattage Capacity.....	1 x 15 amp circuit - 1650 watts
Controller.....	Keyswitch
Controller Wire.....	50 ft.
Dimensions of unit.....	14" wide x 18" long x 9" high
	Mounted on two 36" channel struts
Shipping Weight.....	57 lbs.

Upgrades

Controller.....	Smart-Lift (see page 27)
Winch Cable Length.....	90 ft.
	120 ft.
Light Wattage Capacity.....	1 x 20 amp circuit - 2200 watts
	2 x 15 amp circuits - 3300 watts
Controller Wire.....	100 ft.



ALADDIN®

