



LOCATION		DATE
PREPARED BY		QUANTITY
COMMENTS		FIXTURE TYPE
CATALOG NUMBER		

Gates LED Vanity GATV Series

Features

Sleek contemporary styling with die-cast metal backplate and ornamental accents. Horizontal or vertical mounting. Provides lighting in residential, commercial and hospitality applications. This fixture mounts to a standard junction box (not included).

Construction

Back plate is die-formed of 22-gauge steel. Standard mounting holes and hardware are included. Power supply connections must be made inside a junction box (not included).

Finish

Black, Satin Brass or Satin Nickel finish.

Diffuser

White acrylic diffuser.

Electrical

Input 120 VAC 60 HZ.
Compatible with residential (TRIAC/ELV) dimmers.

LED

Integrated LED modules capable of producing:
20W = 1340 delivered lumens
Adjustable 2700K, 3000K, 3500K, 4000K, 5000K (CCT).
Rated for 50,000 Hrs., 90 CRI.

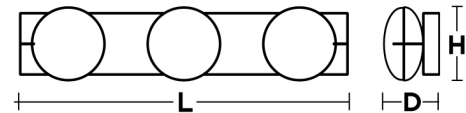
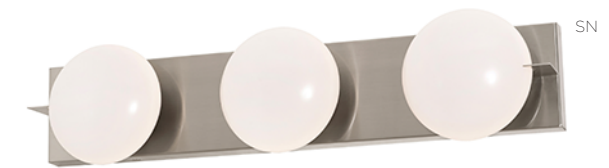
Certification

All fixtures are cETLus listed for indoor damp locations.
Title 24/JA8 Compliant

Warranty

Limited warranty: This fixture is free from defects in materials and workmanship for a period of 5 years from date of purchase.

Specifications and dimensions
subject to change without notice.



Ordering Information:

Black	Satin Brass	Satin Nickel	LED	Delivered Lumens	Adjustable CCT	L	H	D
GATV2406LAJD1BK	GATV2406LAJD1SB	GATV2406LAJD1SN	20W	1340	2700K/3000K/3500K/4000K/5000K	24"	5-1/2"	4-1/8"