



LOCATION		DATE
PREPARED BY		QUANTITY
COMMENTS		FIXTURE TYPE
CATALOG NUMBER		

Ideal LED Sconce IDS Series

Features

Simple modern curved white glass with metal ends. Ideal use in hallways, entrances or anywhere general lighting is needed. Provides lighting in residential, commercial and hospitality applications. Meets ADA requirements. Fixture mounts standard to junction box (not included).



Construction

Back plate is die-formed of 22-gauge steel. Standard mounting holes and hardware are included. Power supply connections must be made inside a junction box (not included).

Finish

Black or Satin Nickel finish.

Diffuser

Blow formed matte white glass.

Electrical

Input 120-277 VAC 60 HZ.
Compatible with residential (TRIAC/ELV) and commercial (0-10V) dimmers.
TRIAC and ELV dimming only at 120 VAC.

LED

Integrated LED modules capable of producing:
15W = 1000 delivered lumens
Selectable 2700K, 3000K, 3500K, 4000K, 5000K (CCT).
Rated for 50,000 Hrs., 90 CRI.

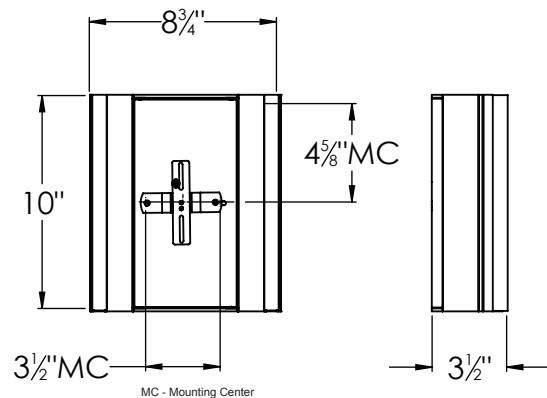
Certification

All fixtures are cETLus listed for indoor damp locations.
ADA compliant
Title 24/JA8 compliant

Warranty

Limited warranty: This fixture is free from defects in materials and workmanship for a period of 5 years from date of purchase.

**Specifications and dimensions
subject to change without notice.**



Ordering Information:

Black	Satin Nickel	LED	Delivered Lumens	Adjustable CCT	H	W	D
IDS0910LAJUDBK	IDS0910LAJUDSN	15W	1000	2700K/3000K/3500K/4000K/5000K	10"	8-3/4"	3-1/2"