



LOCATION		DATE
PREPARED BY		QUANTITY
COMMENTS		FIXTURE TYPE
CATALOG NUMBER		

## Avenue LED Outdoor Flush Mount AUF Series

### Features

This Avenue LED ceiling fixture is highly decorative style adding beauty and light to any room or spaces. 3 in 1 color temperature adjustable option. Ideal use for general lighting in indoor or outdoor residential, commercial, and hospitality applications. Fixture can be mounted to a standard junction box (not included) on a wall or ceiling.



### Construction

Stainless steel housing with aluminum die-cast trim and painted in weather resistant powder coating. Back pan is made from 12 gauge stamped aluminum material with matching powder coat finish. Power supply connections must be made inside a junction box (not included).

### Finish

Available in Textured Grey or Textured Bronze finish.

### Diffuser

Diffuser is made of 0.125" thick standard white acrylic.

### Electrical

Input 120-277VAC / 60Hz.  
Compatible with 0-10V dimmers.  
Minimum starting temp -4° F/-20° C

### LED

Integrated LED modules capable of producing:  
21W = 1600 source lumens, 745 delivered lumens  
29W = 2800 source lumens, 1190 delivered lumens  
Adjustable Choice 3000K, 3500K, 4000K (CCT).  
Rated for 50,000 Hrs. 90 CRI.

### Certification

All fixtures are cETLus listed for outdoor wet locations.  
ADA  
Title 24/JA8 Compliant

### Warranty

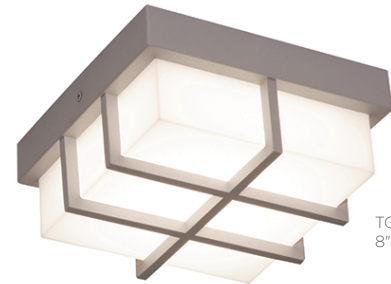
Limited warranty: This fixture is free from defects in materials and workmanship for a period of 5 years from date-of-purchase.

**Specifications and dimensions**  
subject to change without notice.

### Ordering Information:

Textured Grey	LED	Source Lumens	Delivered Lumens	Adjustable CCT	H	W	D
AUF0816LAJD2TG	21W	1600	745	3000K/3500K/4000K	8"	8"	3-3/4"
AUF1228LAJD2TG	29W	2800	1190	3000K/3500K/4000K	12"	12"	3-3/4"

Textured Bronze	LED	Source Lumens	Delivered Lumens	Adjustable CCT	H	W	D
AUF0816LAJD2BZ	21W	1600	745	3000K/3500K/4000K	8"	8"	3-3/4"
AUF1228LAJD2BZ	29W	2800	1190	3000K/3500K/4000K	12"	12"	3-3/4"



TG  
8"



BZ  
12"

