



LOCATION		DATE
PREPARED BY		QUANTITY
COMMENTS		FIXTURE TYPE
CATALOG NUMBER		

Hollywood LED Vanity HLWV Series

Features

This contemporary clean line design provides a dramatic look with bevel housing. Three and four light option. Fixture mounts horizontally to standard junction box (not included).

Construction

The frame assembly is mounted to a 20-gauge stamped steel backplate. Power supply connections must be made inside a junction box (not included).

Finish

Stamped metal components are painted satin nickel.

Diffuser

Individual diffusers are white acrylic and are non-removable.

Electrical

This unit is direct wired with constant current low voltage electronic driver to 120 VAC/60Hz input voltage. Driver is NON-dimmable.

Lamping

Fixture includes LED modules capable of producing:
 3-Light 24" - 20W, 1700 source lumens
 4-Light 24" - 28W, 2200 source lumens
 3000K (CCT). Rated for 50,000 hours, 80 CRI

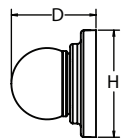
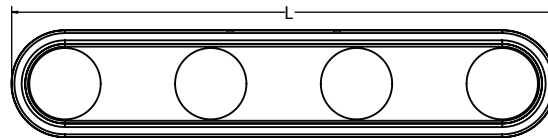
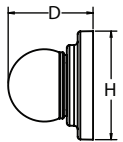
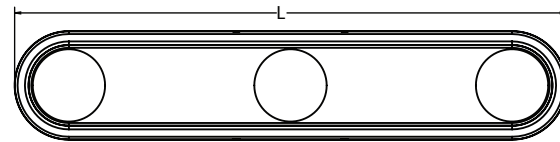
Certification

All fixtures are cETLus listed for damp locations. ENERGY STAR® Qualified.

Warranty

Limited warranty: This fixture is free from defects in materials and workmanship for a period of 5 years from date of purchase.

**Specifications and dimensions
subject to change without notice.**



Ordering Information:

Satin Nickel	LED	Source Lumens	CCT	L	H	D
HLWV240417L30ENSN (3-Light)	20W	1700	3000K	24"	4-3/4"	3-5/8"
HLWV240422L30ENSN (4-Light)	28W	2200	3000K	24"	4-3/4"	3-5/8"