

Model No :: **50032LEDD-BS/FST**
 Name :: **Vision**



Project Name :: _____
 Location :: _____
 Type :: _____
 Quantity :: _____
 Notes :: _____

Product Information

Product ID :: 50032
 UPC Code :: 641594175127
 Mounting Type :: Ceiling
 Finish :: Brushed Steel (BS)
 Diffuser :: Frosted (FST)
 Alt. Finishes :: N/A
 Alt. Diffusers :: N/A

Product Dimensions

Fixture		Canopy	
Length ::	15.75"	Length ::	12"
Width ::	15.75"	Width ::	11.75"
Diameter ::	N/A	Diameter ::	N/A
Extension ::	N/A	Height ::	1.25"
Height ::	3.25"		
Overall Height ::	N/A Max.		



Technical Specifications

Qualifications

Location Rating :: Damp
 Certification :: cULus
 IES File :: No
 JA8 Compliant :: Yes
 Title 20 Compliant :: N/A
 Energy Star :: Yes
 ADA Compliant :: No
 Marine Grade :: No
 Emergency Lighting :: No
 Warranty :: 5 Year Limited

Specifications

Frame Material :: Metal
 Diffuser Material :: Glass
 Voltage :: 120v
 Lamping Type :: Dedicated LED
 Lamping Base :: SSL
 Lamp Quantity :: 1
 Lamp Wattage :: 30 W
 Total Wattage :: 30 W
 Lamps Included :: Yes
 J-Box Type :: Standard

Photometrics

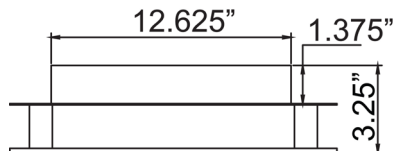
CCT :: 3000
 CRI :: 90
 Wattage :: 30 W
 Nominal Lumens :: 2600
 Delivered Lumens :: 1810

Recommended Dimmers

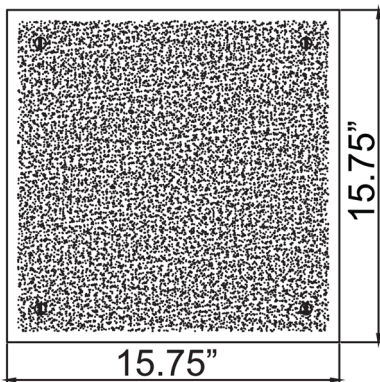
(ELV) LEGRAND Paddle ADPD453LM2; (ELV) LEVITON Renoir II AWSMT-EA; (ELV) LUTRON Diva DVELV-300P; (ELV) LUTRON Diva DVELV-303P; (ELV) LUTRON Skylark SELV-300P; (TRIAC) LUTRON Diva DV-600P

Custom Options :: Alternate Color Temperature Available, Available In Warm Dimming, Available in 0-10V Dim, Available in 277V, Available in Battery Backup; **Additional Items** :: N/A

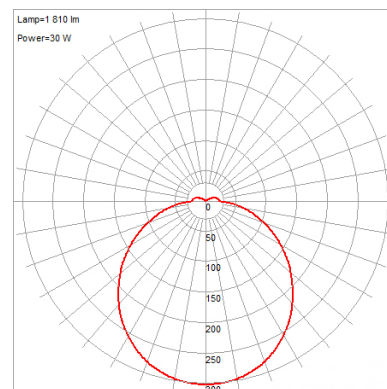
Line Drawing #1



Line Drawing #2



IES File



Toll Free 800-828-5483 or www.AccessLighting.com

14410 Myford Road, Irvine, CA 92606

The information provided is subject to change without notice. ©2018 Access Lighting Corporation. All Rights Reserved
 Rev. 201901 Filename:: 50032LEDD-BS_FST.pdf

