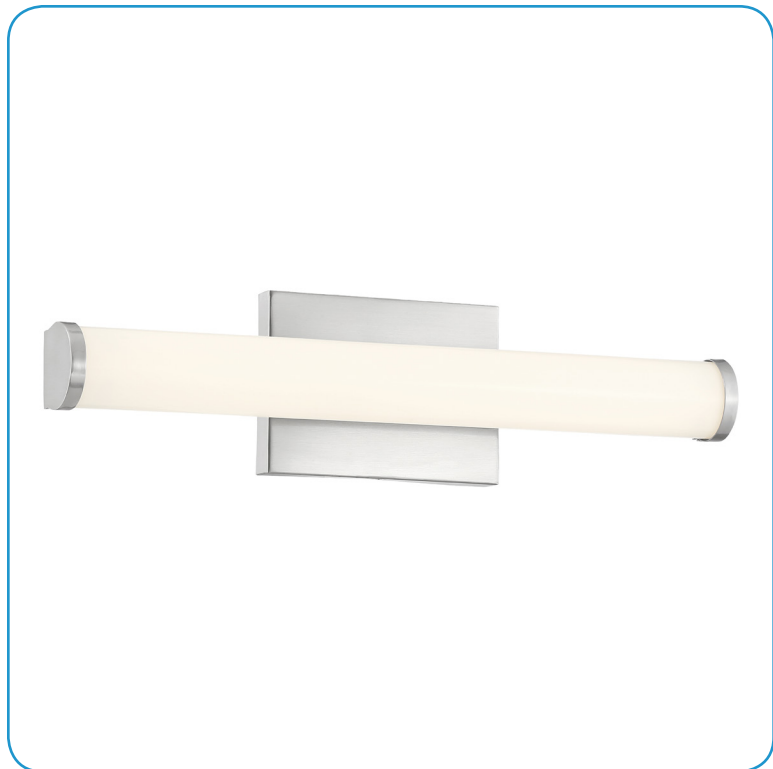


Model No :: **62516LEDD-BS/ACR**  
 Name :: **Arc**



Project Name :: \_\_\_\_\_  
 Location :: \_\_\_\_\_  
 Type :: \_\_\_\_\_  
 Quantity :: \_\_\_\_\_  
 Notes :: \_\_\_\_\_

**Product Information**

Product ID :: 62516  
 UPC Code :: 641594229066  
 Mounting Type :: Wall  
 Finish :: Brushed Steel (BS)  
 Diffuser :: Acrylic Lens (ACR)  
 Alt. Finishes :: N/A  
 Alt. Diffusers :: N/A

**Product Dimensions**

<b>Fixture</b>		<b>Canopy</b>
Length ::	N/A	Length :: 0.75"
Width ::	18"	Width :: 6.25"
Diameter ::	N/A	Diameter :: N/A
Extension ::	2.625"	Height :: 4.5"
Height ::	4.5"	
Overall Height ::	N/A Max.	



**Technical Specifications**

**Qualifications**

Location Rating :: Damp  
 Certification :: cETLus  
 IES File :: No  
 JA8 Compliant :: No  
 Title 20 Compliant :: N/A  
 Energy Star :: No  
 ADA Compliant :: Yes  
 Marine Grade :: No  
 Emergency Lighting :: No  
 Warranty :: 5 Year Limited

**Specifications**

Frame Material :: Metal  
 Diffuser Material :: Acrylic  
 Voltage :: 120v  
 Lamping Type :: Dedicated LED  
 Lamping Base :: SSL  
 Lamp Quantity :: 1  
 Lamp Wattage :: 20 W  
 Total Wattage :: 20 W  
 Lamps Included :: Yes  
 J-Box Type :: Standard

**Photometrics**

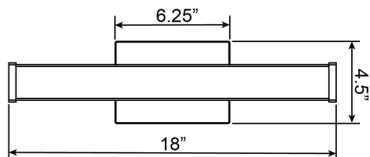
CCT :: 3000  
 CRI :: 90  
 Wattage :: 20 W  
 Nominal Lumens :: 1800  
 Delivered Lumens :: N/A

**Recommended Dimmers**

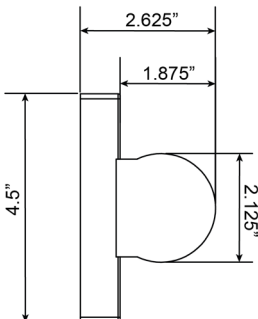
(ELV) LUTRON Caseta PD - 6WCL; (ELV) LUTRON Maestro CL MACL-153M; (ELV) LUTRON Maestro MRF2-6CL; (TRIAC) LUTRON Diva DVCL-153P

Custom Options :: N/A; Additional Items :: N/A

**Line Drawing #1**



**Line Drawing #2**



**IES File**

Image Not Available

**Toll Free 800-828-5483 or www.AccessLighting.com**

14410 Myford Road, Irvine, CA 92606  
 The information provided is subject to change without notice. ©2018 Access Lighting Corporation. All Rights Reserved  
 Rev. 201901 Filename:: 62516LEDD-BS\_ACR.pdf

