

INSTALLATION INSTRUCTION

For Outdoor Lantern (Rev. 06/04/2012)

READ AND SAVE THESE INSTRUCTIONS

WARNING! SHUT POWER OFF AT FUSE OR CIRCUIT BREAKER.

AVERTISSEMENT! COUPER LE COURANT AU NIVEAU DES FUSIBLES OU DU DISJONCTEUR.

1. Shut off power at the circuit breaker and remove old fixture including mounting hardware.
2. Carefully unpack your new fixture and lay out all the parts on a clear area. Take care not to misplace any small parts necessary for installation.
3. Pull black and white wires out of electrical outlet box.
4. Mount circular strap to outlet box.(Fig. 1)
5. Connect electrical wires as shown making sure all wire connectors are secured. If your outlet has a ground wire (green or bare copper),connect the fixture ground wire to it. If not,connect fixture ground wire to the green screw on circular strap. After wires are connected, tuck them carefully inside junction box.(Fig. 2)
6. To prevent moisture from entering the outlet box and causing a short,use clear caulking (ie. Indoor/Outdoor Silicone Sealant) to outline the outside of fixture backplate where it meets the wall leaving a space at bottom to allow moisture a means to escape. (Fig .3)
7. Align fixture to stud screws on circular strap and attach fixture with knurled knobs.(Fig. 1)
8. NOTE: Install the light bulbs in accordance with the fixtures specification, **(DO NOT EXCEED THE MAXIMUM WATTAGE RATING!)** **(NE PAS DEPASSER LA PUISSANCE NOMINALE MAXIMALE!)**

Your installation is now complete. Return the power to the junction box and test the fixture.

Note: Illustration (Fig. 1) on this manual is for installation purposes only. It may or may not be identical to the fixture purchased.

CAUTION-RISK OF FIRE.CONSULT A QUALIFIED ELECTRICIAN TO ENSURE CORRECT BRANCH CIRCUIT CONDUCTOR.

Fig. 1

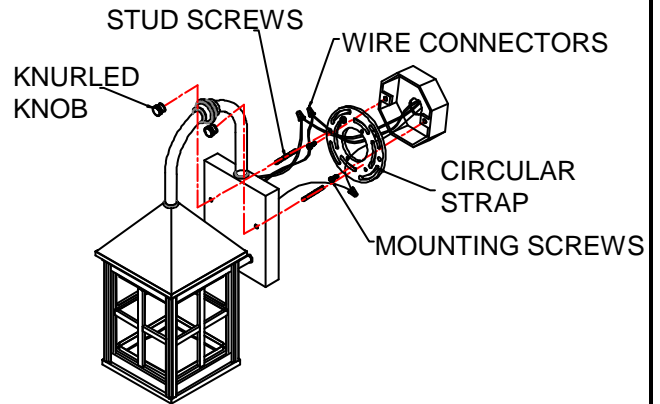


Fig. 2

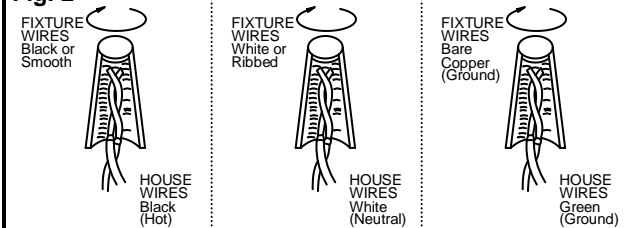
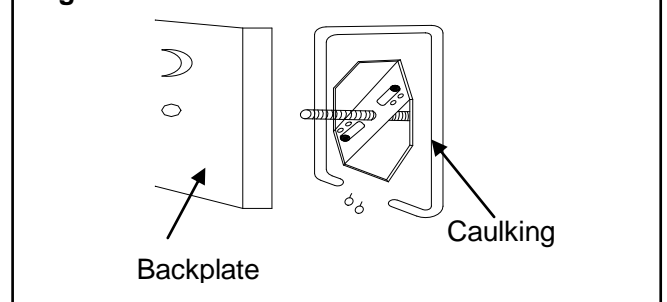


Fig.3



MIN 90°C SUPPLY CONDUCTORS.

