

# Lexington (Compact Fluorescent)

700WSLEX\_-CF 1.0



## WALL COLLECTION

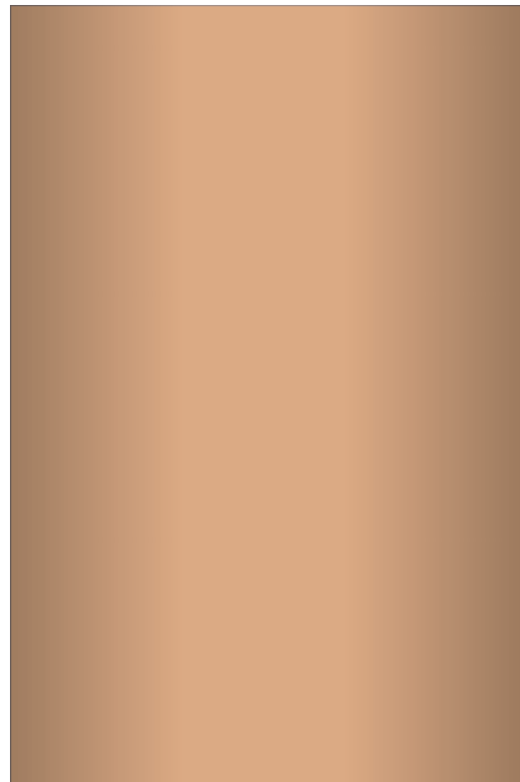
### GENERAL PRODUCT INFORMATION:



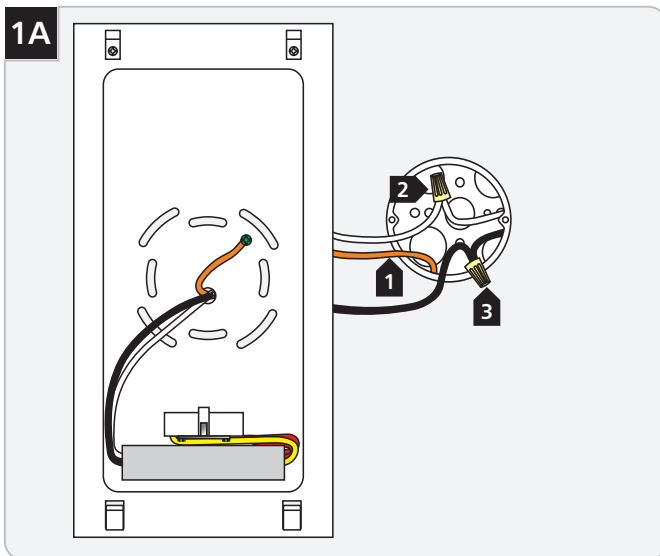
This product is suitable for damp locations.

This product can mount to either a 4" square electrical box with round plaster ring or an octagon electrical box.

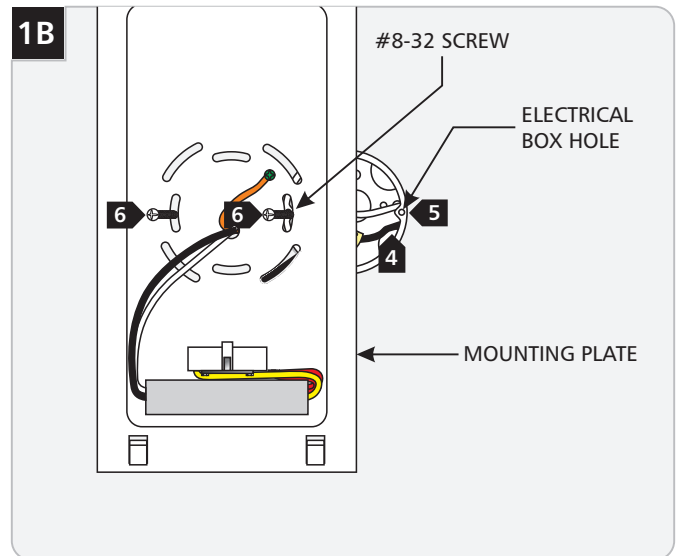
This product is designed to be mounted vertically, as shown.



## Mount the Sconce

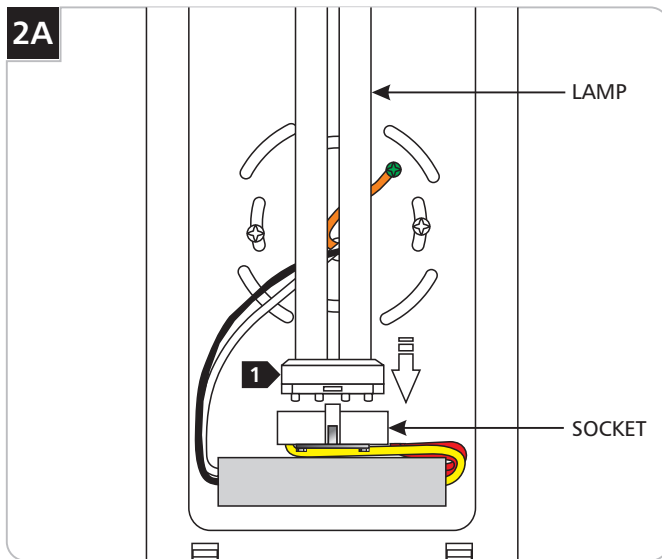


- 1** Connect the braided copper wire to a suitable ground according to local electrical codes.
- 2** Connect the white fixture wire to the neutral power line wire with a wire nut.
- 3** Connect the black fixture wire to the hot power line wire with a wire nut.



- 4** Properly place all wires and wire nut connections into the electrical box.
- 5** Line up two mounting plate slots with the two electrical box holes.
- 6** Level the mounting plate vertically and secure it to the electrical box with the two #8-32 screws.

## Install the Lamp



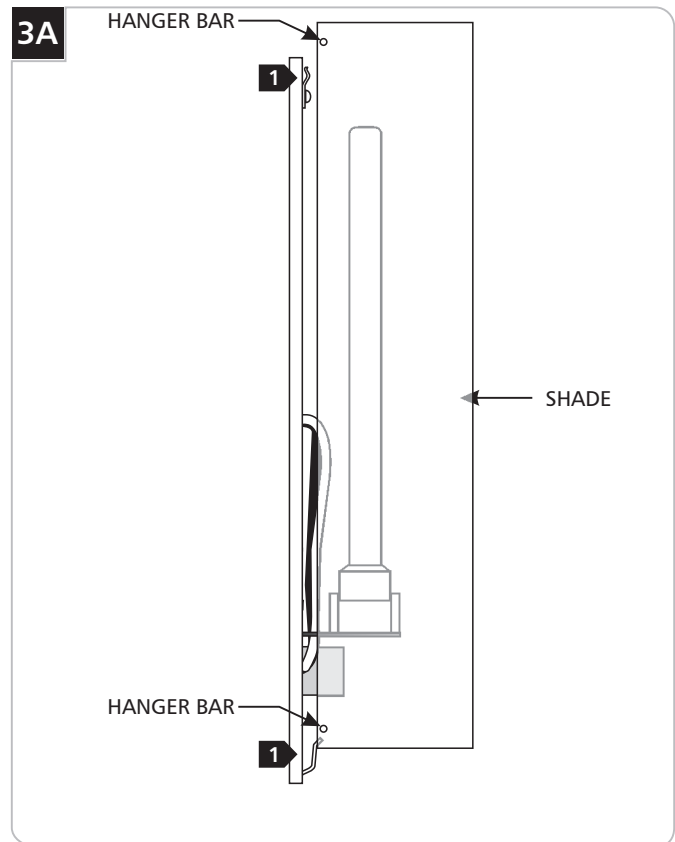
**CAUTION:** To reduce the risk of a burn or electric shock during relamping, disconnect the power to the fixture.

Use **MAX 18** Watt twin-tube, 2G11 base compact fluorescent lamp.



- 1 Push the lamp base completely into the socket.

## Install the Fabric Shade



- 1 Slide the shade hanger bars onto the clips on the mounting plate.

**SAVE THESE INSTRUCTIONS!**



**TECH LIGHTING®**

7400 Linder Ave, Skokie, IL 60077

847.410.4400

[www.techlighting.com](http://www.techlighting.com)

© 2008 Tech Lighting, L.L.C. All rights reserved. The "Tech Lighting" graphic is a registered trademark of Tech Lighting, L.L.C. Tech Lighting reserves the right to change specifications for product improvements without notification.

A Generation Brands Company