

Martini Glass Shield

700MRT_

1.6



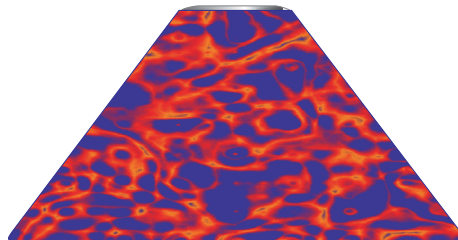
ACCESSORIES

GENERAL PRODUCT INFORMATION:

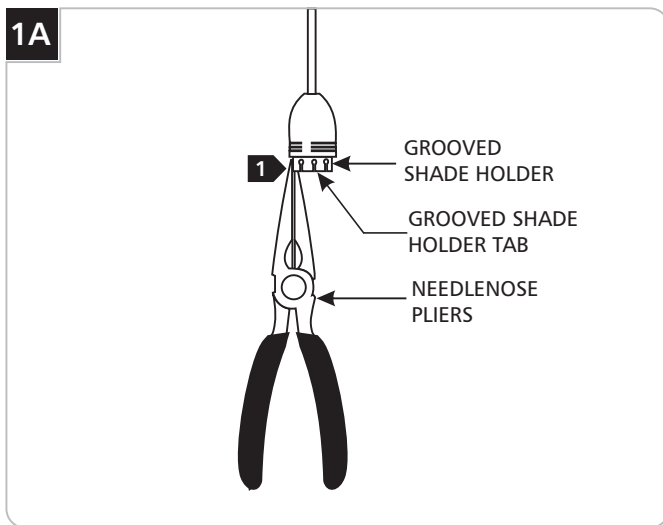


This product is suitable for indoor dry locations only.

This product must be used with Tech Lighting systems only.

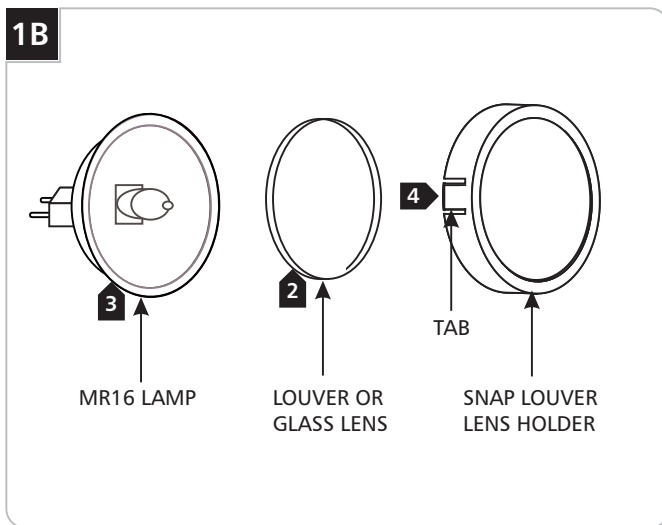


Installing the Martini Glass



- 1 If the Martini glass fits tight onto the fixture, then carefully bend the grooved shade holder tabs in slightly with the needle-nose pliers. If it fits loose, then carefully bend the grooved shade holder tabs out slightly with the needle-nose pliers.

NOTE: Steps 2 through 4 are optional.



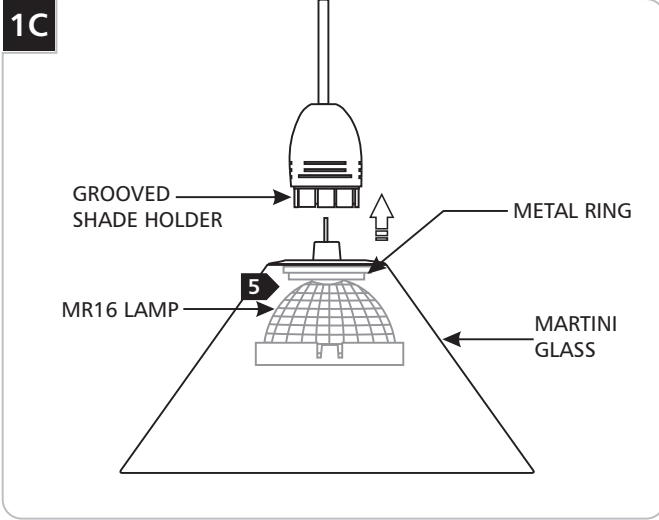
CAUTION: To reduce the risk of a burn or electric shock during relamping, disconnect the power to the fixture.

NOTE: Use only your fingers and a soft cloth to replace the lamp.

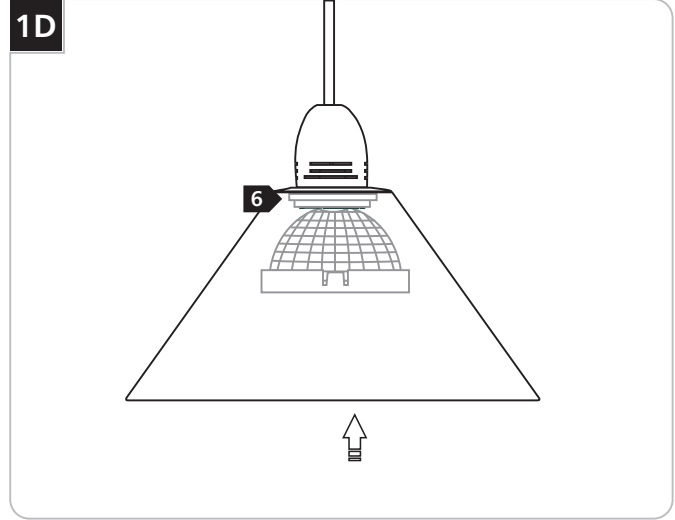
Use **MAX 50 Watt MR16 Front Cover Halogen Lamp.**



- 2 Place the louver or the glass lens (not included) into the Snap Louver Lens Holder.
- 3 Place the MR16 lamp into the Snap Louver Lens Holder.
- 4 Press the tabs on both sides of the Snap Louver Lens Holder against the MR16 lamp to keep it in the position.



5 Place the MR16 lamp into the Martini glass.



6 Hold the lamp against the glass with the thumb and push the lamp pins all the way into the socket holes; simultaneously push the Martini glass metal ring onto the grooved shade holder.

SAVE THESE INSTRUCTIONS!



TECH LIGHTING®

7400 Linder Ave, Skokie, IL 60077

847.410.4400

www.techlighting.com

© 2008 Tech Lighting, L.L.C. All rights reserved. The "Tech Lighting" graphic is a registered trademark of Tech Lighting, L.L.C. Tech Lighting reserves the right to change specifications for product improvements without notification.

A Generation Brands Company