

FEATURES & SPECIFICATIONS

INTENDED USE — Designed for use in open area applications and electronic offices where optical control, visual comfort and light cut-off are important.

Attributes: Design optimized for use with T8 lamps and low-profile electronic ballasts.

Aluminum louvers utilize the latest developments in louver finishing for minimized louver iridescence.

CONSTRUCTION — Black reveal provides floating louver appearance, conceals optional air-supply slots.

Square corner end plates improve strength and durability.

Integral T-bar safety clips hold fixture to T-bar securely; no fasteners required.

Heavy-gauge hinges die-formed for maximum strength; spring action latches concealed in black reveal.

Housing formed from cold-rolled steel. Louver formed from anodized aluminum. No asbestos used in this product.

Finish: Five-stage iron-phosphate pretreatment ensures superior paint adhesion. Painted parts finished with high-gloss, baked white enamel.

ELECTRICAL — Electronic ballasts are sound rated A. NEMA Premium®/CEE qualified ballast. Full light output, reduced energy. Less than 10% THD multi-volt operation (120-277).

Fixture conforms to UL1570 and is suitable for damp locations. AWM, TFN or THHN wire used throughout, rated for required temperatures.

MVOLT ballasts are NEMA Premium/CEE qualified ballasts. Full light output - reduced energy. Less than 10% THD. Multi-volt operation, 120-277V.

120V ballasts are ENERGY STAR® qualified FCC Class B for residential and commercial applications. Less than 10% THD. Quieter applications.

LISTINGS — UL Listed (Standard).

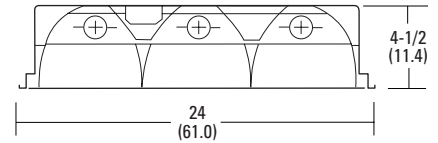
WARRANTY — Fixtures, including ballasts, are covered by Lithonia Lighting 24-month warranty against defects in manufacture.

Note: Specifications subject to change without notice.

Catalog Number
Notes
Type

Contractor Select

Parabolics



Specifications PT2U 2x2: 9-cell

Length: 24 (61.0)
 Width: 24 (61.0)
 Depth: 4-1/2 (11.4)
 Weight: 32 lbs (14.5 kg)

Specifications PT3 2x4: 18-cell

Length: 48 (122.0)
 Width: 24 (61.0)
 Depth: 4-1/2 (11.4)
 Weight: 32 lbs (14.5 kg)

All dimensions are inches (centimeters) unless otherwise indicated.

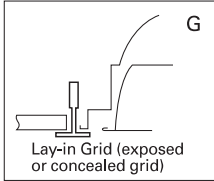
ORDERING INFORMATION

Catalog Number	UPC	Description	# of Lamps	# of Cells	Wattage	Voltage	Ballast type	# of Ballasts	Lamp type	Pre-wired	Lamp included	Pallet qty.
PT3 MV	745975079155	2x4 recessed, static	3	18	32	120-277	NEMA Premium, instant start	1	N/A	N	N	20
PT3L MV	745975079421	2x4 recessed, static	3	18	32	120-277	NEMA Premium, instant start	1	700 series, 3500K	N	Y	20
PT3LW MV	745975079360	2x4 recessed, static	3	18	32	120-277	NEMA Premium, instant start	1	700 series, 3500K	Y	Y	20
PT3 2MV	745975118373	2x4 recessed, static	3	18	32	120-277	NEMA Premium, instant start	2	N/A	N	N	20
PT3A MV	745975079513	2x4 recessed, air	3	18	32	120-277	NEMA Premium, instant start	1	N/A	N	N	20
PT2U MV	745975079247	2x2 recessed, static	2	9	32-U lamp	120-277	NEMA Premium, instant start	1	N/A	N	N	40
PT2UA MV	745975490417	2x2 recessed, air	2	9	32-U lamp	120-277	NEMA Premium, instant start	1	N/A	N	N	40

Parabolics 2'x4' and 2'x2'

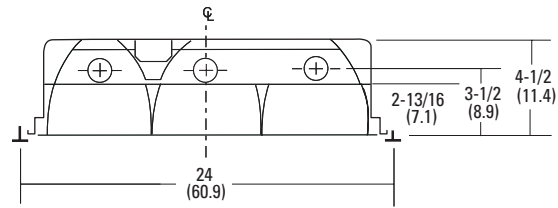
MOUNTING DATA

Ceiling Type	Appropriate Trim Type
Exposed grid tee	G
Concealed grid tee	G, ST



DIMENSIONS

All dimensions are inches (centimeters) unless otherwise indicated.



PHOTOMETRICS

Calculated using the zonal cavity method in accordance with IESNA LM41 procedures. Floor reflectances are 20%. Lamp configurations shown are typical. Full photometric data on these and other configurations available upon request.

TEST NO: LTL14671 CS

PT3 MV

LUMENS PER LAMP: 2850 LUM. EFF. - 75.1%

LAMPS PER LUMINAIRE: 3

RCR	Coefficients of Utilization									
	pf	80%			70%			50%		
		pc	pw		50%	30%	10%	50%	30%	10%
0	89	89	89	87	87	87	83	83	83	
1	80	78	75	79	76	74	76	74	72	
2	71	67	63	70	66	63	67	64	61	
3	64	58	54	62	57	53	60	56	53	
4	57	51	46	56	50	46	54	49	45	
5	51	45	40	50	44	40	49	44	40	
6	46	40	35	45	39	35	44	39	35	
7	42	36	31	41	35	31	40	35	31	
8	38	32	28	38	32	28	37	31	28	
9	35	29	25	34	29	25	34	28	25	
10	32	26	23	32	26	23	31	26	22	

Zonal Lumen Summary		
Zone	Lumens	% Lamp % Fixture
0° - 30°	1982.1	23.2 30.9
0° - 40°	3413.2	39.9 53.1
0° - 60°	5866.8	68.6 91.4
0° - 90°	6422.1	75.1 100.0
90° - 180°	0.0	0.0 0.0
0° - 180°	6422.1	75.1 100.0