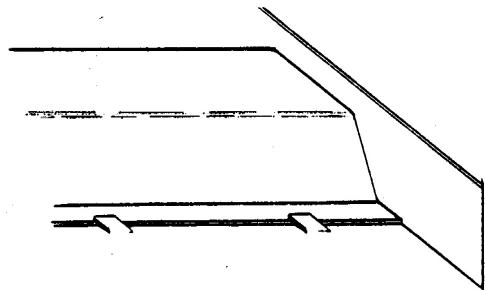
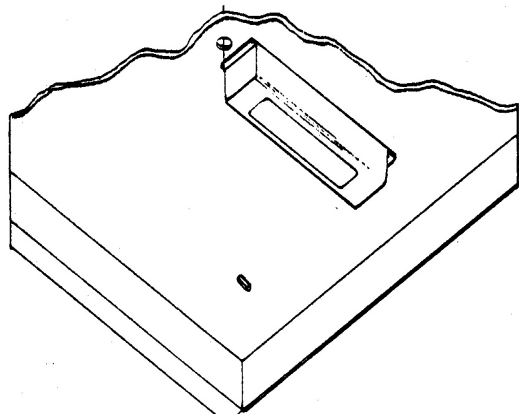


This unit is equipped with a thermally protected class "P" ballast.

- 1) Turn off power supply at fuse box before installing fixture
- 2) Remove ballast cover.



Squeeze to release from beneath metal clip.

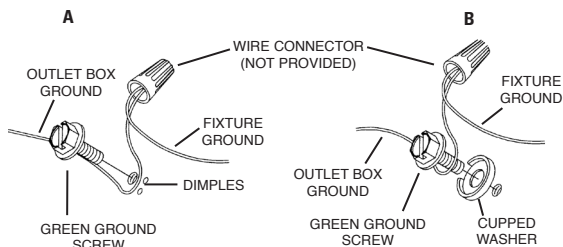


- 3) Remove 7/8" diameter wireway knockout at center of fixture.
- 4) Position housing on ceiling and mark ceiling at mounting holes.
- 5) Be certain there are no obstructions above ceiling at mounting hole location.
- 6) Drill holes at locations marked for desired mounting hardware.

2x2 HOUSING ONLY:

- 7) Pass wires from outlet box through bushed center hole in housing.
- 8) Attach housing to ceiling using screws provided or other mounting hardware.
- 9) Grounding instructions: (See Illus. A or B).
 - A) On fixtures where mounting strap is provided with a hole and two raised dimples. Wrap ground wire from outlet box around green ground screw, and thread into hole.
 - B) On fixtures where a cupped washer is provided. Attach ground wire from outlet box under cupped washer and green ground screw, and thread into mounting strap.

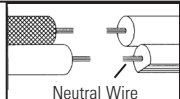
If fixture is provided with ground wire. Connect fixture ground wire to outlet box ground wire with wire connector (not provided.) After following the above steps. Never connect ground wire to black or white power supply wires.



- 10) Make wire connections (connectors not provided). Reference chart below for correct connections and wire accordingly.

Connect Black or Red Supply Wire to:	Connect White Supply Wire to:
Black	White
*Parallel cord (round & smooth)	*Parallel cord (square & ridged)
Clear, Brown, Gold or Black without tracer	Clear, Brown, Gold or Black with tracer
Insulated wire (other than green) with copper conductor	Insulated wire (other than green) with silver conductor

*Note: When parallel wires (SPT I & SPT II) are used. The neutral wire is square shaped or ridged and the other wire will be round in shape or smooth (see illus.)



- 11) Re-attach ballast cover.

DECORATIVE FRAME INSTALLATION:

After the fixture housing has been installed to your ceiling, attach the decorative frame as follows:

- 1) Hook one side of decorative frame onto housing edge.
- 2) Push opposite side of decorative frame upward past housing edge.
- 3) Shift decorative frame in direction of hooked side.
- 4) Drop decorative frame into place.

