

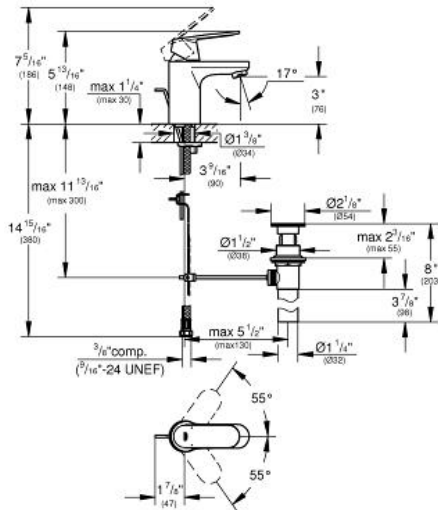
EUROSMART COSMOPOLITAN Lavatory Centerset S-Size

MODEL # 32875

Pure Freude an Wasser



GROHE America, Inc | 200 North Gary Avenue, Suite G, Roselle, IL 60172
Phone: +1 (800) 444-7643 | Fax: +1 (800) 225-2778 | us-customerservice@grohe.com



Product Description: Lavatory Centerset S-Size

Standard Specification:

- Single hole installation
- Metal lever
- **GROHE SilkMove®** ceramic cartridge
- **GROHE StarLight®** finish
- Adjustable flow rate limiter
- Adjustable minimum flow rate approx. 1.0 gpm
- Flow control
- 1 1/4" pop-up waste set
- Stainless Steel Braided Flexible Supplies
- **GROHE QuickFix™** installation system with centering support
- Optional temperature limiter ref. no. 46 375
- Noise classification 1 in accordance with DIN4109 incl. certificate
- Max Flow Rate 1.5 gpm (5.7 L/min)

Color:

- 32875 000 chrome