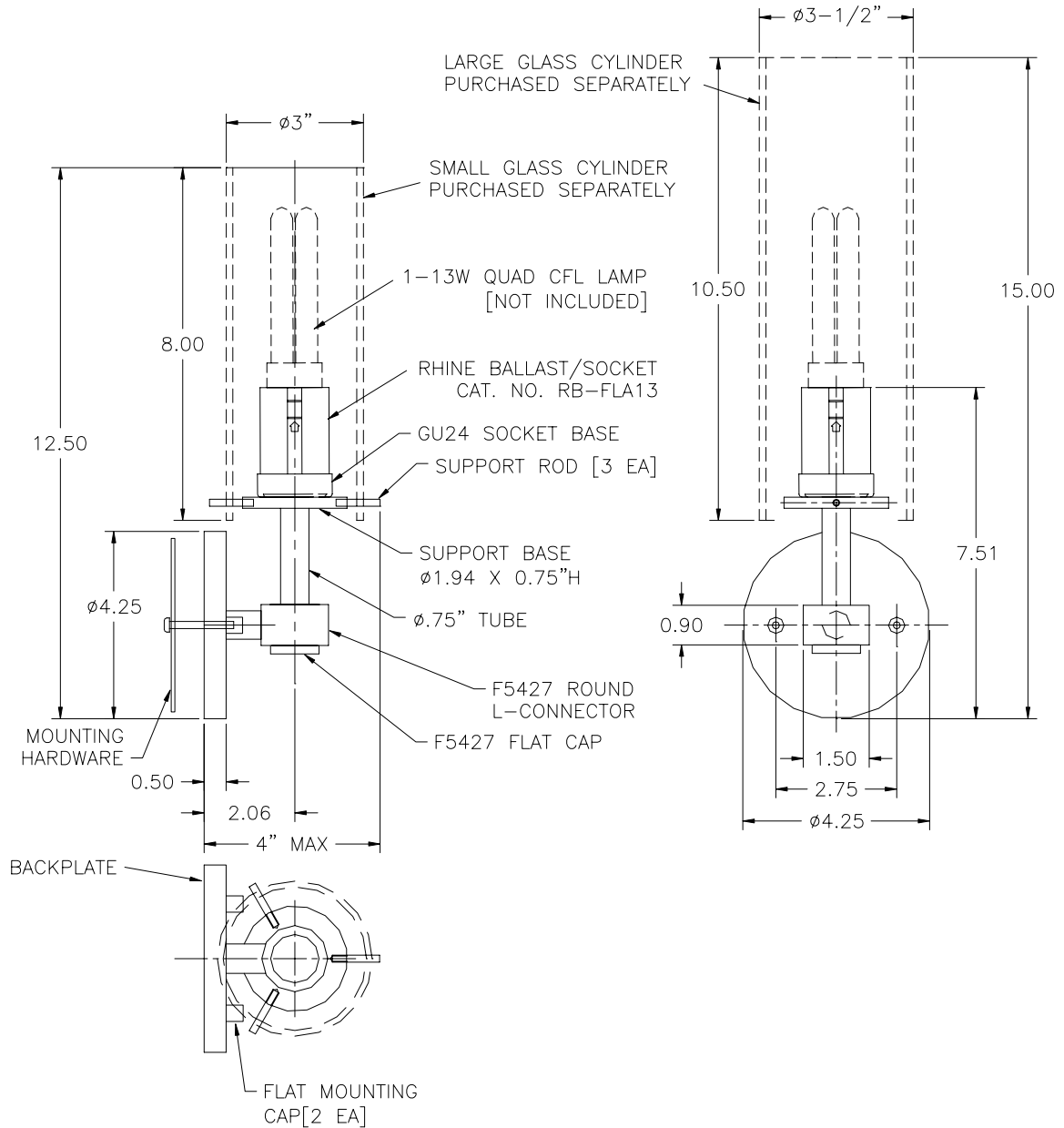


## Specification Sheet

ADA Wall Holder

**Model: F5465-35E113 Chrome**  
**F5465-36E113 Satin Nickel**  
**F5465-68E113 Deep Bronze**



Glass: PURCHASED SEPARATELY

Height: 7-1/2" Width: 4-1/4" Extension: 4"

Lamps: One 13 Watt Quad Tube Compact Fluorescent, 4-pin G24q-1 Base (Not Included)

Ballast: Electronic 120V, 60Hz

Labels: cULus Listed. Suitable for Damp Locations.