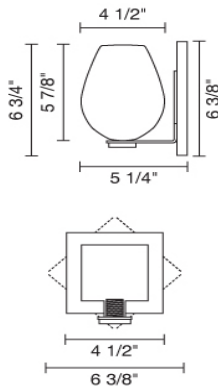
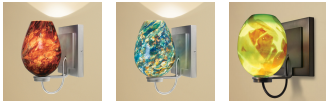


BOLERO DIAMOND SCONCE



Description:

Bolero glass is a free-blown glass that receives its shape directly out of the furnace. This Artisan process, executed by only Master Glass Blowers, guarantees each piece is one of a kind. The Bolero wall sconce may be mounted as an up-light or a down-light. The wall sconce may be mounted as a square or at an 45 degree angle to create a diamond shape. The metal canopy and stem is available in bronze. A 75W dimmable electronic transformer is included on the mounting plate.

Part Numbers:

101336bz	bronze, amber glass
101336ch	chrome, amber glass
101336mc	matte chrome, amber glass
101337bz	bronze, autumn leaf glass
101337ch	chrome, autumn leaf glass
101337mc	matte chrome, autumn leaf glass
101338bz	bronze, seafoam green glass
101338ch	chrome, seafoam green glass
101338mc	matte chrome, seafoam green glass
101339bz	bronze, typhoon glass
101339ch	chrome, typhoon glass
101339mc	matte chrome, typhoon glass

Technical Specs:

120V AC, 50/60Hz input
11.7V AC output
50VA, 49W for 1(maximum 50 Watt lamp)
GY6.35 socket
Suitable for dry locations only
Mount to 3 1/2" - 4" round J-box
Short circuit protection
Overload protection
Thermal protection
Dimmable