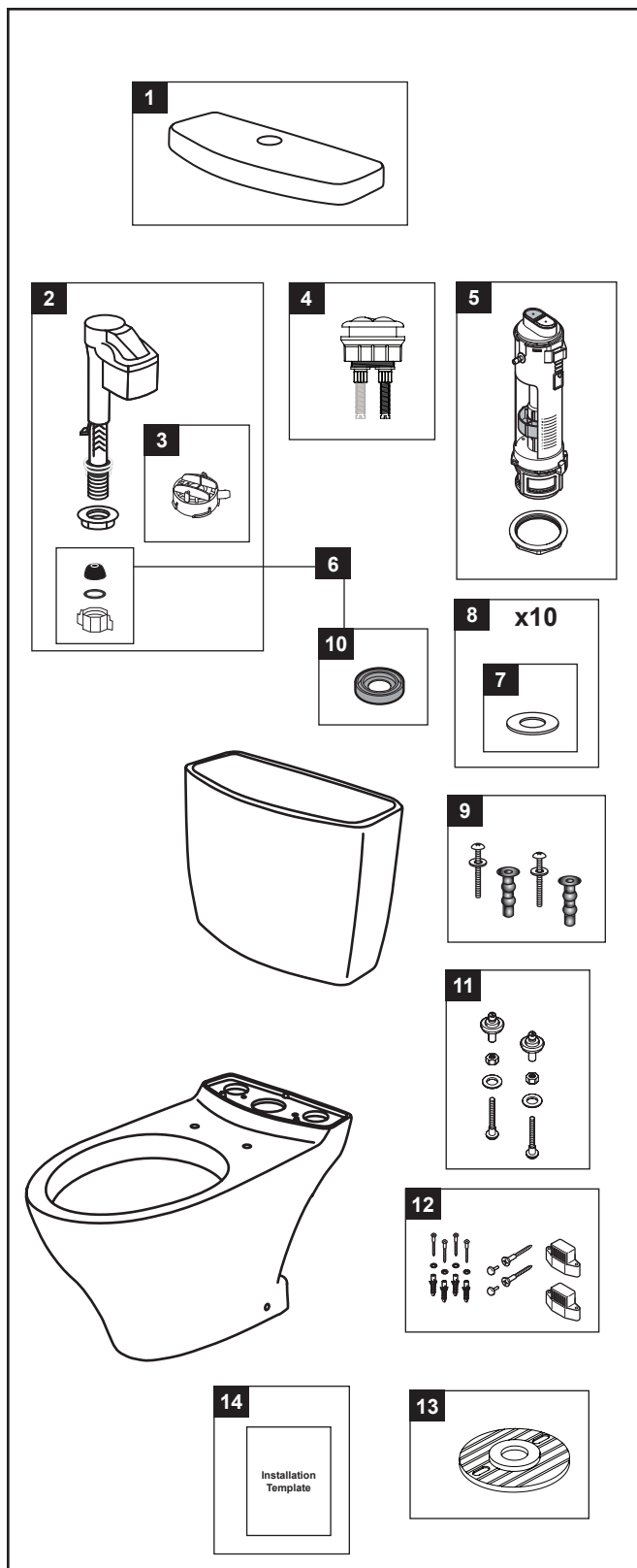


Aquia® II
1.6 & 0.9 Gpf Toilet, Elongated,
Dual Max®, 12" Rough In



Item	Part	Description
1	TCU416CR#01	Tank Lid w/ Velcro Tape - Cotton White
	TCU416CR#03	Tank Lid w/ Velcro Tape - Bone
	TCU416CR#04	Tank Lid w/ Velcro Tape - Grey
	TCU416CR#11	Tank Lid w/ Velcro Tape - Colonial White
	TCU416CR#12	Tank Lid w/ Velcro Tape - Sedona Beige
	TCU416CR#51	Tank Lid w/ Velcro Tape - Ebony
2	TSU09A.8R	Fill Valve - Dual Max®
3	THU302	Diaphragm Cap - Lavelle
4	THU314#CP	Push Button Assembly - Chrome Plated
5	THU224	Flush Valve
6	THU238	Parts Bag Assembly
7	9BU064E	Flush Valve Gasket (1pc)
8	THU227	Flush Valve Gasket (10pcs)
9	THU651N	Top Mounting Seat Hardware
10	9BU062E	Tank to Bowl Gasket
11	TS810DV2	Tank Top Mounting Kit
12	THU223#CP	Toilet Mounting Hardware - Chrome Plated
13	THU291	Socket Roughin
14	0GU147-1	Installation Template

Product Number Explanation

<u>Two-Piece Toilet</u>	<u>Tank</u>	<u>Bowl</u>
(CST) Gravity Type Toilet	(ST) Tank	(CT) Bowl
(416) Model	(416) Model	(416) Model
(M) Dual Max®	(M) Dual Max®	

Actual product may differ slightly from illustration