



Model 120173

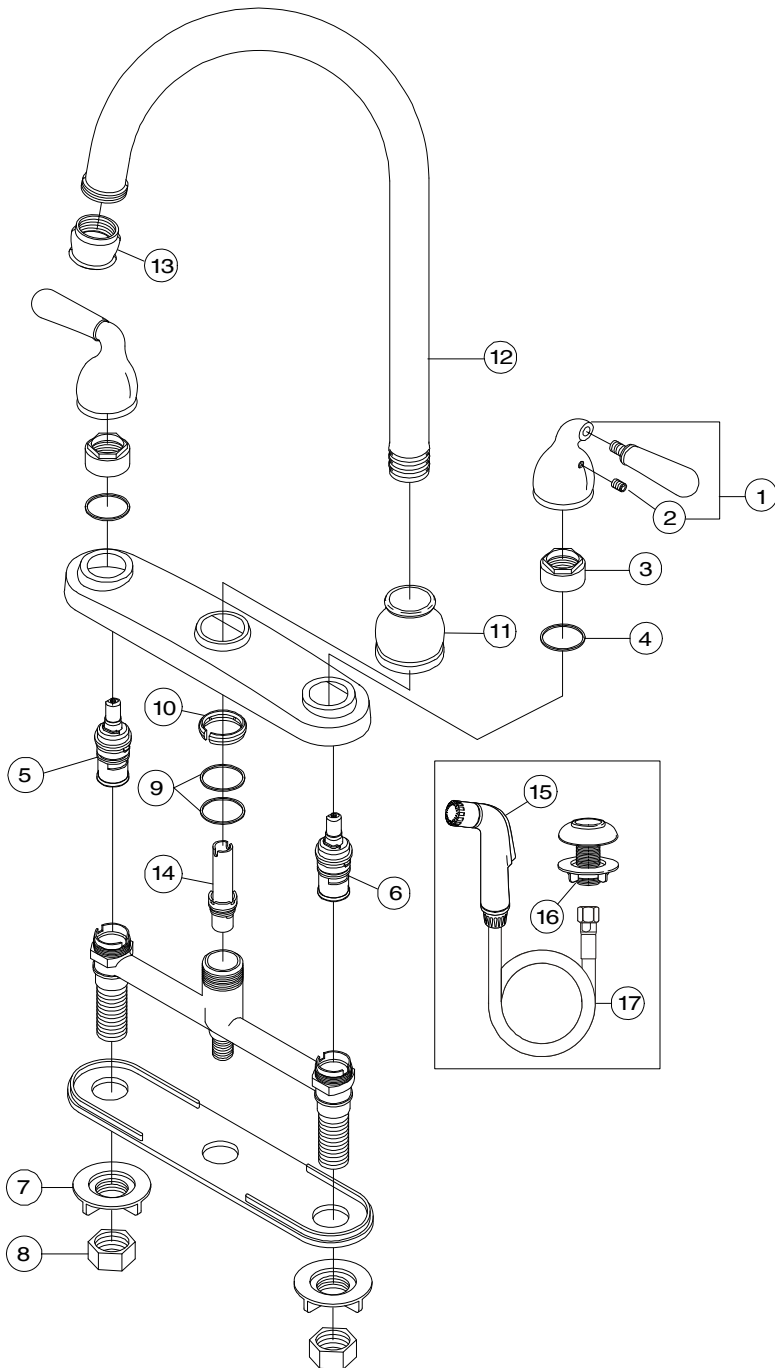
Twin Lever Handle Gooseneck Spout Kitchen Faucet
Chrome Plated Finish
With Spray
1/2" IPS Connection

Sanibel™



Model 120173

Refer to Premier Faucet Parts List Sheet for part numbers and ordering information.



For additional information contact Premier Faucet at 866-745-4010 or visit our website at www.premierfaucet.com



Model 120173

Twin Lever Handle Gooseneck Spout Kitchen Faucet
Chrome Plated Finish
With Spray
1/2" IPS Connection

Sanibel™



Model 120173

Refer to Premier Faucet Parts Schematic Sheet for parts diagram.

INDEX	DESCRIPTION	MATERIAL	QTY	PART NO
1	HANDLE ASSEMBLY	CP ZINC	1	994173
2	HANDLE SCREW	STAINLESS STEEL	2	994197
3	BONNET NUT	CP ZINC	2	994316
4	CAP GASKET	POLYETHYLENE	2	994515
5	CARTRIDGE - HOT	CERAMIC	1	133508
6	CARTRIDGE - COLD	CERAMIC	1	133509
7	LOCK NUT	ABS	2	133836
8	COUPLING NUT	BRASS	2	133838
9	SPOUT O-RING	BUNA-N	2	994532
10	SPLIT RING	POM	1	994547
11	SPOUT BASE COLLAR	BRASS	1	994496
12	SPOUT	BRASS	1	994465
13	AERATOR	BRASS	1	144205
14	SPRAY DIVERter	POLYETHYLENE	1	994114
15	SPRAYER	PLASTIC	1	994304
16	SPRAY CRADLE	PLASTIC	1	994292
17	SPRAY HOSE	PVC	1	153185