

THIS SPACE FOR DESIGNER/ ENGINEER APPROVAL

Job/Customer _____ Date _____ Contractor _____

Model Specified _____ Qty _____ Approved By _____

Designer/Engineer _____ Date _____ Contractor's PO# _____

Submitted by _____ Date _____ Other _____

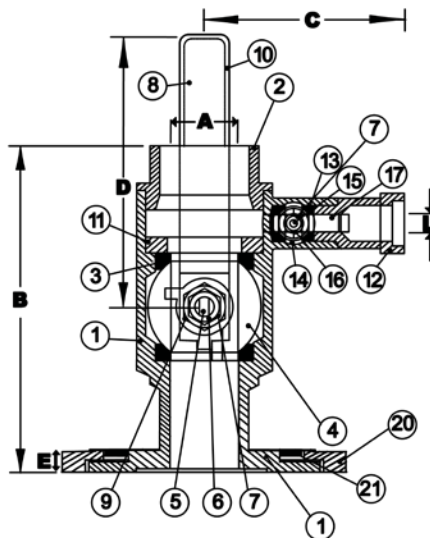
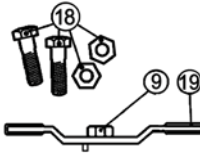
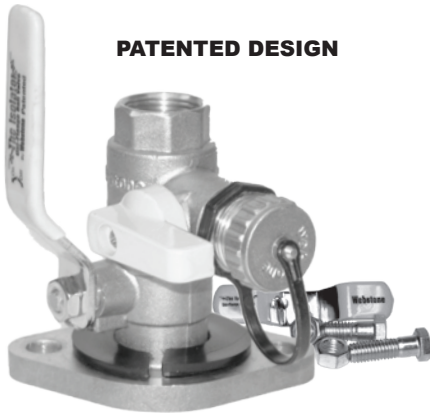
4141 Series & 4141HV

**FULL PORT FORGED BRASS
UNI-FLANGE BALL VALVES
W/ DETACHABLE ROTATING FLANGE
& HI-FLOW HOSE DRAIN, BONUS WING
STYLE "T" HANDLE, NUTS & BOLTS
IPS X ROTATING FLANGE
600 WOG - ISO 9001:2000**

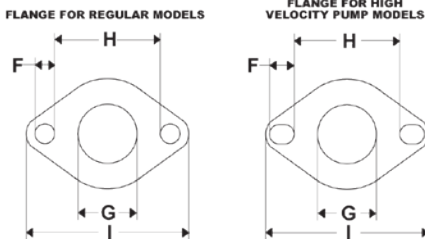


**The Only Way To
Isolate Circulator Pumps**

| ITEM # | SIZE | P/CARTON | P/CASE | A | B | C | D | E | F | G | H | I | L |
|---------|--------|----------|--------|-------|---------|--------|-------|-----|-----|---------|---------|--------|-----|
| 41413 | 3/4" | 2 | 20 | 3/4 | 3 13/16 | 2 3/8 | 4 | 3/8 | 1/2 | 1 | 2 11/16 | 4 3/16 | 1/2 |
| 41414 | 1" | 2 | 20 | 1 | 4 1/4 | 2 5/8 | 4 5/8 | 3/8 | 1/2 | 1 1/4 | 2 11/16 | 4 3/16 | 1/2 |
| 41415 | 1 1/4" | 2 | 20 | 1 1/4 | 5 5/16 | 3 1/16 | 4 5/8 | 3/8 | 1/2 | 1 9/16 | 2 11/16 | 4 3/16 | 3/4 |
| 41416 | 1 1/2" | 2 | 10 | 1 1/4 | 5 5/16 | 3 3/8 | 5 1/2 | 3/8 | 1/2 | 1 15/16 | 2 11/16 | 4 3/16 | 3/4 |
| 41413HV | 3/4" | 2 | 20 | 3/4 | 3 13/16 | 2 3/8 | 4 | 3/8 | 5/8 | 1 | 2 11/16 | 4 3/16 | 1/2 |
| 41414HV | 1" | 2 | 20 | 1 | 4 1/4 | 2 5/8 | 4 5/8 | 3/8 | 5/8 | 1 1/4 | 2 11/16 | 4 3/16 | 1/2 |
| 41415HV | 1 1/4" | 2 | 20 | 1 1/4 | 5 5/16 | 3 1/16 | 4 5/8 | 3/8 | 5/8 | 1 9/16 | 2 11/16 | 4 3/16 | 3/4 |
| 41416HV | 1 1/2" | 2 | 10 | 1 1/4 | 5 5/16 | 3 3/8 | 5 1/2 | 3/8 | 5/8 | 1 15/16 | 2 11/16 | 4 3/16 | 3/4 |



| NO. | DESCRIPTION | MATERIAL |
|-----|-----------------------|-------------------------|
| 1 | FLANGED BODY | BRASS |
| 2 | END CAP | BRASS |
| 3 | SEATS | PTFE |
| 4 | BALL | BRASS HCP |
| 5 | STEM | BRASS |
| 6 | STEM SEAL | PTFE |
| 7 | PACKING GLAND | BRASS |
| 8 | LEVER HANDLE | CP STEEL |
| 9 | HANDLE NUT | BRASS |
| 10 | HANDLE JACKET | VINYL |
| 11 | SEAT RETAINER | BRASS |
| 12 | DRAIN VALVE | BRASS |
| 13 | DRAIN VALVE SEATS | PTFE |
| 14 | DRAIN VALVE BALL | BRASS HCP |
| 15 | DRAIN VALVE STEM | BRASS |
| 16 | DRAIN VALVE STEM SEAL | PTFE |
| 17 | DRAIN VALVE HANDLE | ENAMEL COATED ALUMINUM |
| 18 | FLANGE BOLTS & NUTS | STEEL |
| 19 | WING STYLE "T" HANDLE | CP STEEL W/ VINYL GRIPS |
| 20 | ROTATING FLANGE | BRASS |
| 21 | FLANGE RING | ABS |



| TEMP °F | WOG |
|---------|-----|
| 100 | 600 |
| 150 | 490 |
| 200 | 470 |
| 250 | 439 |
| 300 | 411 |
| 350 | 294 |
| 366 | N/A |

Specifications: Designed for residential, commercial or industrial use with water, oil or gas. This approved Webstone Valve is actuated by a blowout proof stem and features an adjustable packing nut. Threaded ends comply with ANSI B1.20.1

Webstone Company, Inc.
www.webstonevalves.com

Quality and Commitment Since 1954

Tel: (800) 225-9529 • Fax (800) 336-5133

Webstone product specifications in U.S. customary units are approximate and are provided for reference only. Webstone reserves the right to change or modify product design, construction, specifications or materials without prior notice and without incurring any obligation to make such changes and modifications on Webstone products previously or subsequently sold.