



# T&S BRASS AND BRONZE WORKS, INC.

2 Saddleback Cove / P.O. Box 1088  
Travelers Rest, SC 29690



REG. #A2601  
ISO #9001

Model No.

**B-0205**

Item No.

Travelers Rest, SC: 800-476-4103 Simi Valley, CA: 800-423-0150 Fax: 864-834-3518 www.tsbrass.com

This Space for Architect/Engineer Approval

Job Name \_\_\_\_\_ Date \_\_\_\_\_

Model Specified \_\_\_\_\_ Quantity \_\_\_\_\_

Customer/Wholesaler \_\_\_\_\_

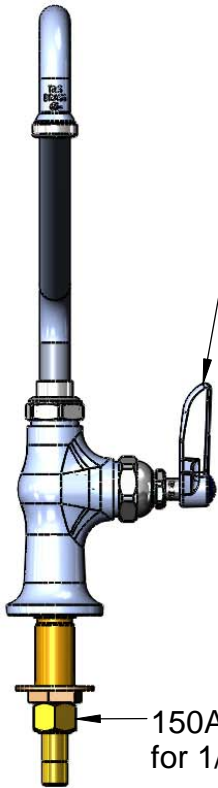
Contractor \_\_\_\_\_

Architect/Engineer \_\_\_\_\_

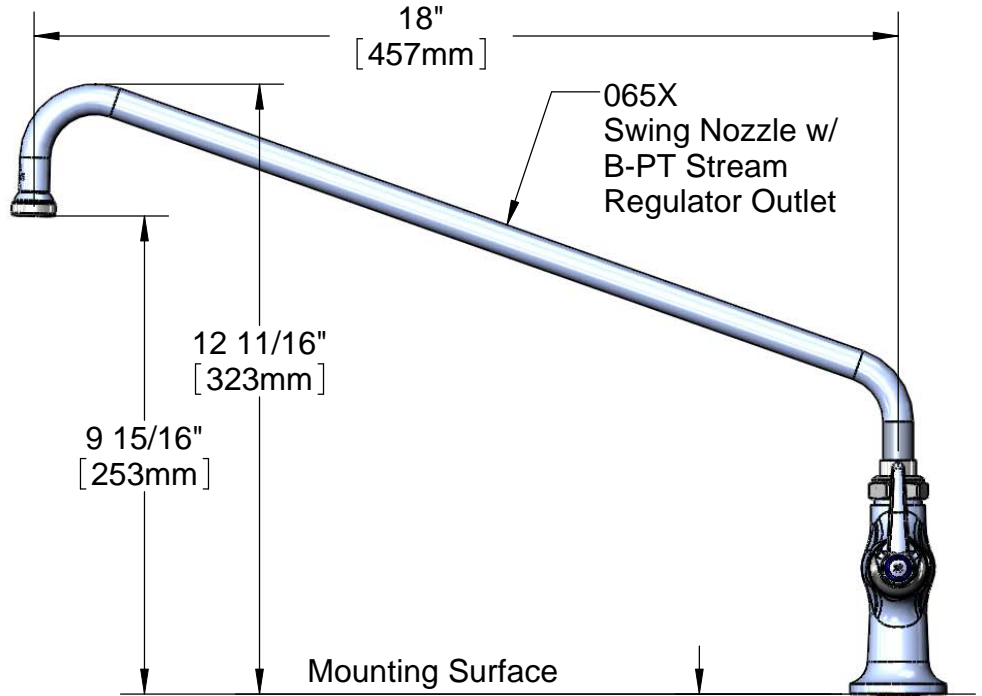


**ADA Compliant**

Eterna Cartridge & Lever Handle w/ Color Coded (CW) Index



150A Tailpiece and Nut for 1/4" NPT Connection



Fits Decks 1 1/8" [29mm] Thick or 1 1/4" [32mm] Maximum by Removing Washer

Ø 2" [51mm] Base w/ 1/2" NPSM Male Inlet

**Note: Rough-In Requirement**

Ø 1 1/2" [Ø 38mm] Hole  
(Ø 1 1/4" [Ø 32mm] Minimum)

Product Specifications:

Single Pantry Faucet w/ Eterna Cartridge, 18" Swing Nozzle w/ B-PT Stream Regulator Outlet, Lever Handle & Tailpiece

Drawn <b>DHL</b>	Checked <b>JRM</b>	Approved <b>JHB</b>
Scale: <b>1:4</b>		Date: <b>02/17/11</b>



**T&S BRASS AND BRONZE WORKS, INC.**

2 Saddleback Cove / P.O. Box 1088  
Travelers Rest, SC 29690



REG. #A2601  
ISO #9001

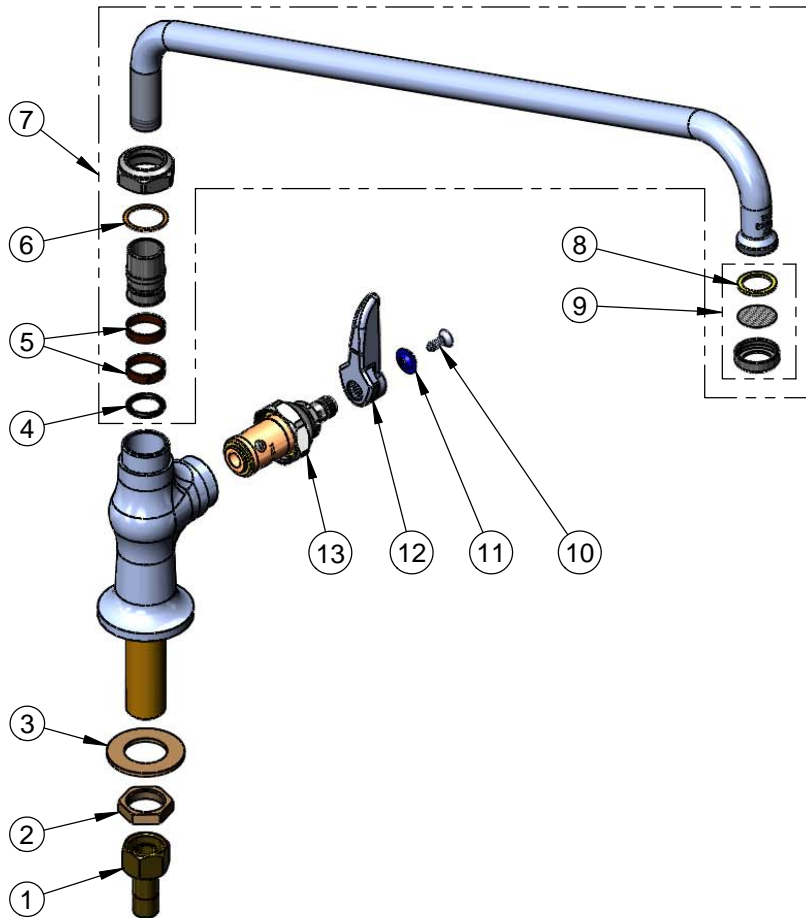
Model No.

**B-0205**

Item No.

Travelers Rest, SC: 800-476-4103 Simi Valley, CA: 800-423-0150 Fax: 864-834-3518 www.tsbrass.com

ITEM NO.	SALES NO.	DESCRIPTION
1	150A	Bag of (1) Nut & (1) Tailpiece
2	002954-45	Shank Lock Nut
3	000999-45	Brass Lock Washer
4	001074-45	O-Ring
5	011429-45	Swivel Sleeves (2)
6	009538-45	Swivel Washer
7	065X	18" Swing Nozzle Assembly
8	001048-45	Nozzle Tip Washer
9	B-PT	Stream Regulator Assembly
10	000922-45	Lever Handle Screw
11	001660-45	Blue Index-CW
12	001638-45	Lever Handle
13	005960-40	Spindle Asm, Eterna "Hot"



Product Specifications:

Single Pantry Faucet w/ Eterna Cartridge, 18" Swing Nozzle w/ B-PT Stream Regulator Outlet, Lever Handle & Tailpiece

Drawn <b>DHL</b>	Checked <b>JRM</b>	Approved <b>JHB</b>
Scale: <b>NTS</b>		Date: <b>02/17/11</b>