

Royal® Prison Model Flushometer

613
613-1
613-0.5



Description

Concealed Urinal Flushometer, for stainless steel 3/4" back inlet urinals.

Flush Cycle

- Model 613 Water Saver (1.5 gpf/5.7 Lpf)
- Model 613-1 Low Consumption (1.0 gpf/3.8 Lpf)
- Model 613-0.5 (0.5 gpf/1.9 Lpf)

Specifications

Quiet, Concealed, Diaphragm Type, Rough Brass Urinal Flushometer for either left or right hand supply with the following features:

- Dual Filtered By-Pass
- Diaphragm, Handle Packing, Stop Seat and Vacuum Breaker to be molded from PERMEX™ rubber compound for Chloramine resistance
- Metal Non-Hold-Open Push Button with a Triple Seal Handle Packing
- 3/4" I.P.S. Wheel Handle Bak-Chek™ Angle Stop
- Adjustable Tailpiece
- High Back Pressure Vacuum Breaker
- Elbow Flush Connection
- Coupling for 3/4" NPT Back Inlet Urinals (for connection in the pipe chase - flush connection through the wall not provided by Sloan)
- Sweat Solder Adapter

• Exposed parts Chrome Plated
Valve Body, Cover, Tailpiece and Control Stop shall be in conformance with ASTM Alloy Classification for Semi-Red Brass. Valve shall be in compliance to the applicable sections of ASSE 1037, ANSI/ASME 112.19.6, and Military Specification V-29193.

L Dimension

Specify the "L" Dimension for the proper length of the Push Button Assembly. The "L" Dimension is equal to the Wall Thickness (to the nearest whole inch) plus 2 3/4".

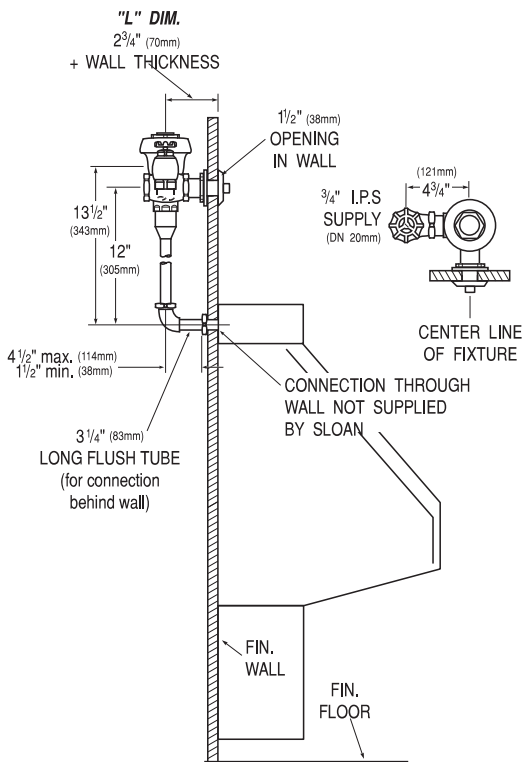
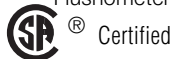
Variations

- ES** Solenoid Operated (specify 24 VAC or 120 VAC)
- ESM** Solenoid Operated with Modular Plug for use with Sloan PWT Systems (24 VAC only)
- WB** For installation with Sloan Easy Access® Wall Box

▶ For Hydraulic operation use Flushometer Model 9613.

▶ Prison Flushometers can also be provided in Regal® and/or Naval® Models. All rough-in dimensions remain the same.

See Accessories Section of the Sloan catalog for details on these and other Flushometer variations.



This space for Architect/Engineer approval

The information contained in this document is subject to change without notice.

Made in the U.S.A.



SLOAN VALVE COMPANY • 10500 SEYMOUR AVE. • FRANKLIN PARK, IL 60131
PHONE: 1-800 982-5839 • FAX: 1-800 447-8329 • <http://www.sloanvalve.com>