



# Model 118030

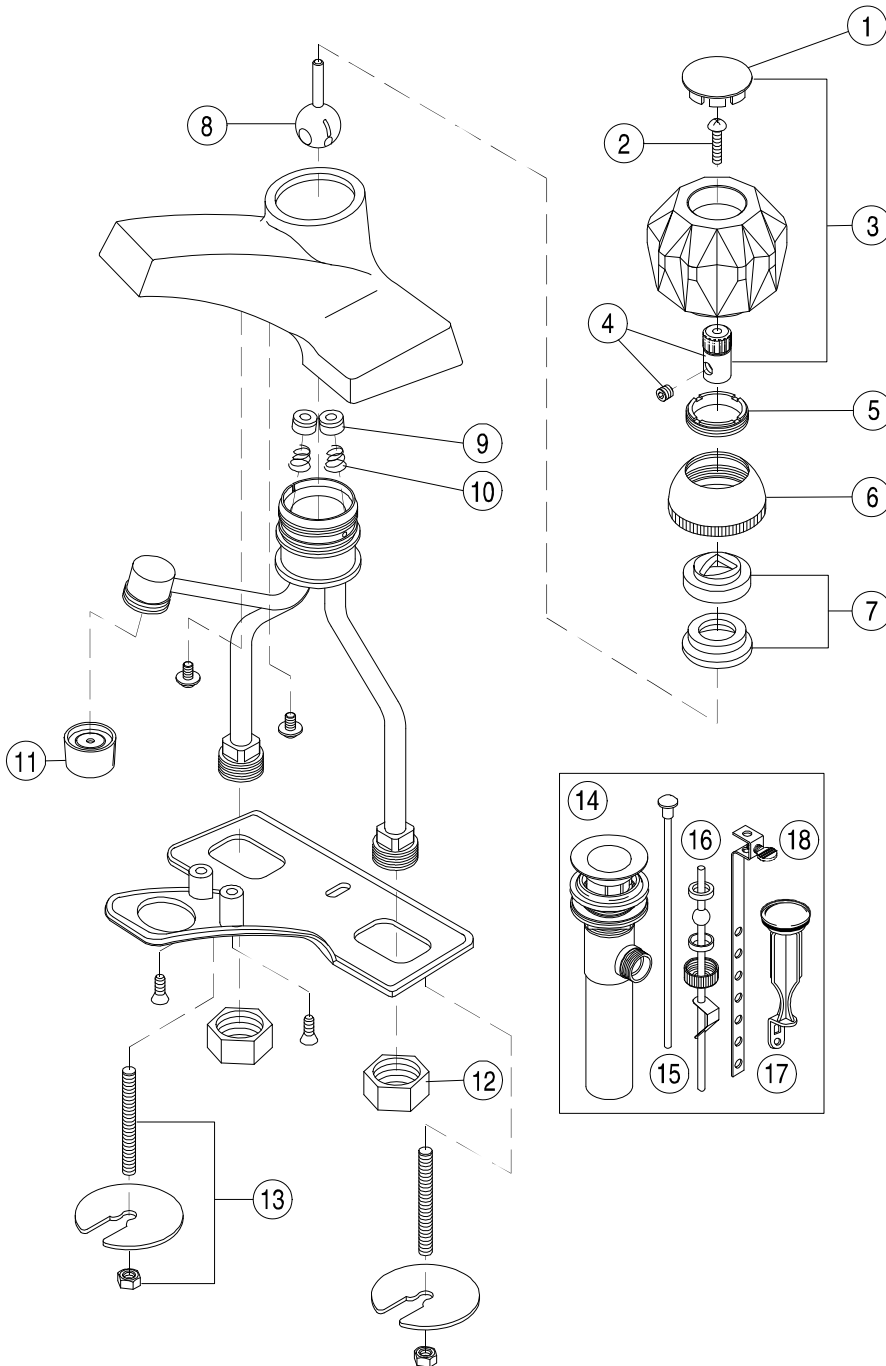
Single Acrylic Handle Lavatory Faucet  
Chrome Plated Finish  
With Brass Pop-Up  
1/2" IPS Connection

# CONCORD™



Model 118030

*Refer to Premier Faucet Parts List Sheet for part numbers and ordering information.*



For additional information contact Premier Faucet at 866-745-4010 or visit our website at [www.premierfaucet.com](http://www.premierfaucet.com)

**Model 118030**

Single Acrylic Handle Lavatory Faucet  
 Chrome Plated Finish  
 With Brass Pop-Up  
 1/2" IPS Connection

**CONCORD™**

Model 118030

*Refer to Premier Faucet Parts Schematic Sheet for parts diagram.*

| INDEX | DESCRIPTION      | MATERIAL        | QTY | PART NO |
|-------|------------------|-----------------|-----|---------|
| 1     | INDEX BUTTON     | ACRYLIC         | 1   | 114091  |
| 2     | HANDLE SCREW     | BRASS           | 1   | 994187  |
| 3     | HANDLE ASSEMBLY  | ACRYLIC         | 1   | 012042  |
| 4     | HANDLE ADAPTER   | BRASS           | 1   | 994116  |
| 5     | TENSION RING     | BRASS           | 1   | 133593  |
| 6     | CAP              | ZINC            | 1   | 133625  |
| 7     | CAM & PACKING    | POM/RUBBER      | 1   | 133577  |
| 8     | BALL             | STAINLESS STEEL | 1   | 133437  |
| 9     | SEAT WASHER      | RUBBER          | 2   | 133398  |
| 10    | SPRING           | STAINLESS STEEL | 2   | 133400  |
| 11    | AERATOR          | BRASS           | 1   | 144211  |
| 12    | COUPLING NUT     | BRASS           | 2   | 133838  |
| 13    | INSTALLATION KIT | STEEL           | 1   | 994258  |
| 14    | POP-UP ASSEMBLY  | BRASS           | 1   | 124100  |
| 15    | LIFT ROD         | METAL           | 1   | 994599  |
| 16    | BALL ROD ASSY    | METAL/PLASTIC   | 1   | 133833  |
| 17    | STOPPER          | PLASTIC         | 1   | 015084  |
| 18    | LIFT STRAP       | METAL           | 1   | 133833  |