

Highlights

- Pforever Warranty®
- Solid Brass Construction
- Lever Handle

Code Compliance

Price Pfister products are designed and manufactured in compliance with the following standards and codes:

- IAPMO certified • ASME A112.18.1
- CSA B125 certified • ASSE 1016
- ANSI A117.1 (Lever handles only)

R89 Series

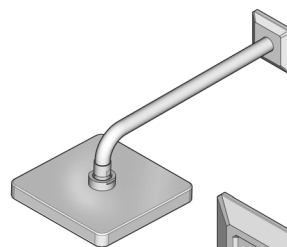
Park Avenue™

Shower Trim

- Lever Handle
- Shower Only
- Valve Not Included

Finishes	R89-7FEC	R89-7FED	R89-7FEK	R89-7FEY	R89-8FEC	R89-8FED	R89-8FEK	R89-8FEY
Tuscan Bronze				X				X
Polished Chrome	X				X			
Brushed Nickel			X				X	
Polished Nickel		X				X		

Features	R89-7FEC	R89-7FED	R89-7FEK	R89-7FEY	R89-8FEC	R89-8FED	R89-8FEK	R89-8FEY
Solid Brass Construction	X	X	X	X	X	X	X	X
Lever Handle	X	X	X	X	X	X	X	X
Fits 0X8 and 0X9 Valve Bodies	X	X	X	X	X	X	X	X
2.5gpm Shower Head	X	X	X	X	X	X	X	X
ADA Compliant	X	X	X	X	X	X	X	X
Tub & Shower					X	X	X	X
Shower Only	X	X	X	X				
Trim Only	X	X	X	X	X	X	X	X
Metal Shower Arm and Flange	X	X	X	X	X	X	X	X
Decorative Rain Can Shower Head	X	X	X	X	X	X	X	X
Quick Connect Tub Spout					X	X	X	X
Solid Cast Brass Tub Spout					X	X	X	X
0X8 Valve; Pressure Balancing Valve Prevents Hot Water Scalds & Cold Water Shocks	X	X	X	X	X	X	X	X
Step-By-Step Installation Instructions	X	X	X	X	X	X	X	X
Pforever Warranty®	X	X	X	X	X	X	X	X

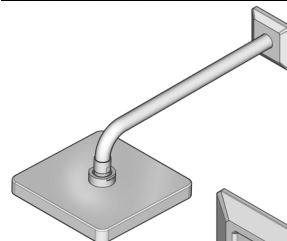
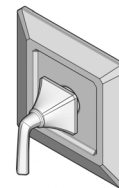


R89-7FEC

R89-7FED

R89-7FEK

R89-7FEY

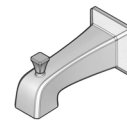
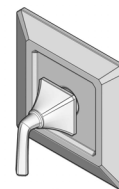


R89-8FEC

R89-8FED

R89-8FEK

R89-8FEY



For additional information, please contact your Price Pfister representative, or visit our website at www.pricepfister.com.

Project: _____

1-800-PFAUCET www.pricepfister.com
 19701 DaVinci, Lake Forest, CA 92610
 02/18/11

Contractor: _____



SS-R89-FE-1