

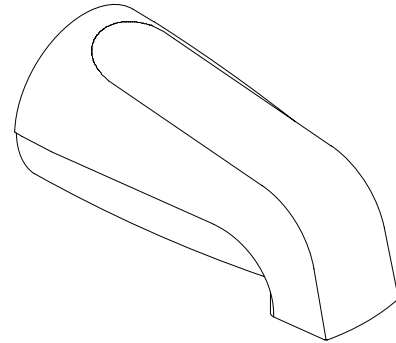
FEATURES

- *Metal construction*
- *Available with 4-5/8" non-diverter spout with N.P.T. or slip-fit connection*

CODES/STANDARDS APPLICABLE

Specified model meets or exceeds the following:

- *ASME/ANSI A112.18.1M*



COLORS/FINISHES

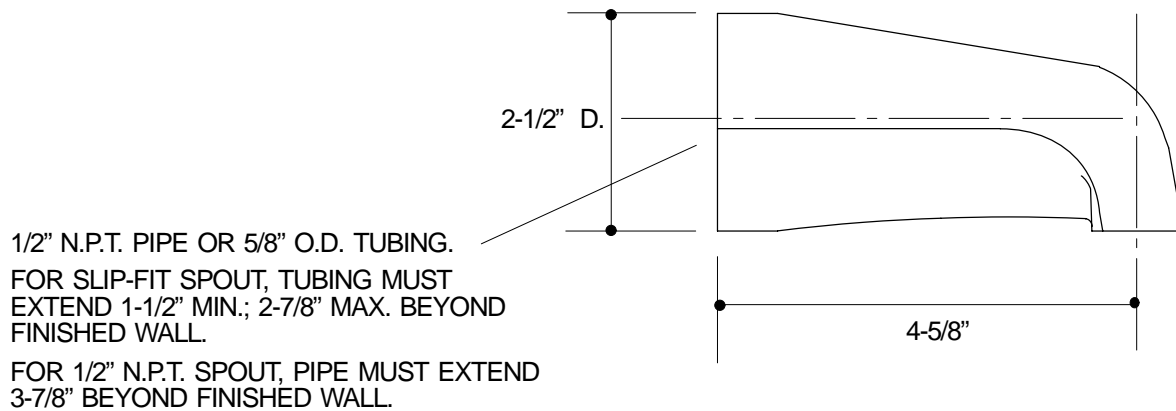
- CP Polished Chrome
- PB Polished Brass

SPECIFIED MODEL:

Model	Description		
K-15135	With N.P.T. Non-Diverter Bath Spout	<input type="checkbox"/> CP	<input type="checkbox"/> PB
K-15135-S	With Slip-Fit Non-Diverter Bath Spout	<input type="checkbox"/> CP	<input type="checkbox"/> PB

PRODUCT SPECIFICATION:

Product shall be a wall-mount 4-5/8" non-diverter bath spout and shall be of metal construction. Spout shall be available with N.P.T. or slip-fit connection. Spout shall be Kohler Model K-15135-_____-_____.



316

PRODUCT DIAGRAM