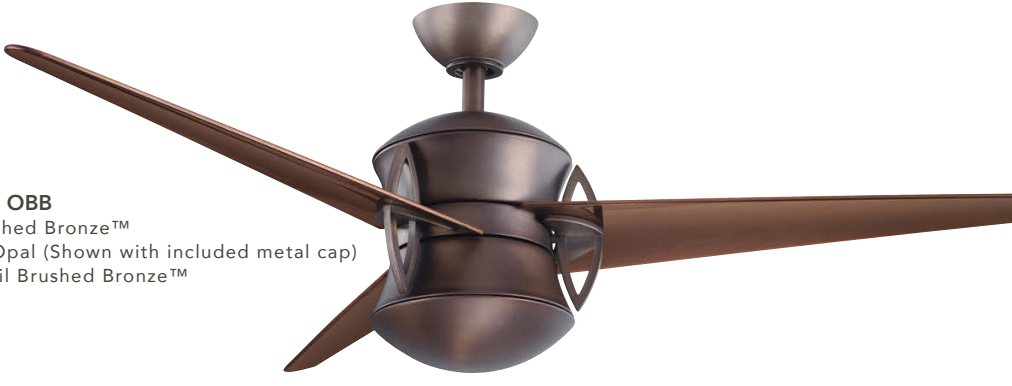




300125 MCH
Finish: Midnight Chrome
Glass: Cased Opal
Blades: Clear Black

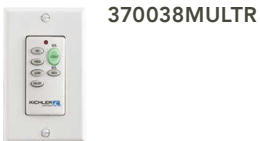


300125 OBB
Finish: Oil Brushed Bronze™
Glass: Cased Opal (Shown with included metal cap)
Blades: Clear Oil Brushed Bronze™



300125 BSS
Finish: Brushed Stainless Steel/Polished Nickel
Glass: Cased Opal
Blades: Clear Champagne

OPTIONAL CONTROLS



WALL TRANSMITTER – FULL FUNCTION

See page 321 for more information

INCLUDED CONTROL



3-SPEED COOLTOUCH™ FULL FUNCTION

- ★ 3 Forward Speeds & Reverse
- ★ Lights On/Off with Full Range Dimming
- ★ Motor Off



INCLUDED

- ★ **BLADES** (3) Included ★ 14° Pitch ★ 54" Sweep Non-Reversible ★ Polycarbonate
- ★ **DOWNRODS** 4" and 12" Downrods with 1" (O.D.)
- ★ **DOWNLIGHT** Integrated. Uses (1) E-11 75-W Halogen/JD Lamp
- ★ **DOWNLIGHT GLASS** Cased Opal
- ★ **OPTIONAL DOWNLIGHT** N/A
- ★ **UPLIGHT** N/A ★ **UPLIGHT GLASS** N/A
- ★ **LOW CEILING ADAPTABLE** No

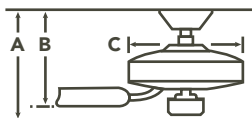
FAN SPECS

- ★ **MOUNTING SLOPE – PITCH** 22° or 4/12
- ★ **LEAD WIRE** 78" ★ **cUL LISTED** Indoor
- ★ **HANGING WEIGHT** 18.50 lbs.
- ★ **WARRANTY** Limited Lifetime

MOTOR SPECS

- ★ **MOTOR SIZE/ TYPE** 172mm x 17mm, AC
- ★ **AMPS** 0.55 on High ★ **RPM** 197 on High
- ★ **ENERGY STAR** N/A

HANGING MEASUREMENTS



WITH 4" DOWNROD
 A - 16.00" B - 10.25" C - 12.00"
 WITH 12" DOWNROD
 A - 22.00" B - 16.25" C - 12.00"

BLADE SPECS

Fan Finish	Blade Finish	Part No.
BSS Brushed Stainless Steel/Polished Nickel	Clear Champagne	FB300125BSS
MCH Midnight Chrome	Clear Black	FB300125MCH
OBB Oil Brushed Bronze™	Clear Oil Brushed Bronze™	FB300125OBB

METAL CAPS

Includes a metal fixture cap for non-light use



AIRFLOW 6387 Cubic Ft. Per Minute on High	POWER USAGE 65 Watts on High (Excludes Lights)	AIRFLOW EFFICIENCY 98 Cubic Ft. Per Minute Per Watt
--	---	--