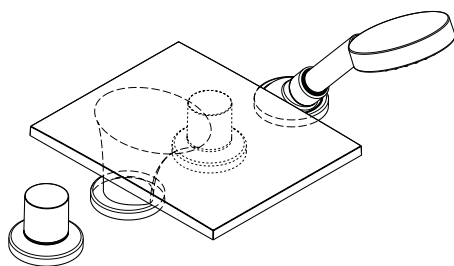


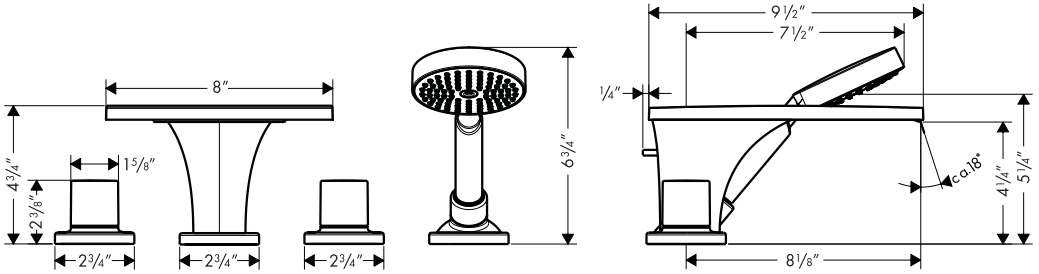
# Installation Instructions / Warranty



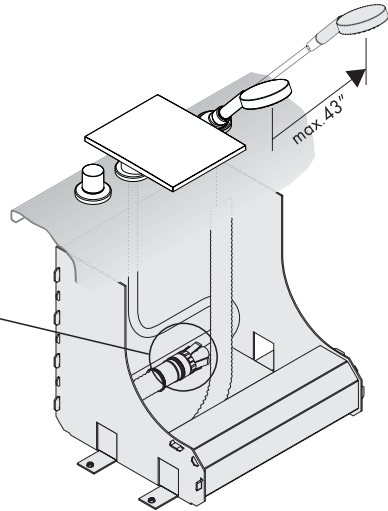
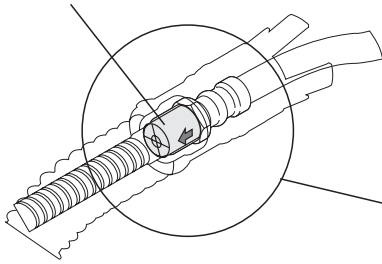
**Massaud**  
18440001

**hansgrohe**

# Axor Massaud Trim, 4-Hole Roman Tub Set 18440001



check valve



## Product Specification

Max. incoming water pressure	145 psi
Recommended water pressure	14.5 - 72 psi
Max. incoming hot water temp.	176°F*
Recommended hot water temp.	120°F - 140°F*
Max. flow rate at 44 psi	approx. 4.5 gpm
Max. flow rate of handshower	2.5 gpm

\*Know and follow all applicable local plumbing codes when setting the temperature on the water heater. In Massachusetts, the water heater may be set no higher than 112°F.

## Installation Considerations:

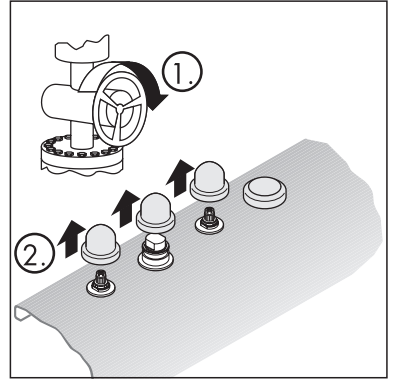
This trim kit is for use with rough valve 13444181. The rough must be installed and the mounting surface complete and sealed before installation of this trim kit.

Protection against back siphonage provided by check valve.

## Installation

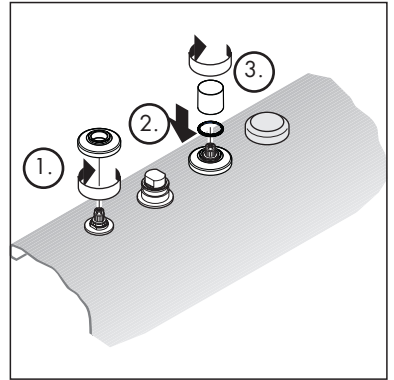
Turn the water off at the main (1).

Remove the plaster shields from the hot and cold valves and the diverter housing (2).



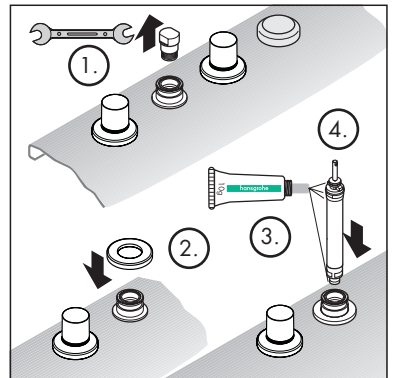
Install the escutcheons (1).

Install the color rings (2). Push the handles firmly over the escutcheons and color rings. Turn the handles clockwise so that the valves are in the off position (3).

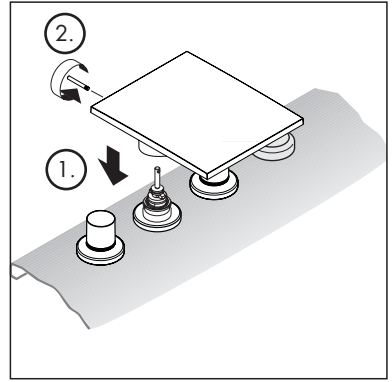


Remove the plug from the diverter housing (1). Install the spout escutcheon (2).

Put a light coating of the enclosed lubricant on the diverter o-rings (3). Press the diverter firmly into the housing (4).

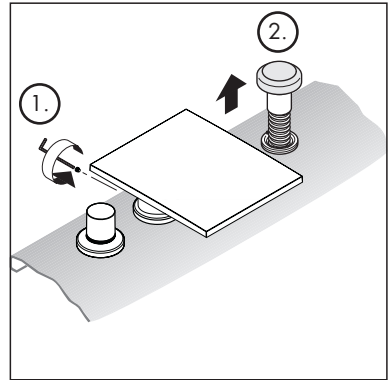


Push the spout firmly over the diverter (1). Install the diverter pull rod (2).

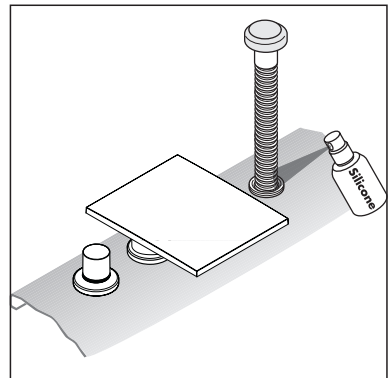


Tighten the spout set screw with the enclosed 3 mm Allen wrench (1).

Pull upward on the plaster shield, exposing the Secuflex hose (2).

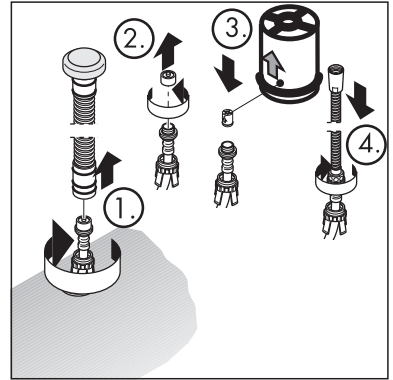


Spray the end of the Secuflex hose with silicon lubricant (included). This will make it easier to remove from the holder.

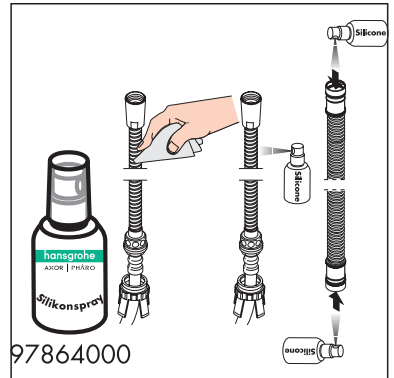


Pull the Secuflex hose completely out of the holder, to expose the high pressure hose. Separate the Secuflex hose from the high pressure hose by unscrewing the nut (1).

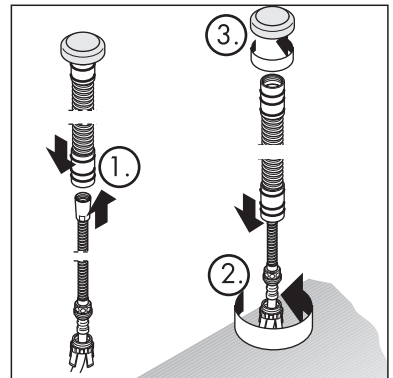
Remove the plug (2) from the high pressure hose. Install the check valve (3). The arrow should point in the direction of the water flow. Attach the handshower hose to the high pressure hose (4).



Lubricate the handshower hose and the ends of the Secuflex hose with the silicon lubricant.

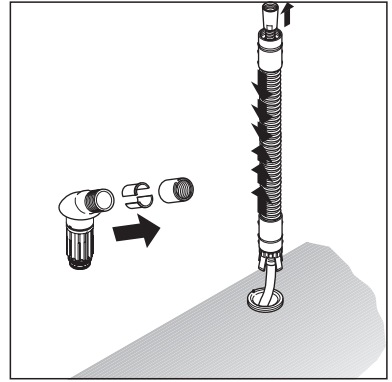


Push the handshower hose up through the Secuflex hose (1). Push the end of the Secuflex hose over the high pressure hose and tighten the nut (2). Remove the plaster shield (3).

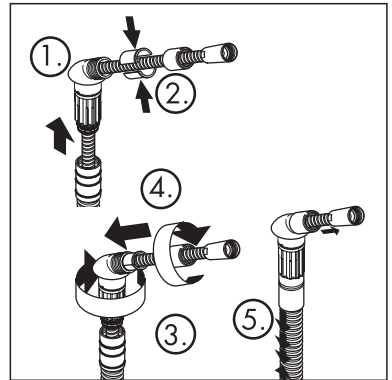


Unscrew the nut from the handshower holder. Remove the insert.

Compress the Secuflex hose so that the end of the handshower hose can be grasped.

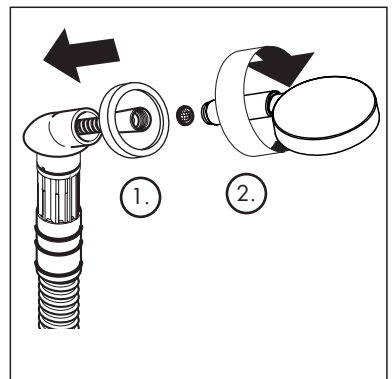


Push the handshower hose through the handshower holder (1). Snap the two halves of the insert around the hose (2). Push the nut over the end of the hose (3) and screw it back into place (4).



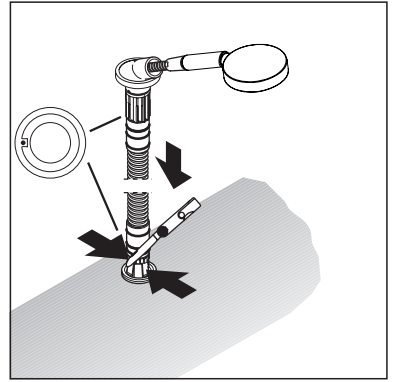
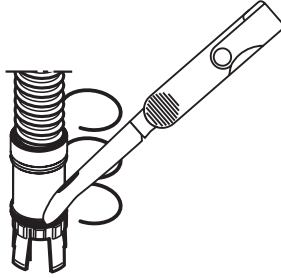
Push the handshower holder escutcheon over the hose and handshower holder (1).

Place the handshower screen washer into the hose end connector on the handshower hose. Install the handshower (2).



Cut the o-rings on the end of the Secuflex hose.

Push the handshower holder down into the Secuflex holder. The pin on the Secuflex holder should engage the hole in the bottom of the handshower holder.

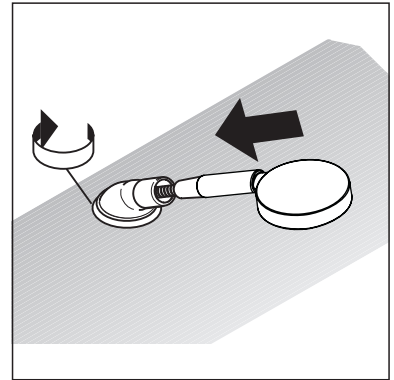


Secure the handshower holder by turning the escutcheon clockwise, so that it threads down onto the Secuflex holder.

Place the handshower in the holder.

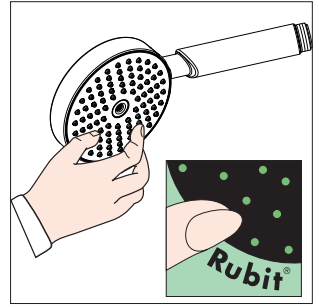
If the handshower becomes hard to pull out, spray a cloth with some of the silicon lubricant and wipe the handshower hose.

If the flow of water from the handshower diminishes over time, remove and clean the screen washer.

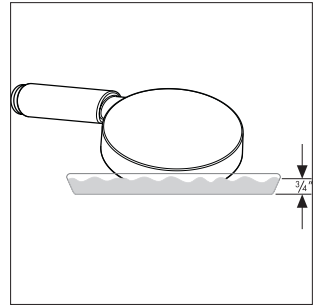


## Scale Removal

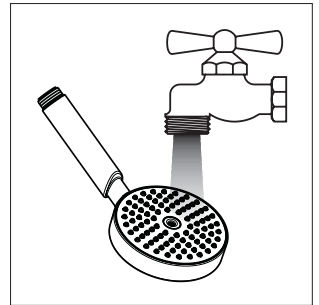
The handshower incorporates the Rubit™ self cleaning system. If scale deposits are noticed in the spray channels, turn the water on lightly and rub across the channels with a finger or a sponge to dislodge them.



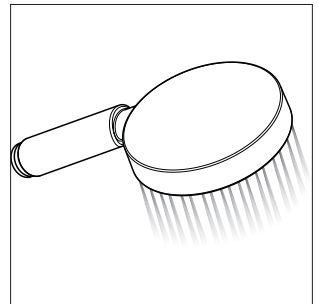
If scale deposits are noticed on the spray face, pour about 3/4" of a commercial scale remover, such as Lime-Away or CLR (diluted if directed) into a shallow dish. Soak just the spray face of the handshower in the cleaner.



Rinse the handshower with clear water.

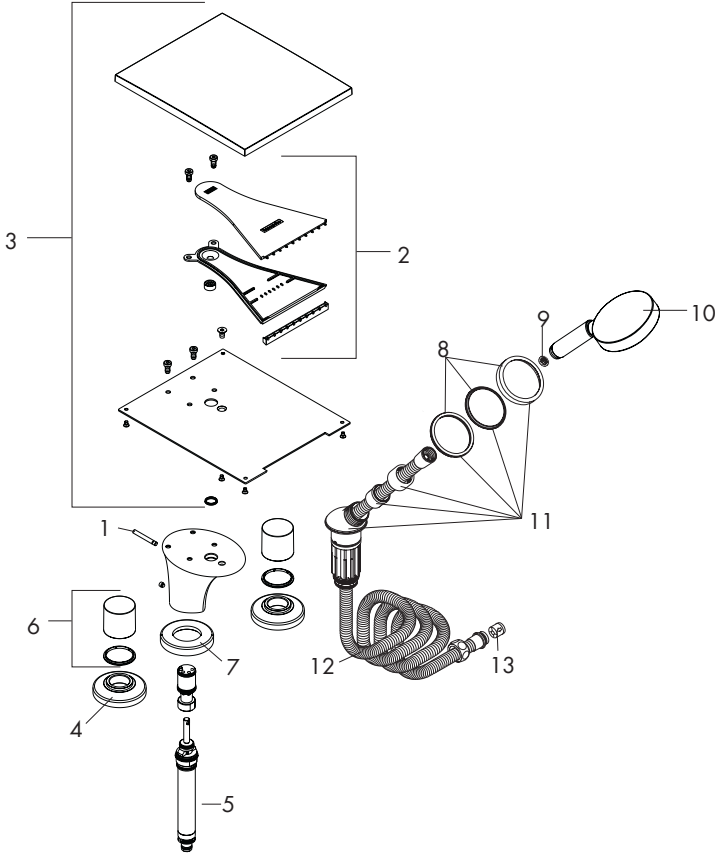


Reinstall the handshower and flush thoroughly with clear water.





# Replacement Parts



1	diverter knob	98707000
2	spray former	97448000
3	spout	98706000
4	handle escutcheon	98708000
5	diverter	96775000
6	handle	18098000
7	spout escutcheon	97779000
8	handshower holder escutcheon	94052000
9	screen washer	94246000
10	handshower	28509001
11	handshower holder	92380000
12	hose	94148000
13	check valve	94074000

# Cleaning Recommendation for Hansgrohe Products

Modern sanitary faucetry and shower fixtures consist of very different materials to comply with the needs of the market with regard to design and functionality.

To avoid damage and returns, it is necessary to consider certain points when cleaning:

## Cleaning materials for faucets and shower products:

Acids are necessary ingredients of cleaning materials for removing lime. However, please pay attention to the following points when cleaning faucets and shower products:

- Use only cleaning materials intended for the application.
- Never use cleaning materials which contain hydrochloric, formic, or phosphoric, or acetic acid, as these can cause considerable damage.
- Do not mix one cleaning material with another.
- Do not use abrasives, such as cleaning powders, sponge pads, or microfiber cloths.

## Cleaning Instructions for Faucets and Shower Products:

Please follow the cleaning material manufacturer's instructions. In addition, please note the following:

- Clean your faucets and shower products as and when required.
- Follow the label instructions. Do not allow any cleaner to remain on the product for longer than necessary.
- Regular cleaning will prevent scale buildup and water spotting.
- When using spray cleaners, spray first onto a sponge or cloth. Do not spray directly onto the faucet or shower product as drops could enter openings or gaps and cause damage.
- After cleaning, rinse thoroughly with clear water to remove any cleaner residue.

## Important

Residues of liquid soaps, shampoos, and shower foams can also cause damage, so rinse with clean water after using.

## Please note:

- If the surface is already damaged, the effect of cleaning materials will cause further damage.
- Components with damaged surfaces must be replaced, otherwise, this could cause injury.
- Damage caused by improper treatment will not be covered by our warranty.

## Limited Lifetime Consumer Warranty

This product has been manufactured and tested to the highest quality standards by Hansgrohe, Inc. ("Hansgrohe"). This warranty is limited to Hansgrohe products which are purchased by a consumer in the United States after March 1, 1996, and installed in either the United States or Canada.

### WHO IS COVERED BY THE WARRANTY

This warranty extends to the original consumer purchaser only. This warranty is non-transferable.

### WHAT IS COVERED BY THE WARRANTY

This warranty covers only your Hansgrohe manufactured product. Hansgrohe warrants this product against defects in material or workmanship as follows: Hansgrohe will repair at no charge for parts only or, at its option, replace any product or part of the product that proves defective because of improper workmanship and/or material, under normal installation, use, service and maintenance. If Hansgrohe is unable to provide a replacement and repair is not practical or cannot be timely made, Hansgrohe may elect to refund the purchase price in exchange for the return of the product.

### LENGTH OF WARRANTY

Replacement or repaired parts of products will be covered for the term of this warranty as stated in the following two sentences. If you are a consumer who purchased the product for use primarily for personal, family, or household purposes, this warranty extends for as long as you own the product and the home in which the product is originally installed. If you purchased the product for use primarily for any other purpose, including, without limitation, a commercial purpose, this warranty extends only (i) for 1 year, with respect to Hansgrohe and Commercial products,

and (ii) for 5 years, with respect to AXOR products.

THIS WARRANTY DOES NOT COVER, AND HANSGROHE WILL NOT PAY FOR:

- A. Conditions, malfunctions or damage not resulting from defects in material or workmanship.
- B. Conditions, malfunctions or damage resulting from (1) normal wear and tear, improper installation, improper maintenance, misuse, abuse, negligence, accident or alteration, or (2) the use of abrasive or caustic cleaning agents or “no-rinse” cleaning products, or the use of the product in any manner contrary to the product instructions. (3) Conditions in the home such as excessive water pressure or corrosion.
- C. Labor or other expenses for the disconnection, deinstallation, or return of the product for warranty service, or for installation or reinstallation of the product (including but not limited to proper packaging and shipping costs), or for installation or reinstallation of the product.
- D. Accessories, connected materials and products, or related products not manufactured by Hansgrohe.

TO OBTAIN WARRANTY PARTS OR INFORMATION

Contact your Hansgrohe retailer, or contact Technical Service at:

Hansgrohe Inc.  
1492 Bluegrass Lakes Parkway  
Alpharetta GA 30004  
Toll-free (800) 334-0455.

In requesting warranty service, you will need to provide

- 1. The sales receipt or other evidence of the date and place of purchase.
- 2. A description of the problem.
- 3. Delivery of the product or the defective part, postage prepaid and carefully packed and insured, to Hansgrohe Inc. 1492 Bluegrass Lakes Parkway, Alpharetta, Georgia 30004, Attention: Technical Service, if required by Hansgrohe.

When warranty service is completed, any repaired or replacement product or part will be returned to you postage prepaid.

EXCLUSIONS AND LIMITATIONS

REPAIR OR REPLACEMENT (OR, IN LIMITED CIRCUMSTANCES, REFUND OF THE PURCHASE PRICE) AS PROVIDED UNDER THIS WARRANTY IS THE EXCLUSIVE REMEDY OF THE PURCHASER. HANSGROHE NEITHER ASSUMES NOR AUTHORIZES ANY PERSON TO CREATE FOR IT ANY OBLIGATION OR LIABILITY IN CONNECTION WITH THIS PRODUCT.

HANSGROHE SHALL NOT BE LIABLE TO PURCHASER OR ANY PERSON FOR ANY INCIDENTAL, SPECIAL, OR CONSEQUENTIAL DAMAGES, ARISING OUT OF BREACH OF THIS WARRANTY OR ANY IMPLIED WARRANTY (INCLUDING MERCHANTABILITY).

Some States do not allow the exclusion or limitation of incidental or consequential damages, so the above limitation or exclusion may not apply to you. This warranty gives you specific legal rights, and you may have other rights which vary from State to State. You may be required by law to give us a reasonable opportunity to correct or cure any failure to comply before you can bring any action in court against us under the Magnuson-Moss Warranty Act.

PRODUCT INSTRUCTIONS AND QUESTIONS

Upon purchase or prior to installation, please carefully inspect your Hansgrohe product for any damage or visible defect. Prior to installing, always carefully study the enclosed instructions on the proper installation and the care and maintenance of the product. If you have questions at any time about the use, installation, or performance of your Hansgrohe product, or this warranty, please call or write to us or call us toll-free at 800 334 0455.

**hansgrohe**

Hansgrohe, Inc. • 1490 Bluegrass Lakes Parkway • Alpharetta, GA 30004  
Tel. 770 360-9880 • Fax 770 360 9887

**[www.hansgrohe-USA.com](http://www.hansgrohe-USA.com)**