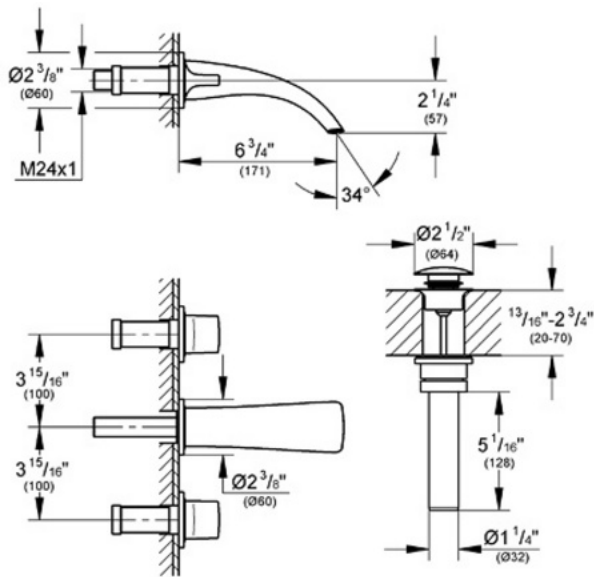


31 049 Wall Mount Vessel Faucet Trim



Description

-AVAILABLE ONLY THROUGH AUTHORIZED GROHE ONDUS SHOWROOMS-
 GROHE Ondus two-handle control
 GROHE Ondus ribbon flow
 GROHE SilkMove® ceramic cartridges
 6 3/4" spout reach
 One-touch, spring action pop-up drain
 3-hole installation
 Wall installation
 Requires rough-in valve 29 031



Flow Rate

Maximum 1.6 gpm water flow rate

Code Compliance

ASME/ANSI A112.18.1M

Finish Options

31 049 OOO Starlight® Chrome
 31 049 KS0 Velvet Black
 31 049 LS0 Moon White
 31 049 BS0 Titanium