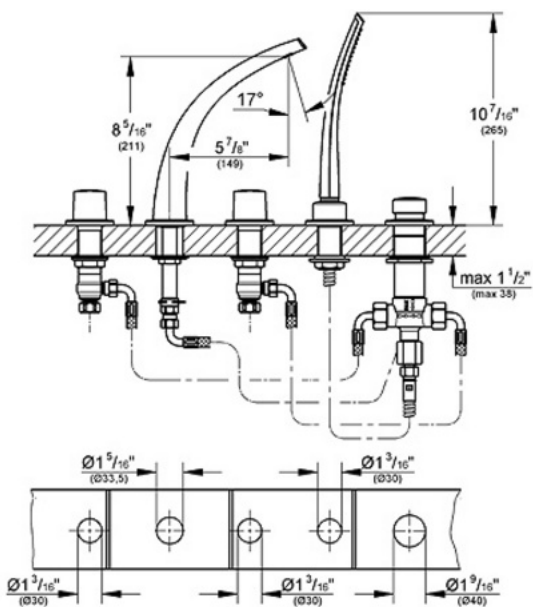


31 053 Roman tub filler with hand shower



Description

-AVAILABLE ONLY THROUGH AUTHORIZED GROHE ONDUS SHOWROOMS-
 GROHE Ondus two-handle control
 GROHE Ondus ribbon flow
 Ceramic cartridges
 GROHE Ondus hand shower 27 185
 Diverter to/from spout to hand shower
 5-hole installation
 Tub installation
 79" metal shower hose



Flow Rate

Maximum 5.3 gpm

Code Compliance

ASME/ANSI A112.18.1M

Finish Options

- 31 053 OOO Starlight® Chrome
- 31 053 KS0 Velvet Black
- 31 053 LS0 Moon White
- 31 053 BS0 Titanium