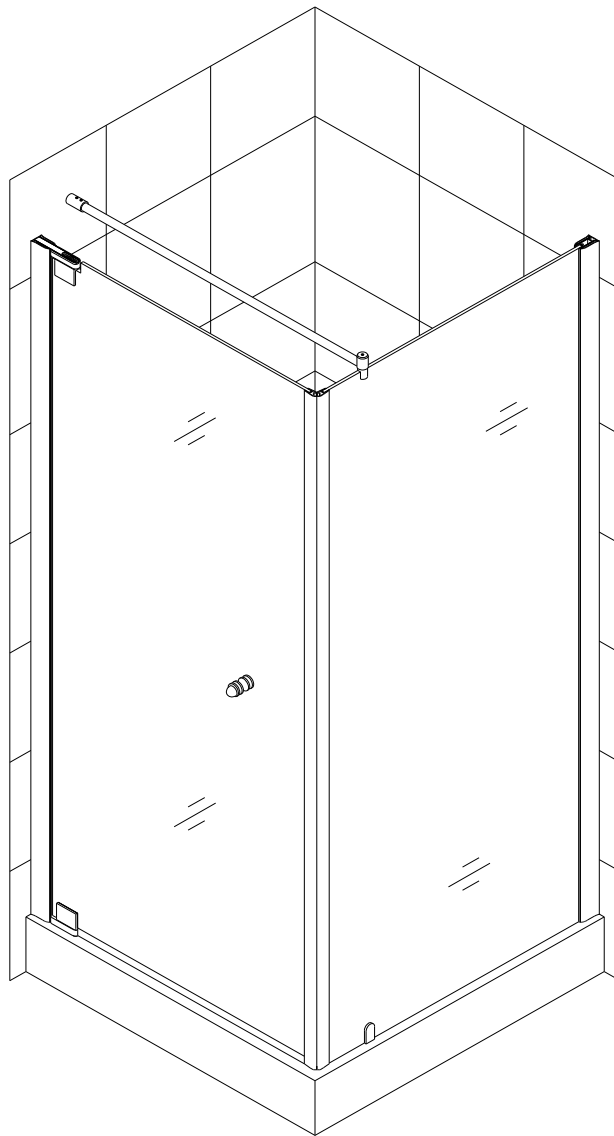




TETRA Shower Enclosure Installation Manual

Important

Please read carefully the following instructions before installing your shower door. If you have any questions on this shower enclosure installation, please call our technical support specialists Monday to Friday 9:00AM – 5:00PM EST at 1-866-731-8378 Option 3 or e-mail our technical support group at support@BathAuthority.com

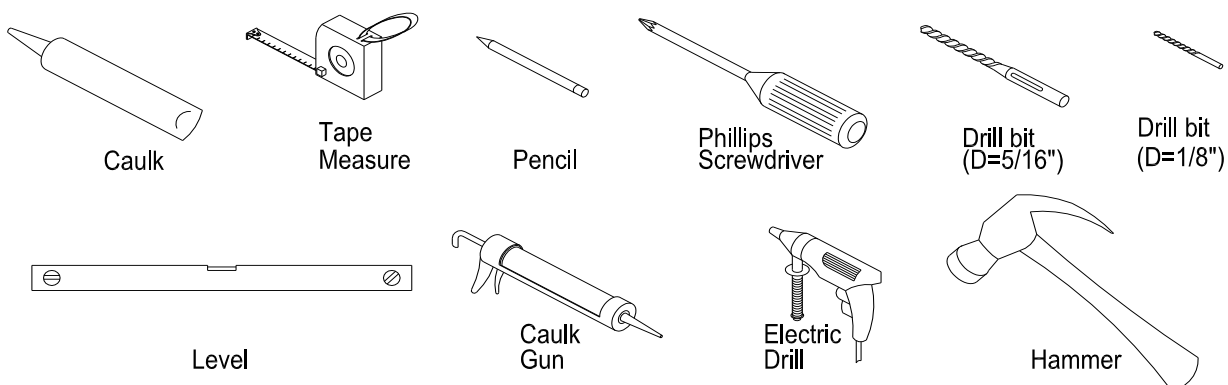


Our product may have changes without prior notice

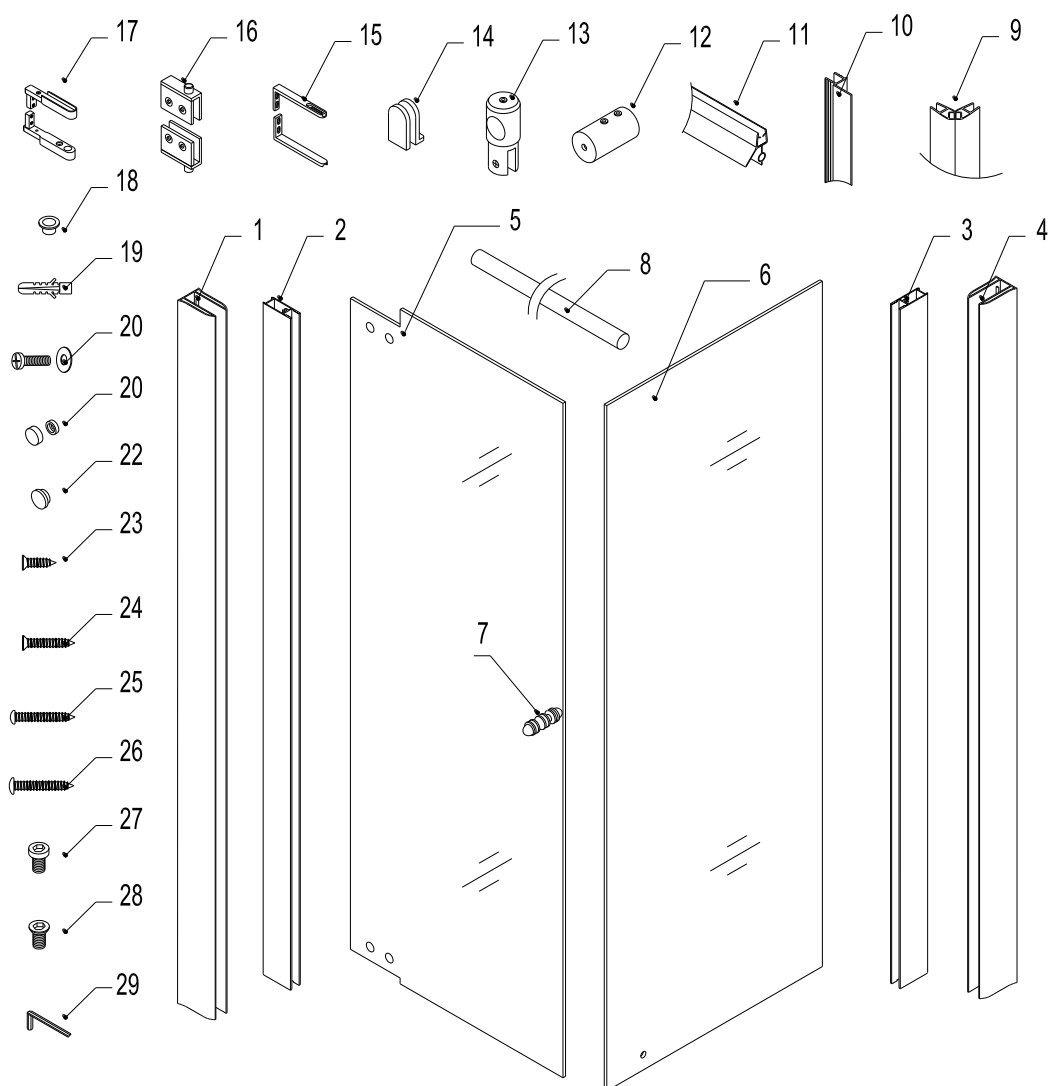
Preparation

1. After opening the boxes, read this introduction carefully, check all the packed parts are complete by cross checking all the components against the “Detailed Diagram of Shower Door Components”. Examine for shipping damage. If the unit has been damaged or has a finishing defect, please contact your local distributor within 3 business days. Please note that **Bath Authority™ / DreamLine™ will not replace any damaged product or parts free of charge after 3 business days or if the product has been installed.** Contact your distributor or DreamLine if you have any questions.
2. **Please note that you should consult your local building codes on questions on installation compliance standards. Building and plumbing codes vary by location, and DreamLine is not responsible for code compliance standards for your project.**
3. Install all of the required plumbing and drainage before securing the shower. **Use a competent and licensed (if required by local code) plumber for all plumbing installation.**
4. Please insure that prior to the installation the floor is leveled and solid and will be able to support the total weight of the unit and its occupant. Also make sure the walls are at right angles. While some adjustment in leveling of the tray is possible, irregular floor level or improper angle of side walls will result in serious problems for your installation. Please, note that there are some adjustments and drilling might be necessary during the installation process.
5. For the shower tray installation, please refer to our ***Shower Tray Installation Manual***. Once the tray is installed and the interior wall is finished, then you can start the installation of your shower enclosure.

Tools Required



Detailed Diagrams of Shower Enclosure Components



Packing List

01	Wall profile 1	1pc	16	Pivot assembly (top and bottom)	1pair
02	Glass profile 1	1pc	17	Pivot bracket	2pcs
03	Glass profile 2	1pc	18	Washer	2pcs
04	Wall profile 2	1pc	19	Wall Anchor	13pcs
05	Glass door	1pc	20	Screw M4x16 with washer	4pcs
06	Return glass	1pc	21	Decorative cover	1pc
07	Handle	1pc	22	Decorative Plug	6pcs
08	Top bar	1pc	23	Countersunk screw ST4.2x16	6pcs
09	Magnetic strip	1pair	24	Countersunk screw ST4.2x25	3pcs
10	Anti-water strip	1pc	25	Round head screw ST4.2x25	1pc
11	Bottom anti-water strip	1pc	26	Round head screw ST4.2x30	13pcs
12	Support Bar Wall bracket	1pc	27	Hex socket round head bolt M6x12	1pc
13	Support Bar Glass bracket	1pc	28	Hex socket flat head bolt M6x12	1pc
14	Bottom bracket	1pc	29	Allen key 4mm, 5mm each	1 set
15	Pivot retainer	2pcs	30		

After you have checked that all components are there, you will be ready to start the installation of your DreamLine shower enclosure.

Installation

1. Locate the **Wall profile 1 (01)** in the package. Refer to dimensions in fig. 1 to locate the proper position for it according to the measurement. Outline the external position of the wall profile. Use predrilled holes in the aluminum profile to mark holes for drilling. Drill the holes using drill bit 5/16" and push the **Wall Anchors (19)** into the holes.
2. Run a bead of silicone along the wall profile length. Push the **Pivot retainer (15)** into the top and bottom sides of the **Wall profile 1**. Place the **Wall Profile 1** onto the threshold against the marked line. Secure the **Wall Profile 1** and the **Pivot retainers (15)** at the top and bottom ends of the profile with **Screws ST4.2x30 (26)**. See Fig. 1 for details.
3. Repeat Step 1 to attach the **Wall profile 2 (04)** to the wall (this wall profile will have no pre-cut seat for pivot retainers). Doesn't require pivot retainers. See Fig. 2 for details.
4. Locate the short **Glass profile 1 (2)**. Push the upper **Pivot bracket (17)** into the top groove of the **Glass profile**; then secure it to the profile with **Countersunk screws ST4.2x25 (24)** and **M4x16 bolt (20)**. Repeat the same steps for the bottom pivot bracket. See Fig 3 for details.
5. Attach the bottom **Pivot assembly (16)** onto the **Pivot bracket (17)**. Make sure that the **Washer (18)** is in between the pivot assembly and the pivot bracket. The washer may already be placed on the pivot assembly pin or inside the pivot bracket. Repeat the same for the top pivot assembly. The pivot assembly and the pivot bracket edges should be aligned. The bolt side should face inward. Remove the back fastener from the pivot assembly. Set the **Glass door (05)** so the holes are aligned. Make sure the rubber gaskets are in between the glass and the metal parts. Secure the glass with the back fastener using the provided bolts. See fig. 4 for details.
6. Mount the **Handle (07)** on the glass door. See fig. 5 for details.
7. Push the assembled glass door into the groove of the **Wall profile 1**. Secure the **Upper pivot bracket (17)** and the **Upper pivot retainer (15)** with **Hex Socket round head bolt M6x12 (27)**. See Fig. 6, 7 for details.
8. Apply silicone along the full length of the **Glass profile 2 (03)** channel and then push the **Return glass (06)** into the channel. (Note that the hole in the return glass should be located at the bottom and close to the glass door). Gently tap on the **Glass profile 2 (03)** with the rubber hammer through the wooden block so the **Return glass** slides inside the **Glass profile 2**. See fig. 8 for details.
9. Push the **Magnetic strips (9)** on the edges of the return glass and the swing door, the **Anti-water strip (10)** – inside the glass profile channel and the **Bottom anti-water strip (11)** on the bottom of the door. Make sure the glass door is leveled and plumbed and then tighten up the **Hex socket round head bolt M6x12 (27)**. See Fig. 9 for details.
10. Adjust the positions of the glass door and the return glass to ensure that the door is closing tightly. Drill the holes at the top, middle and bottom in the wall profile 1, and secure it to the glass profile 1 with **Countersunk screws ST4.2x16 (23)** and cover the exposed screw heads with **Decorative plugs (22)**. See Fig. 10 for details.
11. Repeat Step 10 to attach the **Wall profile 2** to glass profile 2. See Fig. 11 for details.
12. Place the **Hex socket flat head bolt M6x12 (28)** to the bottom **Pivot bracket (17)** or you can drill through the screw hole, apply silicone and secure it using **Countersunk screw M4.2 x25 (24)**. See Fig. 12 for details.
13. Attach the **Bottom bracket (15)** on the stationary glass and drill through the slotted hole of the bracket. Screw the bracket to the threshold with the **Round head screw ST4.2x25 (25)** and cover it with the **Decorative cover (21)**. See fig. 13 for details.
14. Find the **Support bar (08)** and attach the **Support bar wall bracket (12)** and **Support bar glass bracket (13)** to the support bar. Loosen the glass holding set-screw on the **Glass**

bracket and place the bracket on the **Return glass** at a proper position. Adjust the position of the wall bracket on the wall to ensure that the bar is leveled and parallel to the **Glass door**. When the bar is aligned in place, outline the position for the **Wall bracket**. Remove the **Wall bracket**, mark the screw hole and drill it, insert the **Wall anchor (19)**. Attach the **Wall bracket** to the wall with the **Screw ST4.2×30 (26)**. Insert the end of the support bar into the **Wall bracket** and attach the other end to the **Glass bracket**. Tighten up the set-screw on the glass bracket. (**Do not forget to put the plastic gasket between the glass and metal.**) Gently push the return glass from outside and check if the door is closing tightly and then tighten up the holding set-screws on the **Wall bracket**. See fig. 14 for details.

15. Seal with silicone between the shower tray and the stationary glass, between the wall and the wall profiles. See fig. 15 for details.

If you want your shower enclosure to be installed in a different configuration, you can simply switch the positions of wall profile 1 and wall profile 2.

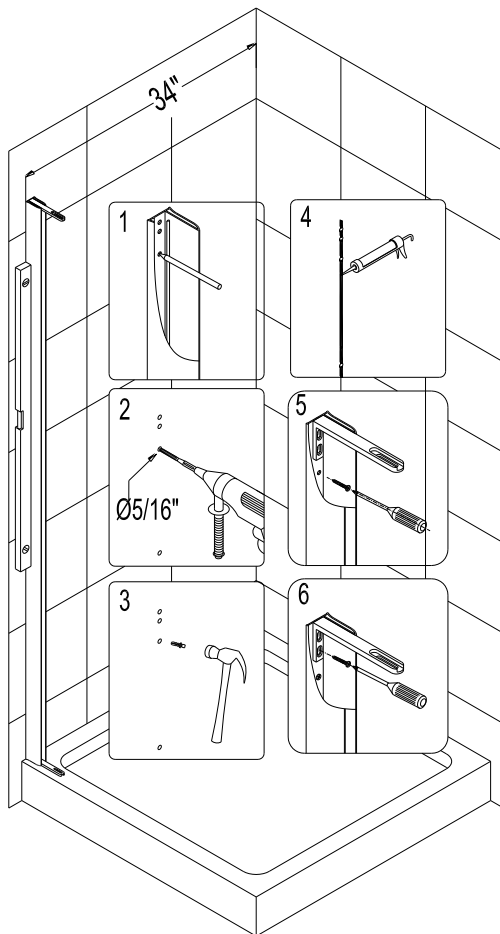


Fig. 1

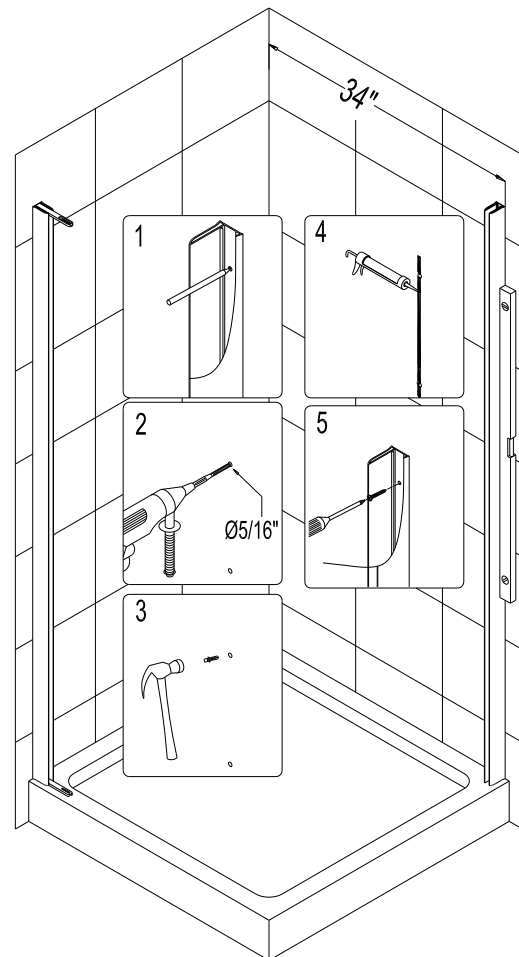


Fig. 2

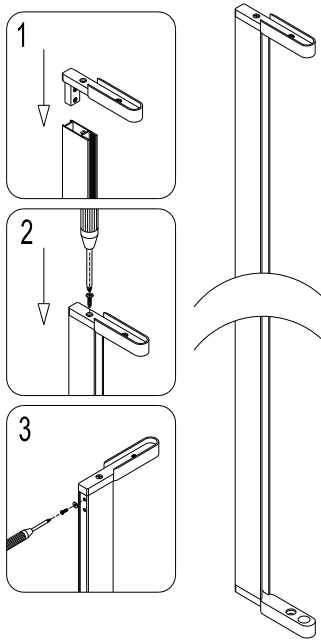


Fig. 3

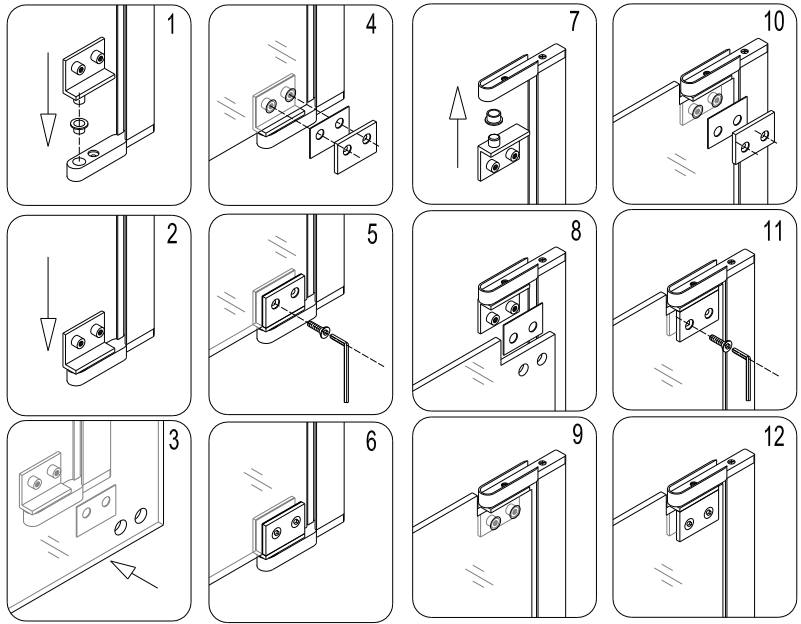


Fig. 4

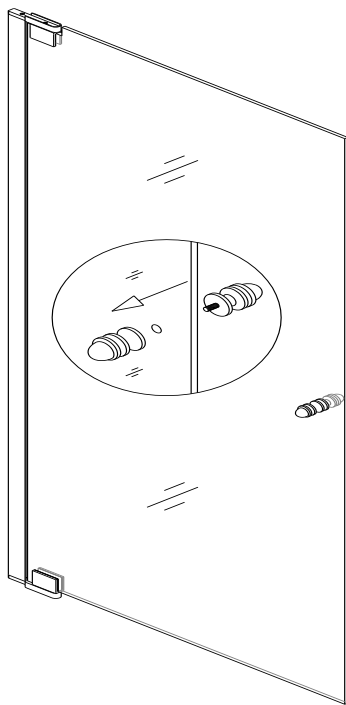


Fig. 5

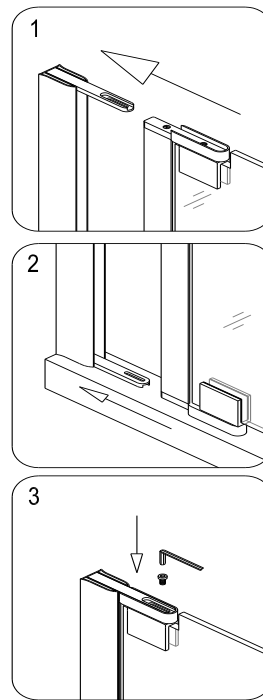


Fig. 6

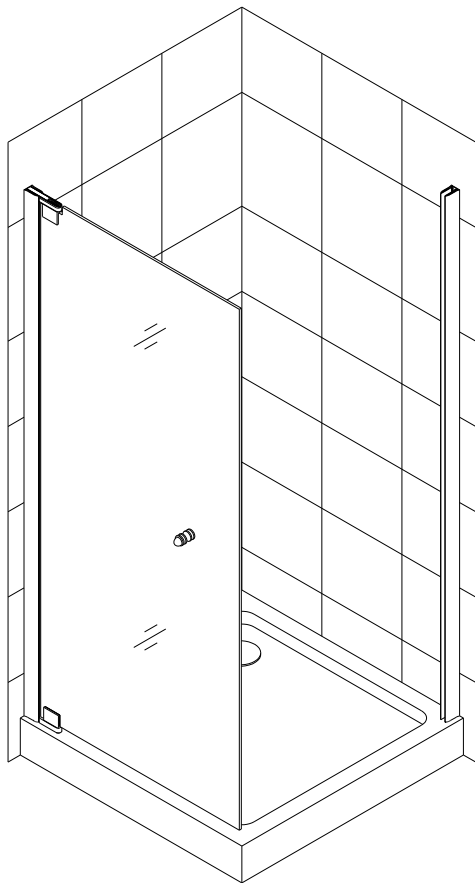


Fig. 7

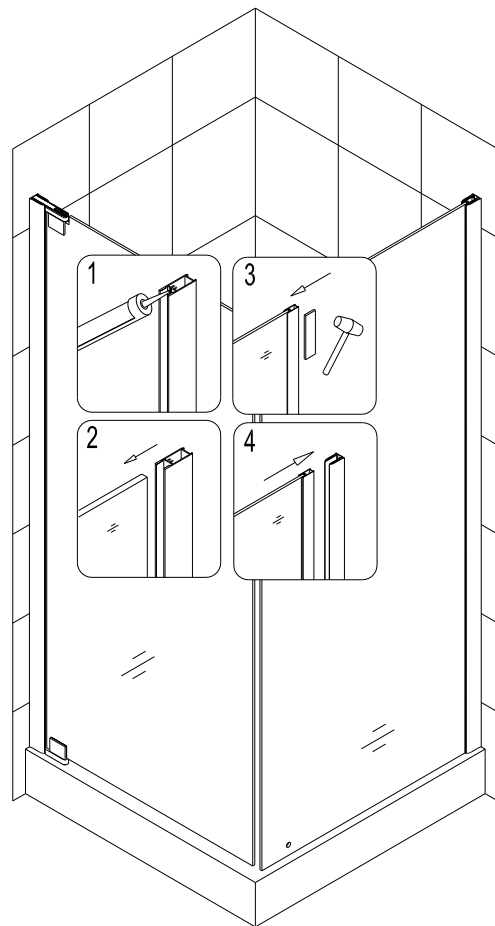


Fig. 8

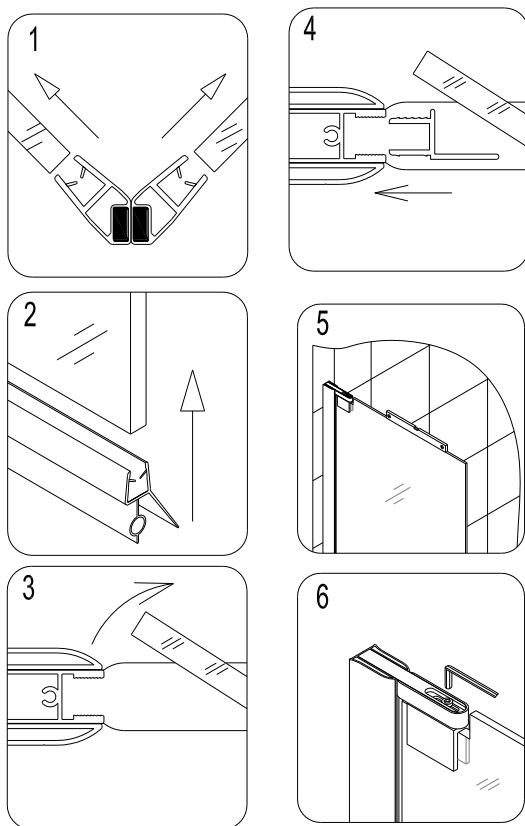


Fig. 9

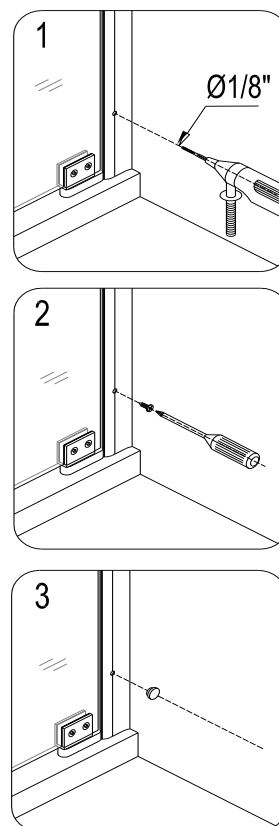


Fig. 10

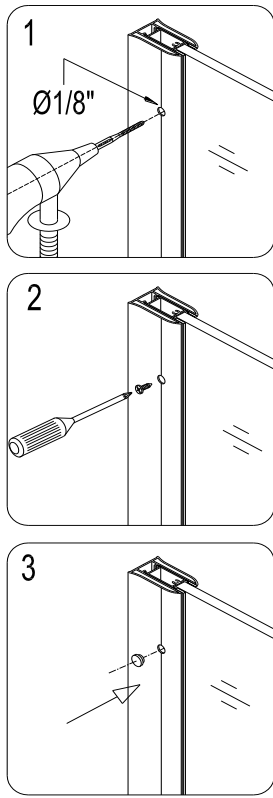


Fig. 11

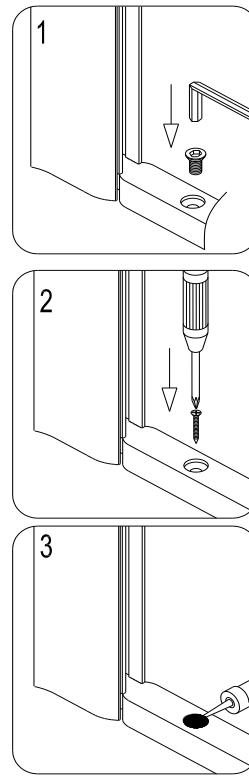


Fig. 12

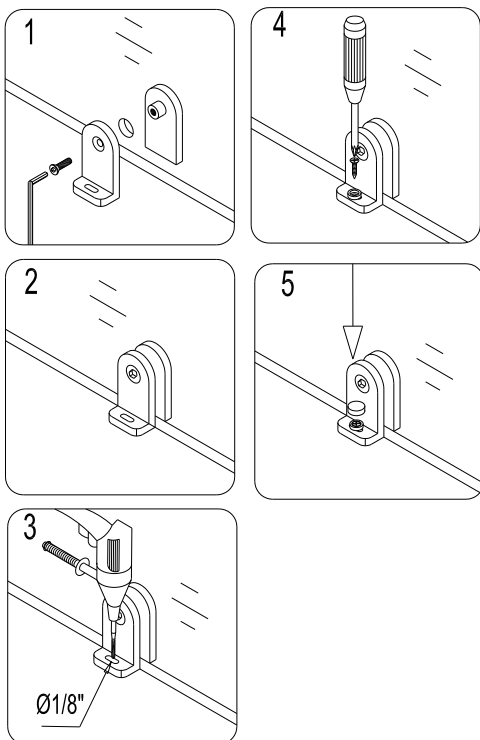


Fig. 13

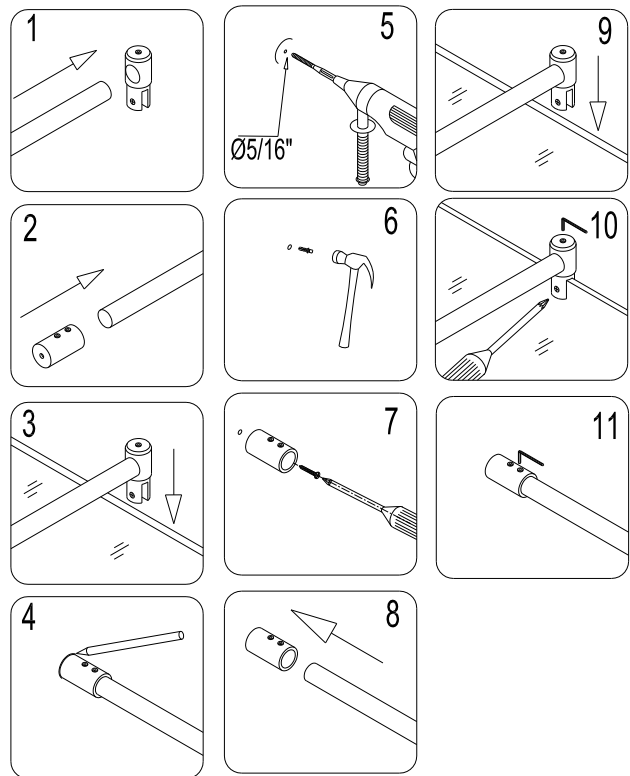


Fig. 14

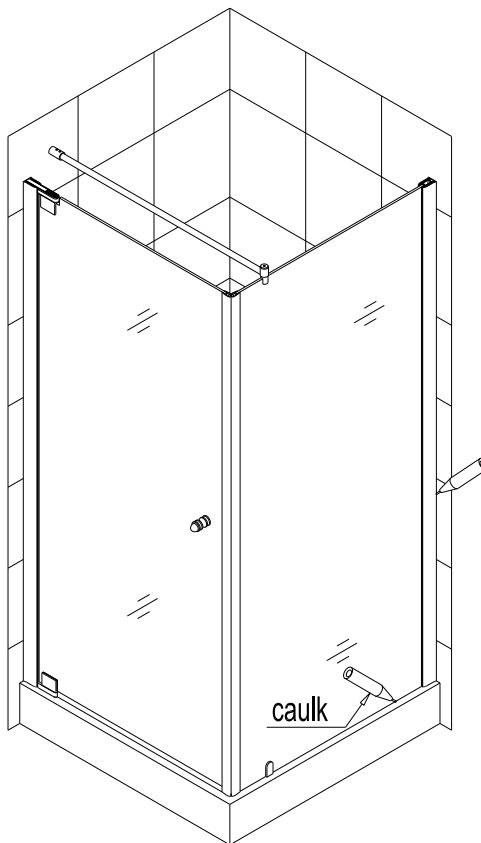


Fig. 15

Maintenance

1. Tempered glass can be clean with nonabrasive bathroom cleaner or any glass cleaner you use elsewhere in your home. Rinse off any glass cleaner that gets on the aluminum as soon as possible to avoid damage to the anodized surface. Avoid striking it with any sharp or hard objects. Such damage can cause either immediate or delayed breakage of tempered glass.
2. The aluminum in your shower door is durable and resistant to water damage. It is advisable, but not necessary to wipe it with your towel after your shower. Clean it as often as needed to keep the buildup off. Never use any type of abrasive cleaner. Use only a soft damp cloth and nonabrasive bathroom cleaners.