

Richland Tri-View Lighted Medicine Cabinet

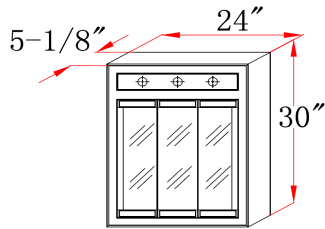


Specifications

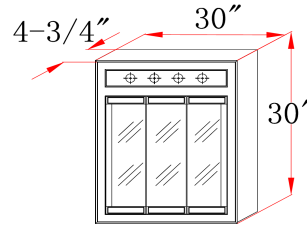
- Nutmeg Oak Finish
- Concealed hinges
- Pre-assembled design
- 3 Doors
- 2 Shelves
- Solid Oak Frame
- Durable water resistant finish
- Light bulbs not included



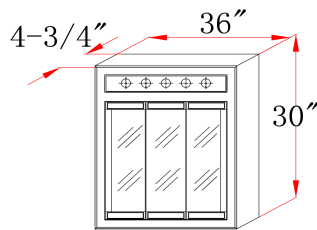
Dimensions



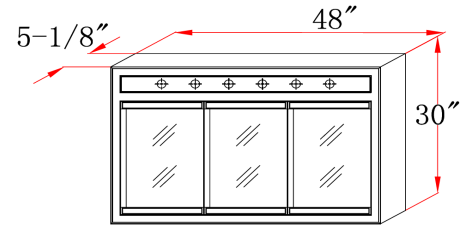
530592



530600



530618



530626

Warranty & Compliances

Warranty Limited 1 year warranty
California 93120 Compliant



Order Codes & Finishes/Colors

24" w x 5" d x 30" h	Uses three 60-Watt, medium base bulbs	530592
30" w x 5" d x 30" h	Uses four 60-Watt, medium base bulbs	530600
36" w x 5" d x 30" h	Uses five 60-Watt, medium base bulbs	530618
48" w x 5" d x 30" h	Uses six 60-Watt, medium base bulbs	530626

Type:
 Job:
 Order Code:
 Approvals:

Design House reserves the right to make changes in materials, specifications & models at any time. Design House also reserves the right to discontinue product without notice or obligation.