

Claremont Two Door Vanity

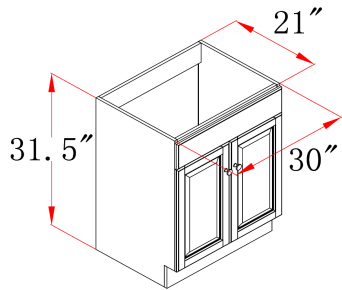


Specifications

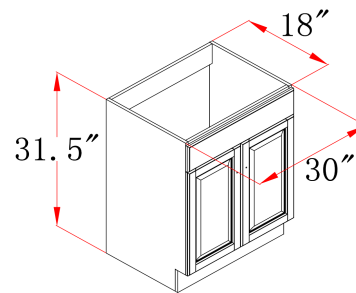
- Solid wood door frames and drawer fronts
- Raised panel veneer, full overlay door design
- Frameless design for increased storage and accessibility
- Aged brass hardware
- Concealed, adjustable hinges
- Cam-lock connectors for fast & easy assembly
- Vanity top sold separately



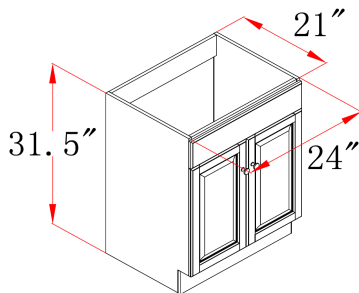
Dimensions



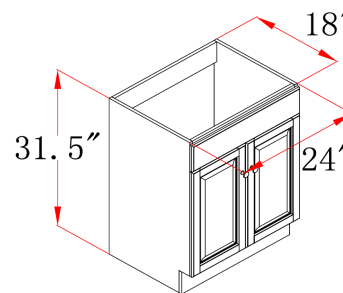
533471



531996



533190



531988

Warranty & Compliances

Warranty Limited 1 year warranty
California 93120 Compliant



Order Codes & Finishes/Colors

30" w x 21" d x 31.5" h	533471
30" w x 18" d x 31.5" h	531996
24" w x 21" d x 31.5" h	533190
24" w x 18" d x 31.5" h	531988

Type:
Job:
Order Code:
Approvals:

Design House reserves the right to make changes in materials, specifications & models at any time. Design House also reserves the right to discontinue product without notice or obligation.