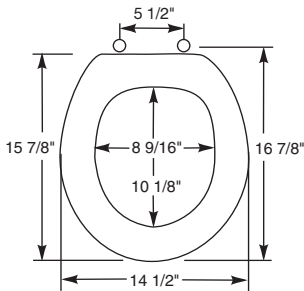




C O M M E R C I A L P L A S T I C S E A T S

MODEL 3BT

- ROUND SEAT, CLOSED FRONT WITH COVER
- HEAVY DUTY PLASTIC
- 300 SERIES STAINLESS STEEL HINGE AND BOLT
- STA-TITE®, COMMERCIAL FASTENING SYSTEM™

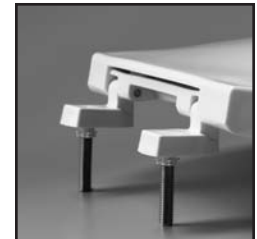


Seats shall be No. 3BT as manufactured by Church Seats. Seats shall be commercial weight and injection molded of solid plastic. Seats shall be closed front with cover for round bowl and feature large molded-in bumpers. Seats shall have STA-TITE®, Commercial Fastening System™, featuring 300 Series stainless steel posts and pintles. Color to be white.

Ring thickness is 1/2"
 Ring thickness including the bumper is 13/16"
 Height of the seat with cover is 1-7/8"

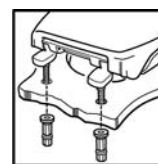


STA-TITE®, COMMERCIAL FASTENING SYSTEM™, ONE-PIECE INTEGRATED NUT AND WASHER

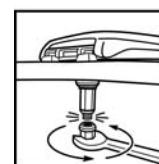


EXTERNAL CHECK HINGE WITH 300 SERIES STAINLESS STEEL BOLTS

STATITE®



Finger-tighten fastening nuts.



Using wrench, tighten until lower portion shears off.